

# White Bay Power Station Visual Story

## About this Guide

This guide explains what to expect when visiting White Bay Power Station.

It includes information about how to get there, what the space is like and where to find support.

The Site .....	2
Before Arriving.....	3
Arriving at the Site .....	8
Entering the Building .....	13
Lower Level Environment.....	17
Amenities.....	20
Food and Drink .....	24
Vertical Access and Lift .....	25
Boiler House Upper Level Environment.....	27
Turbine Hall Upper Level Environment.....	29

# The Site



The White Bay Power Station is a large-scale industrial site.

It is now used for art exhibitions and events.

The building was not originally designed for public use.

Some parts of the environment may affect how people move, hear, and see information.

# Before Arriving

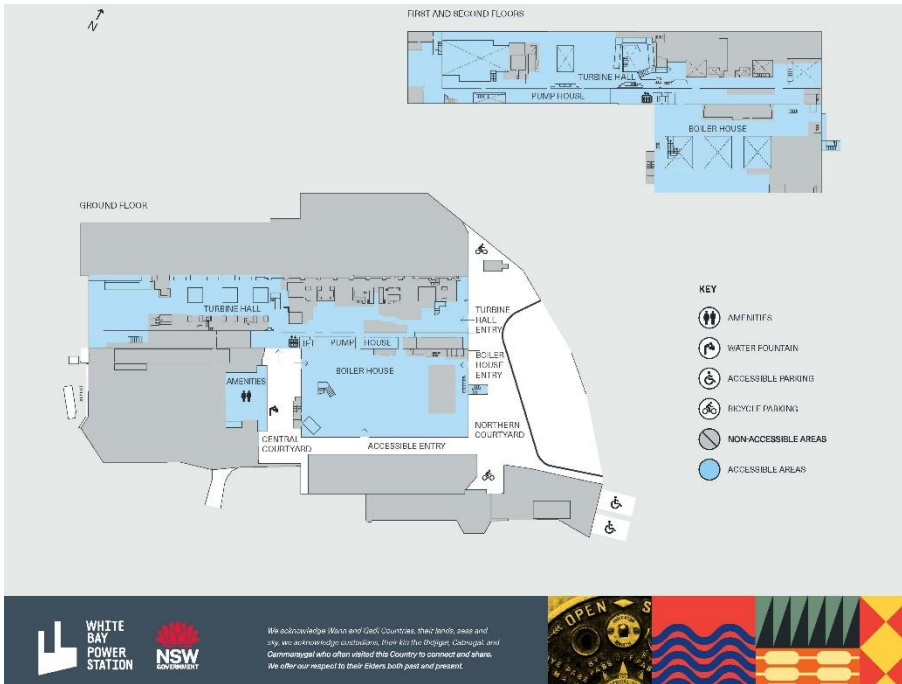
## Maps and Navigation

You can explore the site before your visit using different types of maps.



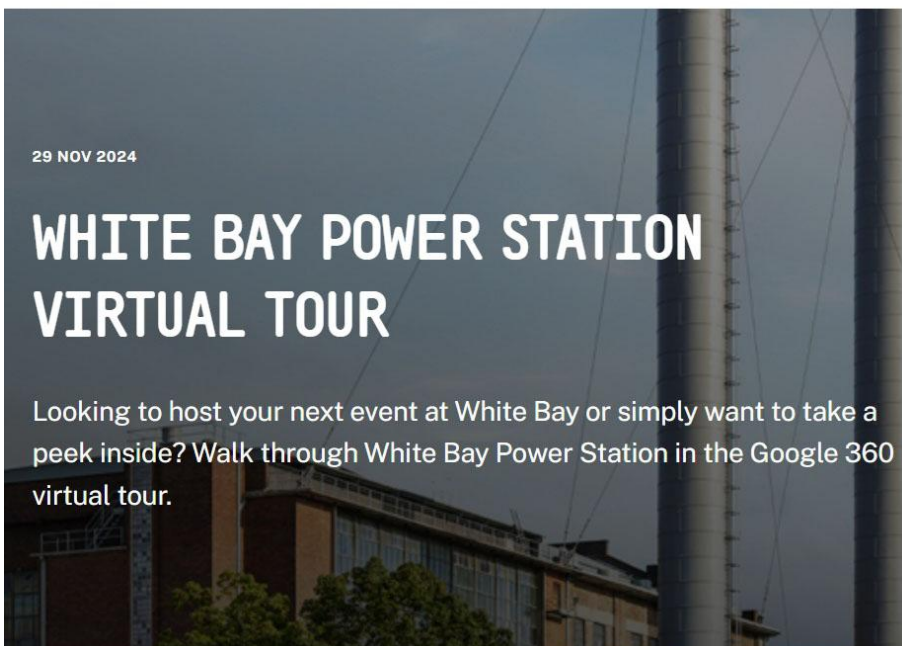
### Site map

- Shows the location of the building
- Labels transport locations



## Building map

- Shows the inside layout of the building
- Labels rooms, facilities and access points



## Virtual tour (360)

- [White Bay Power Station Virtual Tour](#) provides a 360-degree view of the space



## Signs and directions

- Signs are placed around the site to help you find your way
- Staff and volunteers can help you find places

# Reserve a Wheelchair

Wednesday 8 April 2026

## Wheelchair bookings

The Biennale of Sydney has wheelchairs available to borrow for your visit. Reserving a wheelchair is c  
date you will be attending from the drop down on the left and select your preferred time slot. If you h  
or any accessibility issues you would like to discuss, please email [bookings@biennaleofsydney.com.au](mailto:bookings@biennaleofsydney.com.au)

If you have any additional access needs or if there is any information we may need to know to best a  
below.

### Select your registration quantity

Available Sessions

10am - 1pm: \$0.00

1pm-5pm: \$0.00

## Wheelchair Booking

Wheelchairs are available.

- Wheelchairs must be booked before your visit
- Book using the [Biennale of Sydney wheelchair registration form](#)



## Planning Your Time

The site is a large space with many floors.

- You may want to allow extra time to move through the site

## What to Bring

You may like to bring items that support your comfort and access.

- Water
- Sensory supports
- Mobility aids
- A support person or companion

## Who Can Help

Staff and volunteers are available at the information desk and throughout the site.

- They can answer questions and provide directions
- You can ask for help at any time

# Arriving at the Site

## Main Entrance (Gate 1)



The main entrance to the White Bay Power Station is through Gate 1.

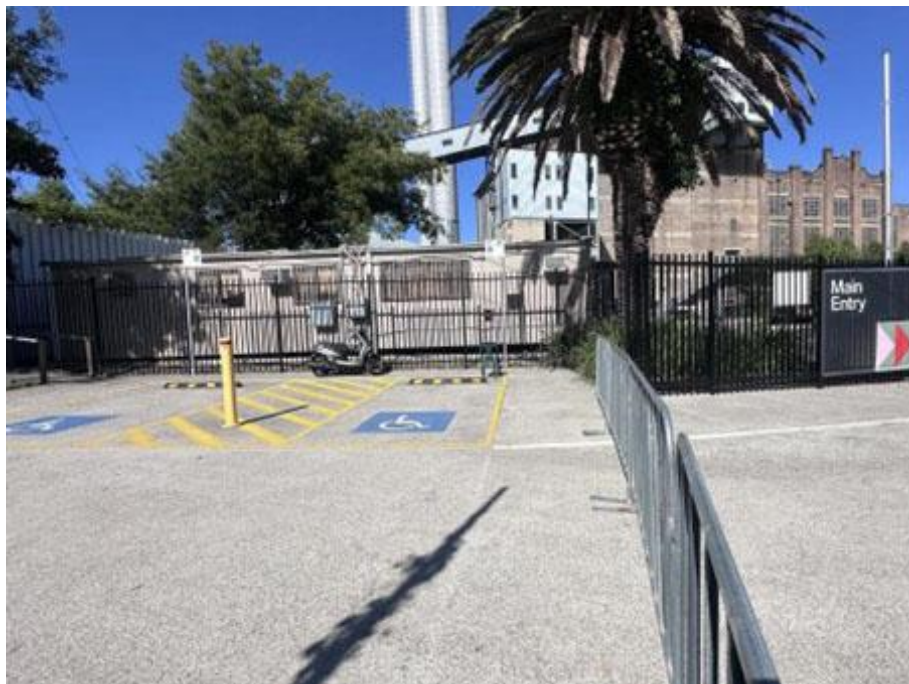
- A sign marked 'Main Entry' with arrows is located on the left side of the fence
- A road and walkway lead into the site.



The ground surface changes as you move through the site.

- Some areas have concrete flooring.
- Some areas are uneven
- Some areas include metal grates

## Parking and Drop-off

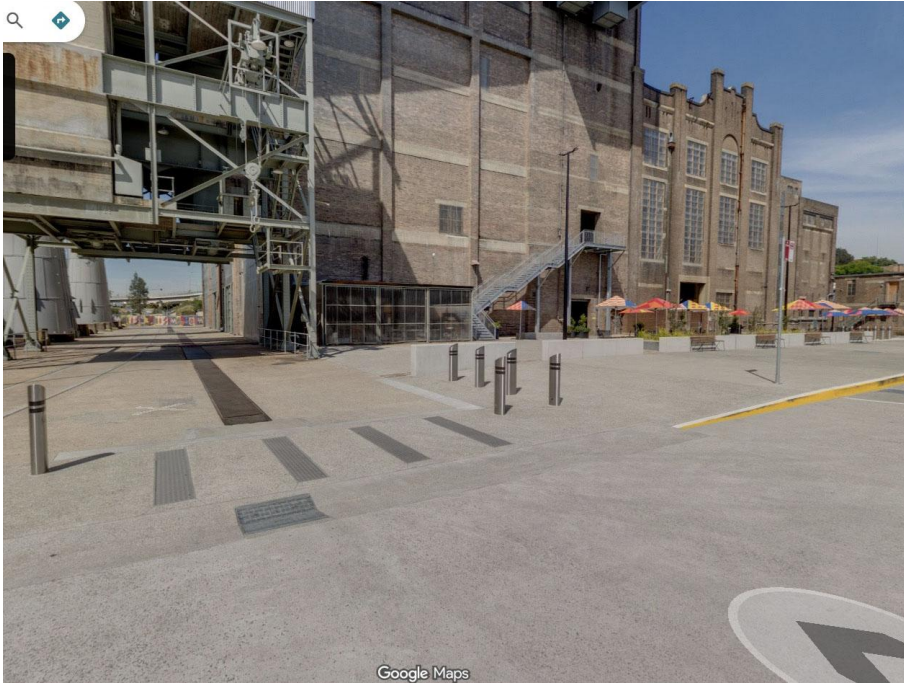


### Parking

- There is no general public parking onsite
- Two accessible parking spaces are located outside the Gate 1 on the left

### Security contact

- You will need to call security when you arrive
- Phone: 0405 364 640
- The number is displayed on the gate



### **Drop-off**

- Enter through Gate 1
- Follow the loop road to drop off passengers

### **Street parking**

- Nearby street parking is available
- Time limits may apply
- Paths may not be fully accessible

# Public Transport



## Bus

Bus stops are located on Robert Street and Victoria Road.

- Routes 441 and 442 run from the Queen Victoria Building York St, Stands B
- About 80 to 120 metres or 2-minute walk
- Travel time may vary depending on your access requirements and the route

## Light Rail

The nearest stop is Rozelle Bay (L1 Line).

From the stop:

- Walk across the Green Link Bridge
- Walk through Rozelle Parklands
- Cross Victoria Road to the venue
- About 1.7 km or 15-minute walk.
- Travel time may vary depending on your access requirements and the route.

# Entering the Building

There are two main entrances to the Lower Boiler House.

- The ground may be uneven with embedded rail tracks

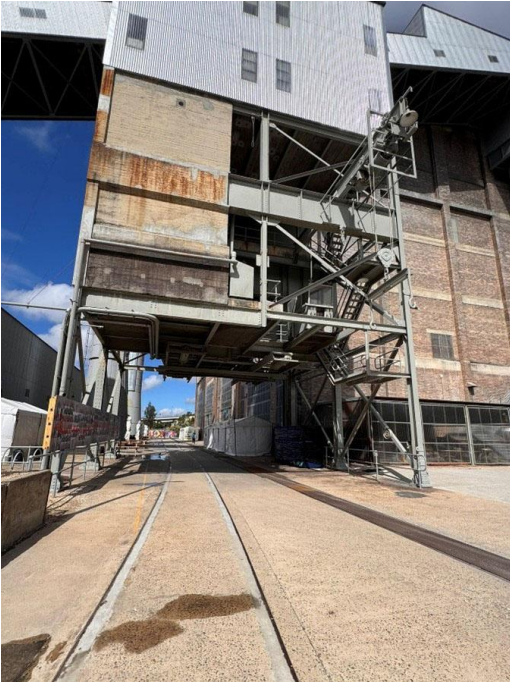
## Main and Accessible Entrance



After entering through Gate 1:

### Step 1

Travel along the left side of the building



## Step 2

Go under the large structure



## Step 3

Enter through a large glass door on the right

## Entrance 2



After entering through Gate 1:

### Step 1

Turn right into the forecourt area



### Step 2

Go into the large door with green streamers on the left

## Information Desk

The information desk is located near Entrance 2 in the white building with the sign 'Biennale of Sydney'.

- Continue straight past Entrance 2
- Staff are available to assist

# Lower Level Environment

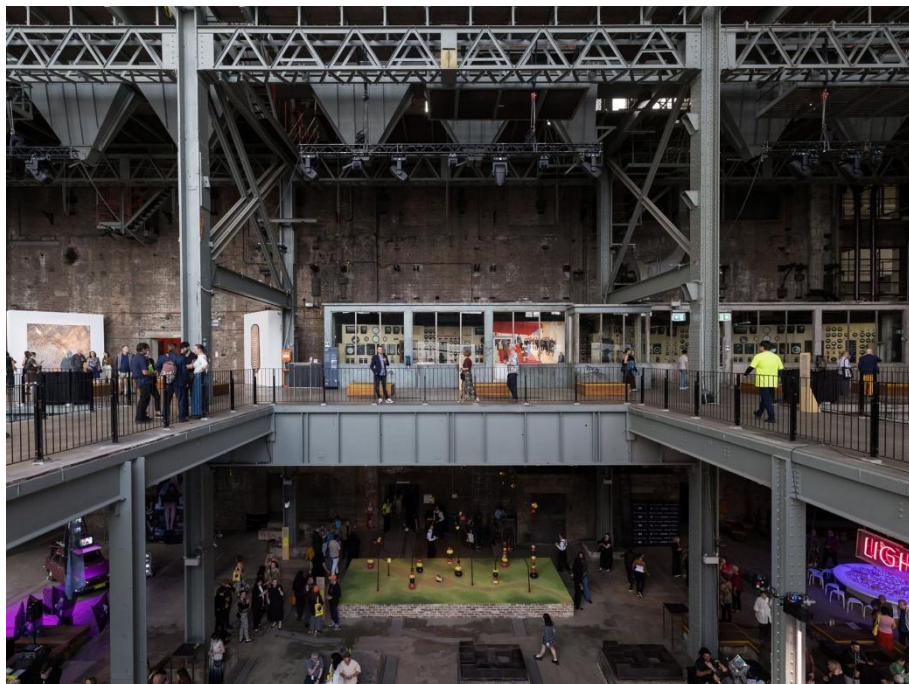


The ground level includes the lower part of the Boiler House and Turbine Hall.

## Physical Environment

- The space is step-free
- The floor is concrete with patches and surface changes
- There are steel columns and low concrete blocks throughout the Boiler House
- There are narrow pathways in the Turbine Hall

# Sensory Environment



## Sound

- The spaces are large with high ceilings
- Sound may echo or carry
- Noise may increase during busy periods and shows

## Busy times

- 11 am to 4 pm on weekends and during events
- You can ask staff for help if you need space or support

## Quiet space

- There is no dedicated quiet space at this site
- Outdoor areas may be used if you need a break

## Air quality

- Some areas may include industrial or strong smells



## Lighting

Lighting changes across the site.

- Some areas are dim and some are bright
- Some areas include coloured lighting

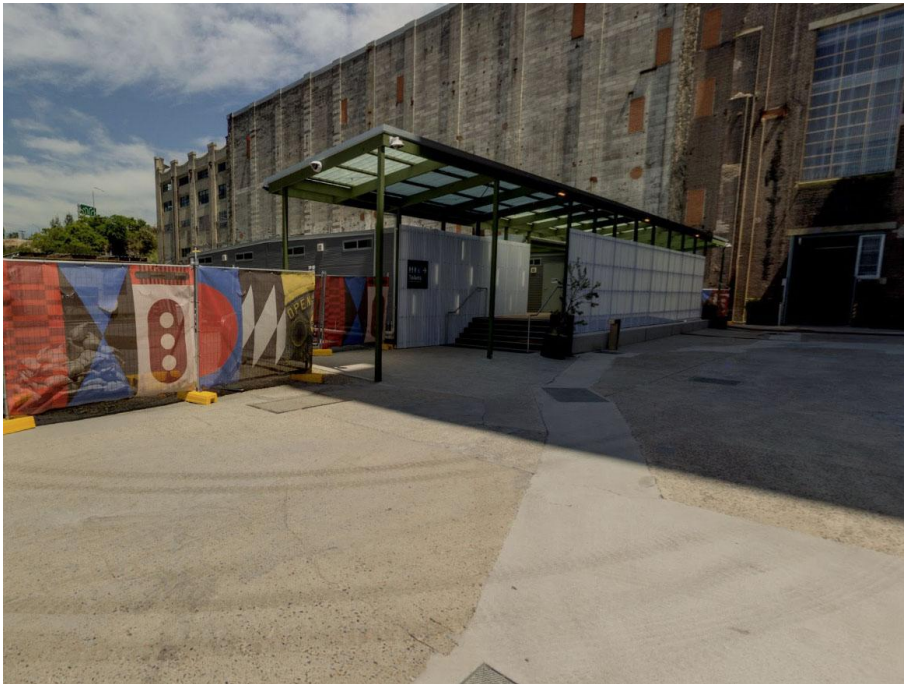


## Seating

- Seating is available throughout the site

# Amenities

## Accessible Bathrooms



Bathrooms are located outside the building.

### From the main entrance:

- Turn right
- Go to the end of the path
- Turn right at the colourful fence

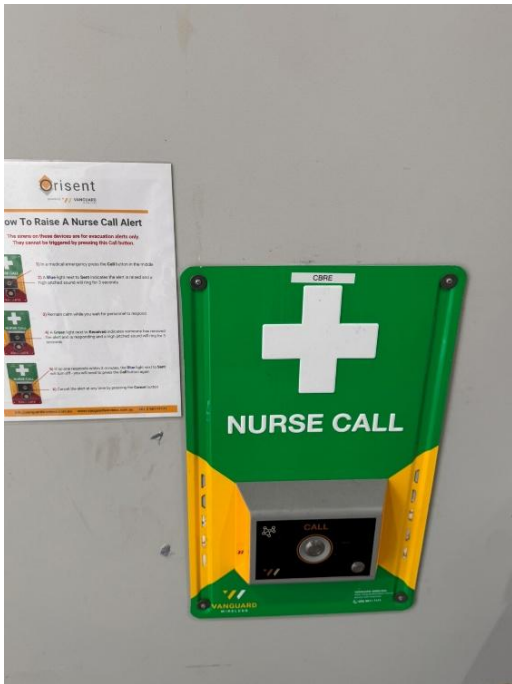


An access ramp is on the right side and stairs are on the left.



### Facilities include

- Two accessible toilets, one left-hand and one right-hand transfer
- Ambulant cubicles
- Toilets



A nurse call buttons is in the accessible bathrooms.

Use it if you need help.

### **Sensory information**

- Automated air fresheners are used in the bathrooms
- Scent may be noticeable

# First Aid

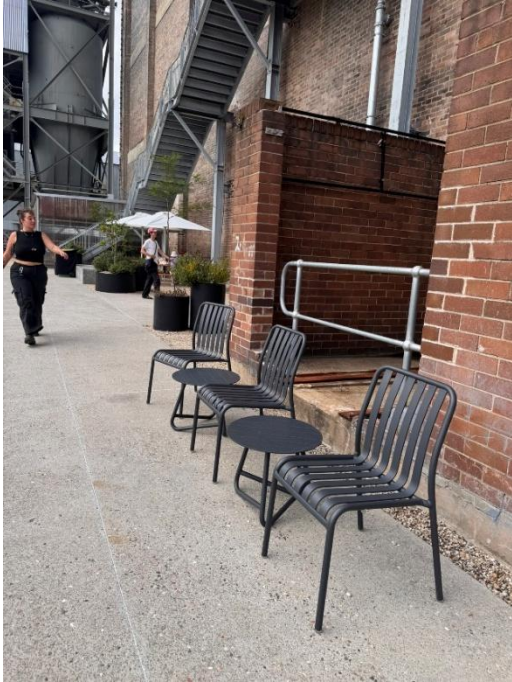


First aid is located on the ground floor of the Turbine Hall

## From the bathrooms:

- Turn left
- Go through a large door
- Turn left again
- Follow the ramp with handrails into a brick room

# Food and Drink



Food and drinks are available.

## Indoor Café and Bar

Located in the Boiler House (ground level)

### Available items

- Coffee, bottled drinks and alcoholic beverages
- Light food

### Access

- Step-free entry
- Counter is bar height and may not suit all users

## Outdoor Food Market

Open on weekends near the main entry

- Range of food options available
- Outdoor seating provided

# Vertical Access and Lift

## Stairs and Ramps

- Located throughout the building
- Handrails are provided



## Lift

A glass lift is available.

### From the main entrance:

- Go through the Boiler Room
- Go through the door
- Turn left

### From the bathrooms:

- Go through the doors
- Turn right



### **The lift goes to all levels:**

- Ground Floor: Turbine Hall, Pump House, Boiler House, Exit, Toilets
- Level 2: Upper Turbine Hall, Upper Boiler House
- Level 3: Upper Turbine Hall, Upper Pump House

### **Lift details**

- Capacity: 3000 kg or 40 people
- Emergency alarm available
- A 24-hour contact number is provided

### **Important**

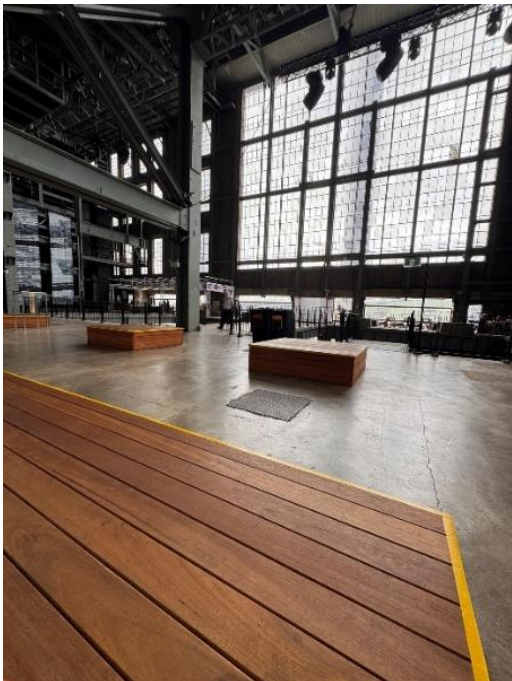
- Do not hold lift doors open
- This may cause the lift to stop working

# Boiler House Upper Level Environment



Reached by the stairs in the Boiler House or lift.

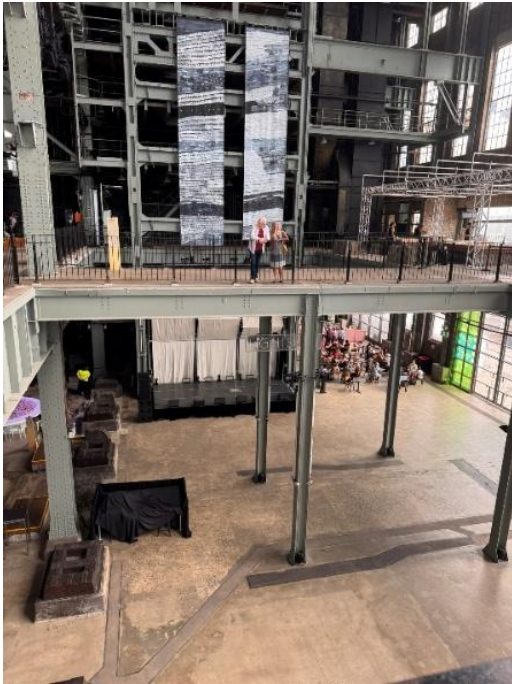
## Sensory Environment



- Very high ceilings (about 38 metres)
- Natural light

- Strong echoes and reverberation

## Performance Area



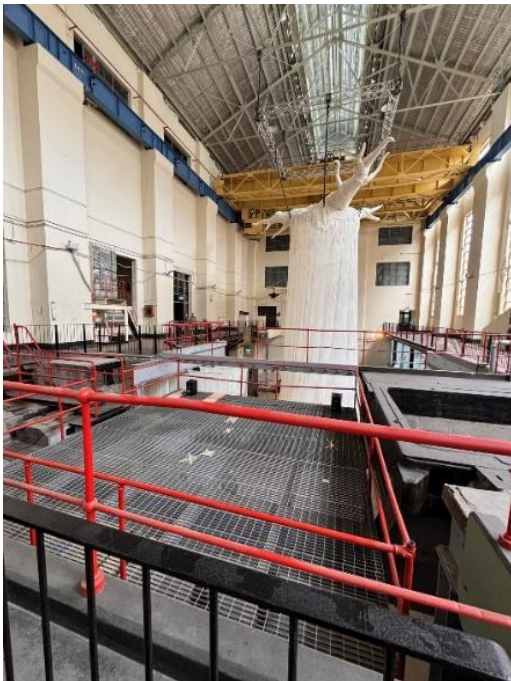
- Seating provided using wooden box structures
- Views into a central stage area through a large central void area

# Turbine Hall Upper Level Environment



Reached by the lift and stairs near the lift and First Aid room.

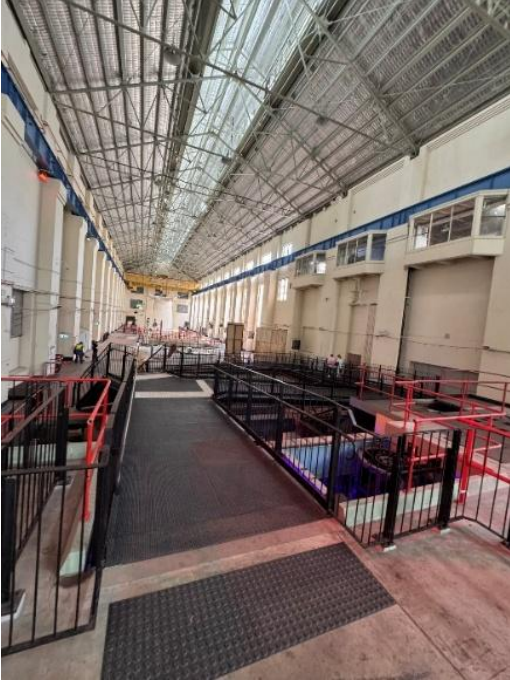
## Sensory Environment



- Ramps and handrails connect different areas
- Large open industrial space

- Natural light
- Strong echoes

## Performance Area



- No fixed seating available