

NAVIGATING CULTURE
The Story of Patyegarang

Public Art for Marrickville Library and Community Spaces

PLUMMER & SMITH

I have read, understood and fully informed myself of the contents, requirements and obligations of this Request for Quotation, and submit this Quotation for the End to End solution for the managment and validation of Supplier compliance.

Plummer & Smith

Upstairs, 85 Main Street, Murwillumbah

New South Wales, 2484

PO Box 204, Murwillumbah, NSW 2484

Belinda Smith

belinda@plummerandsmith.com.au

0438 668 016

02 6672 8250

ABN 92569337083

Registered for GST

017

Creative

Plummer & Smith will be collaborating with Professor Jakelin Troy through workshops and consultation to develop the cultural detail of this artwork.

Belinda Smith's work is site and project specific. Drawing upon cultural and environmental context, materials, fabrication and content are intertwined to inform outcomes. Belinda has successfully completed a number of public art projects including *Faraway Here*, Helensvale Library and Community and Cultural Centre; *This Noble Tree*, Toowoomba Regional Library; *Made of Stars*, Byron Central Hospital; and *One Lux*, Chengdu, China.



Cultural

Professor Jakelin Troy is a Ngarigu woman of the NSW Snowy Mountains. She is the Director of the Aboriginal and Torres Strait Islander Research within the Office of the Deputy Vice-Chancellor Indigenous Strategy and Services at the University of Sydney.

Nardi Simpson is a Yuwaalaraay woman. Nardi is a musician, storyteller and educator with ongoing experience in workshops and opportunities that share and maintain her culture and language.

Joel Davison is a Gadigal man. He is a language and culture educator.



Fabrication

Urban Art Projects will be engaged to construct and install the artwork. UAP collaborates with architects and designers as well as artists. They provide expertise and experience working alongside other creative disciplines for over twenty years.

Plummer & Smith have worked with UAP for over 10 years to produce artworks for the public realm including *One Lux* and *This Noble Tree*.

Full capability Statement attached with submission



Navigating Culture – the story of Patyegarang

The Site

The Library - A meeting place where curiosity and knowledge intersect.

Significantly this artwork opportunity for the new Marrickville Library is at the junction at Lilydale Rd and Marrickville Rd – a meeting point in the architecture.

This artwork proposal for the Lilydale corner will explore overlapping and shared knowledge systems of linguistics and astrological observations between Aboriginal and European cultures. The story of Patygarang and her sharing culture and language with Lt William Dawes provides the context and backdrop to this artwork. The result of their friendship and mutual curiosity is a document that is believed to be the earliest recording of the Sydney Language.

Patyegarang

In a time of colonial invasion a young woman, Patyegarang, befriended a British officer, Lt William Dawes, who was commissioned to establish the first observatory in the new colony. She began to share her language and culture and to learn to read, speak and write English.

Learning and sharing language is one of the most effective ways of understanding between two people. It requires a mutual curiosity, respect, and patience to navigate the confusion and mistake making of the early stages. Their friendship is a beacon of how respect, friendship and generosity can enrich our lives as humans. Their legacy is an example of a positive path to understanding each other.

Astronomy

Looking at the sky for understanding is a knowledge system honed and practiced by both Aboriginal and Western Cultures but with

rather different purposes and outcomes.

European discovery of Australia and the subsequent arrival of the First Fleet happened in a time when western cultures were only just mastering the rhythms and patterns of the sky. The timekeeping systems of longitude and latitude were established at this time and are still used today. Lt Dawes had navigational skills as an astronomer and he was commissioned to become the Colony's time keeper with a key task to set up an observatory for recording the movements of the night sky.

Patyegarang's people had been using the stars to understand and predict resources and for navigational and time keeping means over thousands of years. This understanding was shared through oral tradition – story telling. These stories connect land and sky to make sense of the Earth; its mysteries, creation and cycles.

Language

Humans have recorded language for many thousands of years. In places such as Europe and the Middle East where cultures and civilisations have undergone considerable change even the earliest forms of these documents have provided future civilisations with information about everyday life, conflict and culture.

The Aboriginal people are one of the longest continual cultures on the planet. While art and artefacts have been a strong visual record, story telling and their enduring culture of oral traditions is one of remarkable durability. It has only been in the last 200 years since British invasion that these traditions have been weakened and in some cases become dormant.

Dawes' journals were rediscovered in England in the 1970's and with this discovery came a new narrative of Australian history and a precious record of words, language and human connection.

Reference

The Sydney Language

1993, Jakelin Troy

The first time I spoke in my own language I broke down and wept

2015 Professor Jakelin Troy The Guardian

Stories from the sky: astronomy in Indigenous knowledge

2014 Duane Hamacher, The Conversation

The astronomy of the Kamilaroi and Euahlayi peoples and their neighbours

2014 Robert S Fuller, Macquarie University, Australian Aboriginal Studies

The Artwork

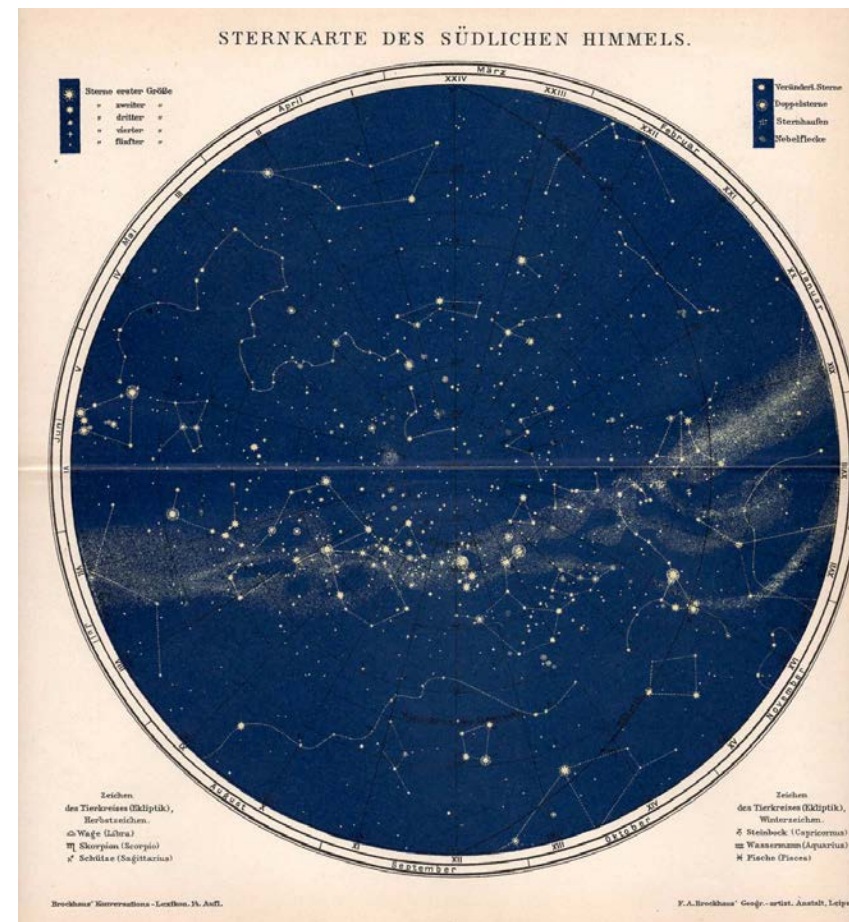
The Lilydale corner provides an opportunity for the artwork to engage with the corner detail of the architecture and have two elements that meet at the junction. The artwork makes use of star maps of the southern hemisphere and the terms used by the Eora people to describe the night sky, bringing together the shared knowledge systems of astronomy and language. The features described by them are familiar to all, such as constellations and moon variations. This familiarity reminds us that we are all humans under one wonderful sky. I imagine that many of these words were shared between Patyegarang and Dawes.

The wall facing Marrickville Road will be a simple partial circle perforated with a pattern that represents the star maps of the southern hemisphere. The night sky pattern will be developed thorough a community workshop with the Eora community. The Lilydale Road facade will feature words of astronomy as published in *The Sydney Language* by Professor Jakelin Troy. Consultation with Professor Troy will refine the content of words from the Sydney language.

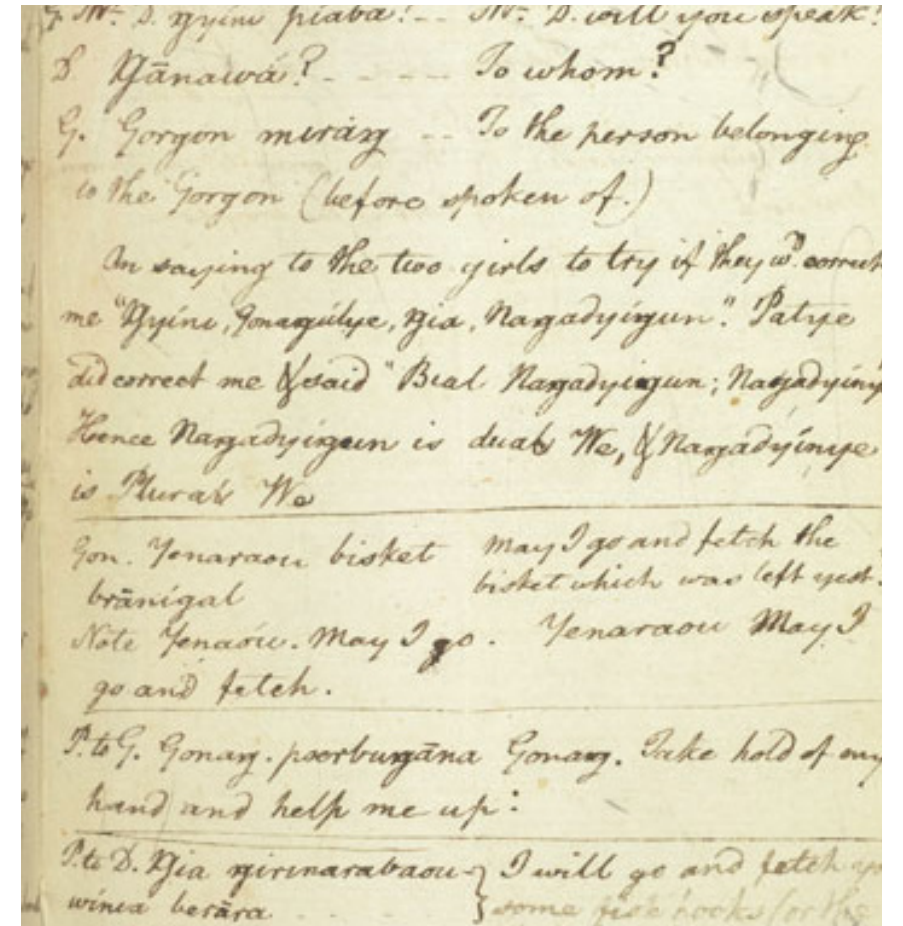
The artwork will be fabricated from lasercut stainless steel sheet, to be softly polished to reflect the local environment. The two elements will gently connect at the building junction. Offset from the wall the artwork will be enhanced by shadow during the day and with lighting designed to back light at night. (lighting quote provided in addition to this proposal)

It is my intent that the Sydney language is given a prominent, public and permanent presence in this location in acknowledgment of the country on which the library stands and in respect to the Eora people. It is proposed that a publication be held within the library that explains the artwork and provides the community with a reference of the local language.

Artwork - key features



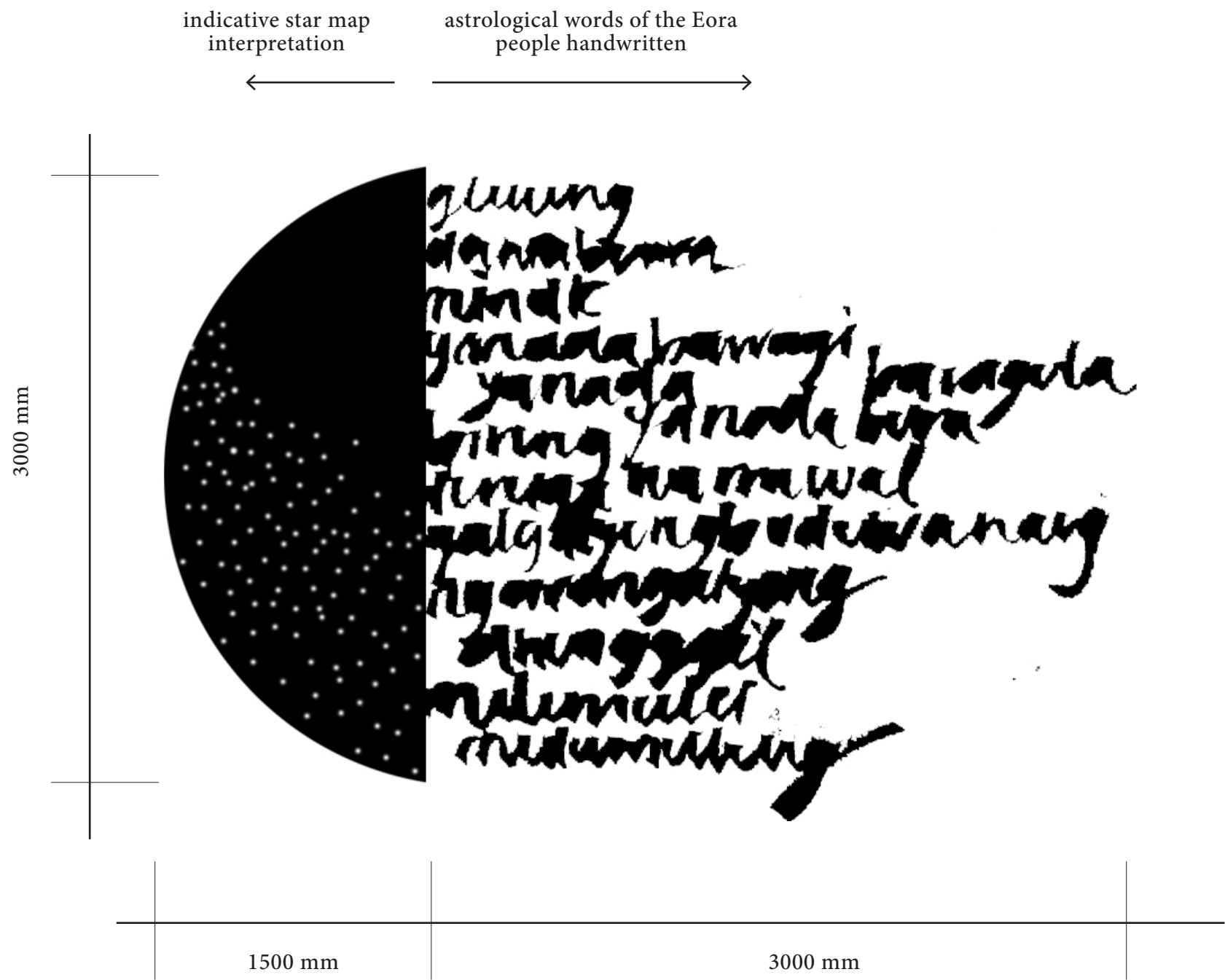
Southern hemisphere map of constellations



Extract from Lt William Dawes Journal - one of many reference documents used to piece together the Sydney language

The Artwork

Proposed detail
Stainless steel sheet (4mm), Laser cut and mirror polished
Starmap to be internally lit, text to be backlit from the edge
only



Preliminary wordlist

The Sydney language	English translation
<i>minak</i>	darkness
<i>darraburra</i>	daylight
<i>yanada</i>	moon
<i>marri yanada</i>	full moon
<i>yanada bura</i>	setting moon
<i>yanada barragi</i>	new moon
<i>garagula</i>	ebb tide
<i>baragula</i>	flood tide
<i>duruga</i>	falling star
<i>mulumulu</i>	falling starts in cluster
<i>warrawal</i>	Milky way
<i>buduwanuny</i>	magellanic cloud
<i>galgalyung</i>	big magellanic cloud
<i>ngarangalyong</i>	small magellanic cloud
<i>dhungagil</i>	Orion's belt
<i>mulumulung</i>	Pleides
<i>birng</i>	stars
<i>guwing</i>	sun
<i>dyarra murrama guwing</i>	setting sun

Artwork - Concept proposal



Indicative view of artwork on the Lilydale Road Corner - Polished stainless steel reflects the sky and local environment.

Proposed materials



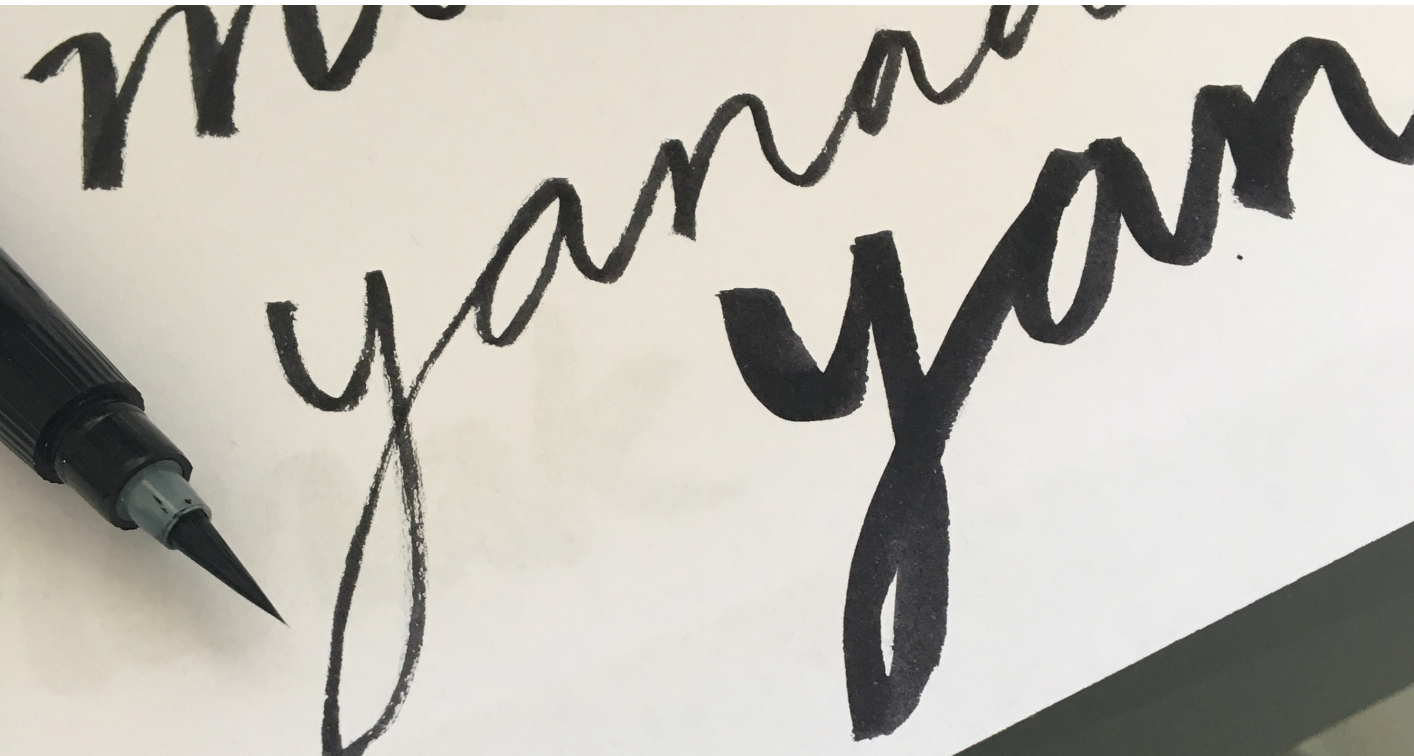
Soft polished stainless steel



Effect of night time lighting (not included in budget)

Workshop 1

Language and cultural workshop - it is an opportunity for the cultural advisory team to meet and discuss the project. Participants for this workshop are Belinda Smith, Professor Troy, Nardi Simpson, Joel Davison and a representative from Inner West Council .



words and script to be a refined through Workshop 1

WORK SHOP I	Language and Culture Workshop
DATE OF WORKSHOP	TBA 1/2 day
WORKSHOP FACILITATORS	Belinda Smith
PURPOSE	To share knowledge and culture specific to the project and create a plan for Workshop II
OUTCOMES	<ul style="list-style-type: none">select a group of words that describe elements of the night sky in The Sydney Languagecreate a plan for undertaking Workshop II including roles and responsibilities, invited participants and planned outcomes
PARTICIPANTS	Professor Jakelin Troy Nardi Simpson Joel Davison Inner west Council Representatives - Victoria Johnstone and Rebecca Carrol
VENUE	TBC
MATERIALS & EQUIPMENT	
RESPONSIBILITIES OF FACILITATORS	<ul style="list-style-type: none">to share knowledge to enable all participants to understand the narrative surrounding the artworkprovide feedback and advice on engaging with the local community
INSURANCE	NA
OH&S	NA

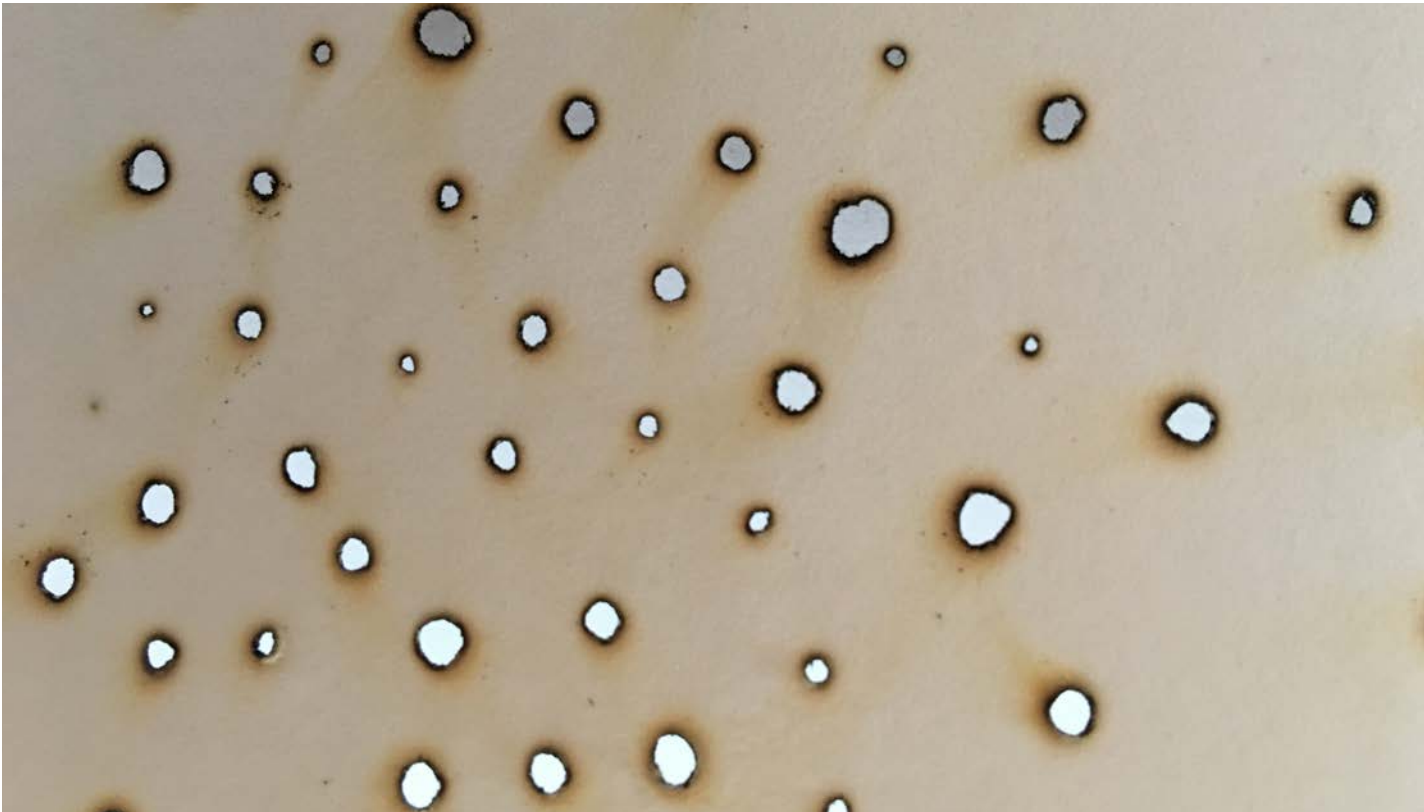
Workshop 2

Mark Making Gathering is a workshop that gives members of the community an opportunity to be directly involved in the project outcome.

Led by Belinda Smith and Nardi Simpson, participants would be invited to apply marks to a surface that will then be transfered/interpreted into the finished stainless steel element representing the stars in the night sky.

This workshop will involve participants working as a group to make perforations into paper using fire (or pointed impements if fire is not practical). The process of making perforations will give an immediate result encouraging the group to make marks thoughtfully and to see the outcomes in real time.

When the artwork is complete and installed at Patyegarang Place the community will see the results of their input in permanence.



Paper perforated with fire in Workshop 2 - for translation into finished artwork

WORK SHOP II	Mark Making Workshop
DATE OF WORKSHOP	TBA full day allowed
WORKSHOP FACILITATORS	Belinda Smith, Nardi Simpson, Joel Davison
PURPOSE	To involve community members in the making of a public art work for the Marrickville Library and Community Spaces
OUTCOMES	<ul style="list-style-type: none">gather community together to share culture and knowledge about astronomy and languagerecord storiesparticipate in creating a design that represents the night sky through piercing paper with fire tipped sticks
PARTICIPANTS	Inner West Aboriginal community <ul style="list-style-type: none">the age range should include Elders to children, children to be supervised by a parent or teachernumber of participants TBA
VENUE	Inner West Council to provide venue <u>Requirements</u> <ul style="list-style-type: none">open space to accomodate number of participants (TBA)well ventilated area, possibly outdoor covered area with non flamable surfaces (ie outdoor paved area)
MATERIALS & EQUIPMENT	<ul style="list-style-type: none">large sheets of high quality drawing papersmaller sheets of paper for practice and experimentationcamp stove or gas flamebamboo sticks
RESPONSIBILITIES OF FACILITATORS	Belinda Smith <ul style="list-style-type: none">introduce the artwork concept to participants and demonstrate method of mark making with fire, and discuss desired outcomes. Nardi Simpson and Joel Davison <ul style="list-style-type: none">to assist with Mark Making processfacilitate discussions around participants understanding of language and astronomy to expand upon the themes of the public artwork. These discussions may contribute to a document that records knowledge and culture for future generations.
INSURANCE	Public liability Insurance - responsibility TBC
OH&S	Inner West Council to provide policy and assistance

Project Plan

Phase 2 - Part 1

Design Development

- Workshop 1 - Professor Troy, Nardi Simpson and Joel Davison to refine the vocabulary of the astrological terms and advise on Workshop 2.
- Workshop 2 - *Mark Making* workshop with Eora community. Night sky/astrological pattern to be marked out by participants of workshop.
- Artist to discuss design of artwork with Inner West Council’s project team to ensure co-ordination of outcomes and timelines.

Deliverables - artist to supply design development for review and approval

Timeline

approximately 6-8 weeks

Phase 2 - Part 2

Documentation

- Digitise patterns and text for supply to fabricator for laser cutting
- Artist to detail and document artwork in co-ordination with UAP and client team

Deliverables - artist to supply documentation for review and approval

Timeline

approximately 8-12 weeks

Phase 3

Fabrication and install

- UAP to manage all aspects for fabrication and install. All Work Health and Safety obligations are undertaken by UAP
- Artist to liaise with UAP and Inner west Council throughout this phase to ensure artwork outcomes are as per approved documentation

Deliverables - artwork installed

Timeline

12-18 weeks

Artwork Installed July 2018

Belinda Smith

PLUMMER & SMITH is a design studio working at the interface of art and landscape. The studio is concerned with how art and landscape architecture can draw out, facilitate, and express social, environmental, and cultural connections to place.

The studio was founded in 2012 by landscape architect, Dan Plummer and artist, Belinda Smith - a cross discipline and collaborative partnership. We apply rigorous creative thinking, deliberately crafting outcomes specific to each site and project.

The studio has established a broad cross range of projects and clients, regularly working with local government and private clients. We are proud to have commissioned work locally, nationally and internationally.

Belinda Smith has worked in the field of public art since 2004. Coming from a background in interior and product design the process of translating art into the public realm ignited a spark in her. She is driven by opportunities to form a site responsive creative vision and forging collaborative relationships with projects teams and the artisans and craftspeople that make her work.

Of particular interest is our connection with our environment, anthropology and craft practices. Her respect for workmanship, materiality and sustainable practice has a strong influence on the development of Belinda’s work.

Belinda co-founded Plummer and Smith in 2012 with her partner, Landscape architect, Dan Plummer.

Education

Royal Melbourne Institute of Technology 1996-97
Diploma of Arts – Interior Design
Queensland College of Art 2002-04
Bachelor of Design, Product Design

Public Art Commissions

<i>Resident</i>	Habitat, Byron Bay 2017
<i>Made of Stars</i>	Byron Central Hospital 2016
<i>This Noble Tree</i>	Toowoomba City Library and Civic Square 2016
<i>One Lux</i>	Taikoo Li - Chengdu China 2015
<i>Lanterns</i>	Gold Coast Chinatown Lanterns 2015
<i>Faraway, Here</i>	Helensvale Library and Community and Cultural Centre, Gold Coast City Council, 2013
<i>River Catch</i>	Upper Coomera Community Hub, Gold Coast City Council, 2013
<i>Cumulus</i>	Marina Bay Sands, Singapore Bates Smart, 2013
<i>Rock Hopping</i>	Cabarita Beach, Tweed Shire Council, 2011
<i>Garland</i>	Crown Casino, Melbourne Bates Smart, 2010
<i>Herd</i>	Urbane Restaurant Brisbane, 2009
<i>Substance</i>	Chatswood Chase, 2009
<i>Inflorescence</i>	Old Government House QUT Brisbane, 2009
<i>Lightness of Air</i>	One Airport Drive, Brisbane Airport Corporation, 2008
<i>From the boughs of the fig tree</i>	Mater Mothers Hospital Brisbane, 2008

Work Experience

Plummer & Smith

2014	Abdul Aziz Gates, Centre for World Cuture - Saudi Arabia Sirius Street Architectural Screens - Brisbane
2013	Shenyang Wanxiang City, Retail environment Sculptural element concepts UAP Shanghai The Springs, Textile design development UAP Shanghai
2012	Kunshan Arts and Culture Centre, Foyer artwork UAP Shanghai Ping An Dome, light design UAP Shanghai ShenYang Hyatt, Screen Patterns UAP Shanghai

Urban Art Projects (Lead Designer 2006-2010)

Key Design Projects

2009	Chatswood Chase, Colonial First National, Sydney Soul Screen, Juniper Group, Gold Coast
2008	Campbell Parade Sundial, Bondi Beach, Waverley Council One Airport Drive, Brisbane Airport Corporation
2007	Playscape, Mater Mothers Hospital, Brisbane

Key Projects assisting Artists (Client interface, Design and Fabrication)

2009	Black Opium Rooms / Fiona Foley - State Library Queensland Darwin Waterfront / Katrina Tyler, Dadang Christanto, Mandy Ridley - NT Govt Cairns Airport / Thanakupi, Alick Tipoti, Daniel Wallwork - Cairns Airport Mackay Q150 Artworks / Fiona Foley - Mackay Council
2008	Redfern Park Upgrade / Fiona Foley - City of Sydney Hamilton Northshore / Fiona Foley - Brisbane City Council
2007	Reconciliation Place / Judy Watson, Thanakupi, Vic McGrath - National Capital Authority

EDAW Aecom 2005-2006

Developed art strategies and integrated art and design proposals for urban and landscape projects. Projects included Caxton Street Pedestrian Bridge, Ipswich Riverheart Parklands and Gateway Upgrade noise walls.

Professional Experience

NAVA Member since 2013
Flying Arts Alliance Inc Member
Northern Rivers Design Advisory Panel (DAP) - member
Byron Shire Council Public Art Advisory Panel - Community member 2012-2014

Cultural Advisory Team

Professor Jakelin Troy is a Ngarigu woman of the NSW Snowy Mountains. She is the Director of the Aboriginal and Torres Strait Islander Research within the Office of the Deputy Vice-Chancellor Indigenous Strategy and Services at the University of Sydney.

Professor Troy has studied the language of the Eora people for over 30 years and published her paper *The Sydney language* in 1993. Her particular expertise lies in the fields of Australian languages and linguistics, anthropology, visual arts and education.

Major recent projects include developing the Framework for Aboriginal Languages and Torres Strait Islander Languages within the Australian Curriculum – Languages and in collaboration with Dr Adam Geczy and Indigenous academics in Australia and north America she has founded ab-Original: Journal of Indigenous Studies and First Nations’ and First Peoples’ Cultures Penn State Press, first edition due in January 2017.

Publications

The Sydney Language, AIATSIS, Canberra, 1994

King Plates: a History of Aboriginal Gorgets, Aboriginal Studies Press, 1993

Australian aboriginal contact with the English language in New South Wales, 1788 to 1845, ANU 1990

Nardi Simpson is a Yuwaalaraay woman. Nardi was born and raised in the Marrickville LGA and is a songwriter, performer and educator. She has a wealth of experience working at University of Sydney, UNSW, Taronga Zoo and the Sydney Festival. She is a member of the Stiff Gins and The Spirit of Things Collective among many other roles.

Joel Davison is a Sydney Aboriginal (Gadigal) man who was recently given an opportunity to learn and teach the Sydney Aboriginal language. Drawing from varied experience as part of the education department at the Royal Botanic Gardens and as a web developer at an Indigenous media business, Ngakkan Nyaagu, Joel believes that language is a strong component of a wholesome understanding of Aboriginal culture, heritage and history.

ABOUT UAP

BACK THEN. HERE & NOW

UAP collaborates with emerging and established artists, architects and designers to deliver creative outcomes for the public realm. The company is acknowledged as a leader in the field of public art and design solutions with an impressive list of awards and clients on a global scale.

Established in 1993 by Matthew and Daniel Tobin as Urban Artists then re-named Urban Art Projects in 2000, the practice has grown significantly to offer an international service for creative projects working with clients worldwide.

With over 140 staff, UAP have studios in Brisbane, Shanghai and New York and regional hubs in Melbourne, Singapore, Shenzhen and in the Middle East. UAP has delivered projects in Australia, China, North America, Southeast Asia and the Middle East engaging in all aspects of the delivery process from commissioning & curatorial services, through concept generation & design development right into fabrication and installation.

UAP offers a unique turn-key approach to commissioning large-scale artwork and creative design solutions, providing low-risk solutions for clients through our company's three streams of STUDIO, FACTORY, and SUPPLY.

UAP takes pride in embracing uncommon creativity and extending creative practice.

UAP STUDIO

With in-depth experience of governments' Public Art Policies, the Curatorial Team develop Public Art Master Plans and Strategies, set public art visions and source and assist selection of artists for site specific and innovative public art. Moreover, the team are like-minded creatives & makers who can be trusted to craft and fabricate any artist's concepts.

UAP FACTORY

Working closely with architects and developers to assist the design and construction of their visionary designs, the project team works collaboratively to realise unique architectural elements such as façades, foyer, interiors etc. We interrogate, investigate and build collaboratively.

UAP SUPPLY

From custom designed street furniture and playscapes to standard ranges, UAP SUPPLY produces distinctive furniture and functional objects for the urban environment.

**“WE OFFER A UNIQUE
TURN-KEY APPROACH TO
COMMISSIONING LARGE-SCALE
ARTWORK & CREATIVE
DESIGN SOLUTIONS,
PROVIDING LOW-RISK
SOLUTIONS FOR CLIENTS”**



1. Founders Matthew + Daniel Tobin at the UAP Brisbane Studio 2. Florentijn Hofman at UAP Shanghai workshop 3. Judy Watson with UAP design team in the Brisbane workshop

PREVIOUS PROJECTS

This Noble Tree

Project Description

This work represents the Hoop Pine in its full-scale grandeur. A symbol of the unique landscape of the Toowoomba range and the accumulation of knowledge and culture held within the Library.

Araucaria Cunninghamii, The Hoop Pine, was identified by colonial botanist Allan Cunningham during his explorations in southern Queensland and New South Wales. Extracts of Allan Cunningham's expedition report to Governor Darling in 1828 adorn the inside of the hoop pine arcs above.

This grand tree can grow to 60 metres tall (the length of this space). These trees can live for 450 years and thus a tree standing today could span our lifetime, Allan Cunningham's, and beyond to the Gaibal and Jarrowair people.

Materials

Hoop Pine Plywood

Location

Toowoomba Library

Contract Value

\$100,000

Date Completed

2016

Client

Toowoomba Regional Council

Referee Contact

Kelly Neill

Principal Project Manager

Project Services

P 07 4688 6906 M 0408 411 391

kelly.neill@tr.qld.gov.au

Fabricator

Urban Art Projects



PREVIOUS PROJECTS

Made of Stars

Project Description

*‘We have calcium in our bones, iron in our veins, carbon in our souls, and nitrogen in our brains. 93 percent stardust, with souls made of flames; we are all just stars with people names.’
Nikita Gill*

Located on the edge of the transition between landscape and hospital environment, this garden sculpture looks at the chemistry of the human body and what we share with the world and universe around us.

Materials

Weathered Steel

Location

Byron Central Hospital, Byron Bay NSW

Contract Value

\$30,000

Date Completed

2016

Client

New South Wales Health

Fabricator

Metal, Stone and Wood



PREVIOUS PROJECTS

Rock Hopping

Project Description

Rock Hopping is an artwork that celebrates the landscape and the community of Cabarita Beach and Bogangar. The artwork was inspired by the local landscape and memory of summer holidays; rock hopping and discovering the treasures of the coast and the sea among the rock pools and crevices of this beautiful landscape.

The project included collaboration with a local writer, historian and aboriginal artist and drawing workshops with local school children. Writing, drawings and local facts were carved into the surface of a group of 5 shaped basalt stones that reference the geology of the headland.

Materials
Basalt stone

Location
Cabarita Beach, NSW

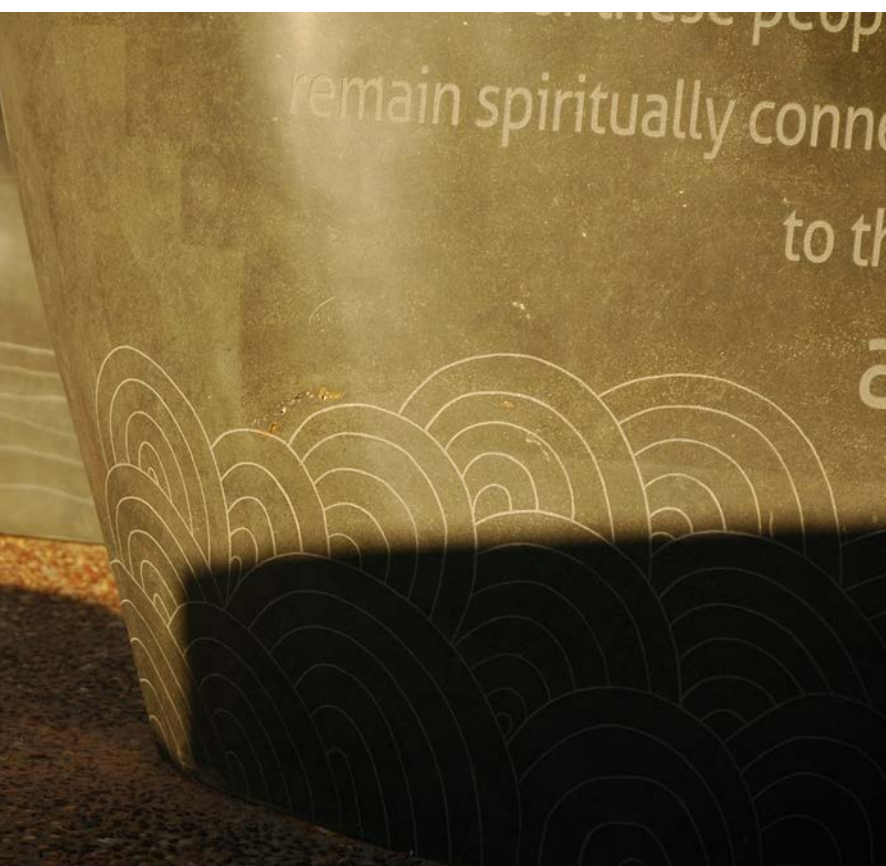
Contract Value
\$25,000

Date Completed
2010

Client
Tweed Shire Council

Referee Contact
Robert Appo
rappo@tweed.nsw.gov.au

Fabricator
Dunn & Sons, stonemasons



PREVIOUS PROJECTS

Faraway, Here

Project Description

Faraway, Here draws upon the local environment and community context of the Helensvale Library and is integrated with the architecture creating a seamless, thoughtful and identifiable placemaking elements in the urban landscape. This artwork was nominated for the Art and Architecture Award for the Queensland Architecture Awards 2014 by Lahz Nimmo Architects.

A host of bird species fly, every year, from the far reaches of the planet to Helensvale's local wetlands. They gather in commune to rest and nest. In a similar way stories, knowledge and ideas from every corner of the globe gather in the library for all to access. Libraries are truly inclusive places and Faraway, Here celebrates the freedom symbolised by birds, books and knowledge.

Materials

Custom porcelain tiles

Location

Helensvale Library

Contract Value

\$125,000

Date Completed

2010

Client

Gold Coast Council

Architect

Lahz Nimmo

Fabricator

Urban Art Projects



PREVIOUS PROJECTS

One Lux

Project Description

One Lux = the light cast by the moon on a clear night. Humanity has lit their world to such extremes that in many densely populated cities we have lost sight of the moon and stars altogether.

A constructed moon, suspended between buildings reminds us not to forget the scale of our existence and our place in the universe. The pattern has developed through observing imagery of the surface of the moon (and the moon itself) and how the moon (a spherical mirror) might be reflecting the stars of the universe.

Materials

Stainless Steel

Location

Sino-Ocean Taikoo Li Chengdu, China

Contract Value

\$120,000

Date Completed

2015

Fabricator

Urban Art Projects

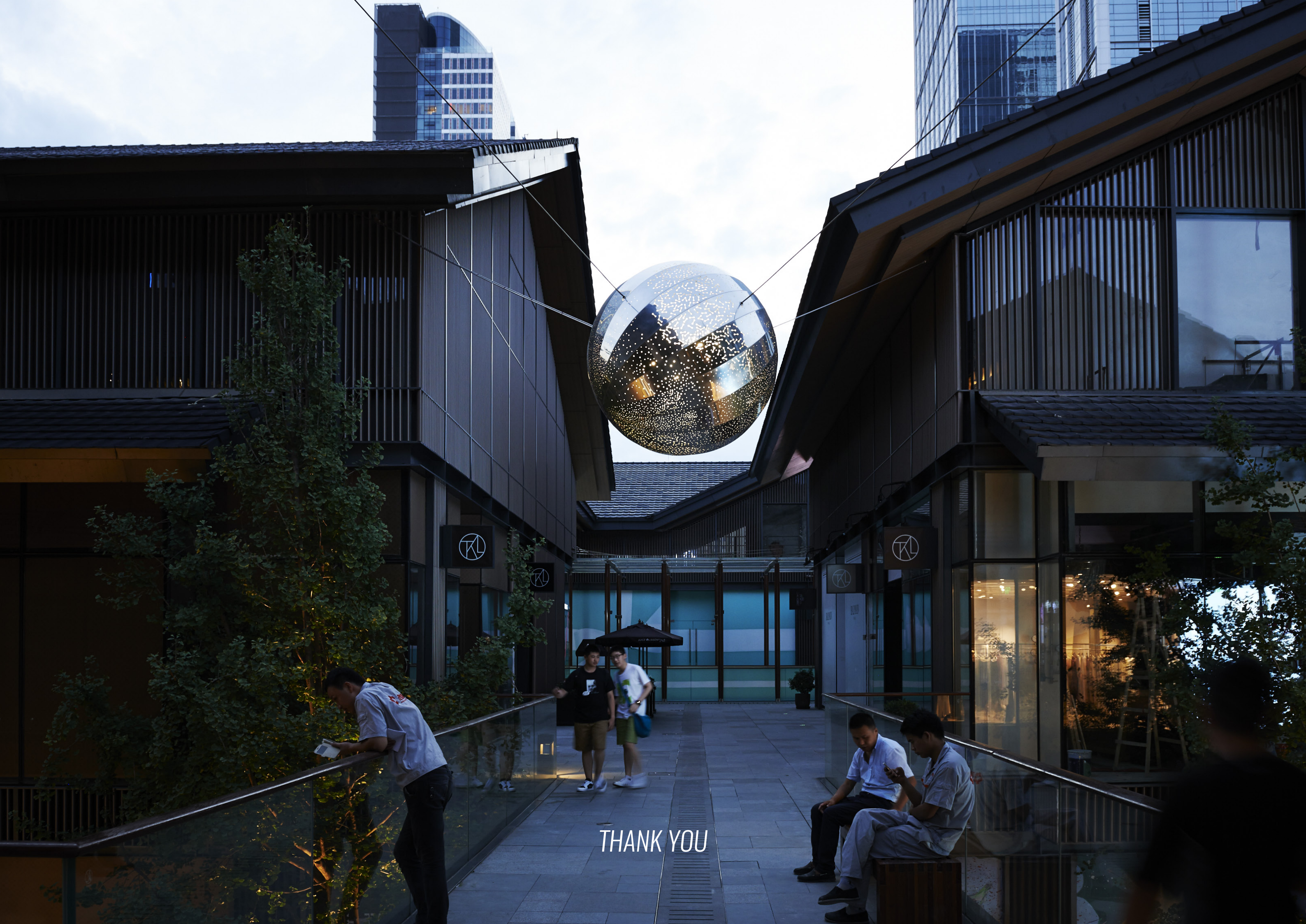


REFEREE CONTACTS

Referee Contacts

Kelly Neill
Principal Project Manager
Toowoomba Regional Council
Project Services
P 07 4688 6906 M 0408 411 391
kelly.neill@tr.qld.gov.au

Robert Appo
Aboriginal Development Officer
Tweed Shire Council
rappo@tweed.nsw.gov.au



THANK YOU