

TRAVEL ACCESS GUIDE

Biennale of Sydney
White Bay Power Station
28 Robert St, Rozelle

March - June 2024

THE 24TH BIENNALE OF SYDNEY

The forthcoming opening of the White Bay Power Station (WBPS) for the 2024 Biennale of Sydney marks a significant moment, merging history, culture, and artistic expression. Situated on the revered Gari Gurad/Nura and Nattai Gurad/Nura lands, known for their expansive rock and sandstone shelters, the power station holds deep historical roots, having powered Sydney's tram system and later, its rail network since its construction between 1912 and 1917.

The envisioned transformation of the power station into a hub for cultural and community experiences, especially with a dedicated focus on First Nations programming, represents a promising shift towards embracing diverse narratives within our cultural fabric.

The theme of the 24th Biennale, "Ten Thousand Suns," curated by Cosmin Costinas and Inti Guerrero, promises

to be thought-provoking. It delves into the intricate interconnections between cultures, shedding light on the multifaceted nature of our cultural, political, and economic landscapes. By exploring the complexities of 'othering' in contemporary contexts, the theme offers a valuable lens through which to examine and understand the evolving socio-political dynamics shaping our world.

PLAN YOUR TRIP

Plan your trip ahead with NSW Transport's Trip Planner.

Visit here:
<https://transportnsw.info/>

Or Scan the QR code





No car parking is available

Bus services will travel from the QVB. Public and active modes of transport are detailed below.

BIENNALE OPENING HOURS

Biennale is open Tuesday to Sunday from 11am to 6pm, except Wednesdays when it is open until 9pm. For more information visit: www.biennaleofsydney.art

B BUSES

Regular route buses and special event buses will operate regularly to WBPS during the event. Regular Opal fares apply. Visitors with accessibility requirements should utilise the special event bus 443. A map of the bus routes is provided overleaf in page 3. Plan your trip at transportnsw.info for the latest information.

Special Event Bus (Route 443)

To provide additional capacity during the event, special event shuttle bus route 443 will run between QVB in the city and WBPS. Route 443 will pick up from Stand B at QVB and drop off at WBPS within the site. Return buses will leave from WBPS and drop off at QVB Stand F. Buses will start 30 minutes prior to opening with the following timing:

B Town Hall (Stand B) to WBPS Northern Forecourt (Loop Service)

Weekdays: every 15 minutes
Weekends: every 10 minutes

Friday 8 March - Opening Night

The 443 special event bus will run every 5 to 10 minutes from 6.30pm to midnight.

Regular Route Buses (Routes 441 & 442)

Regular route 441 and 442 bus services make stops outside WBPS on Robert Street. Buses pick up from Stands B and D at QVB and drop off on Robert Street near Victoria Road. The route summary and average timings for regular route services is as follows:

441 City Art Gallery to Birchgrove (Loop Service)

Mon-Fri : 07:00 AM to 11:30 PM every 10-15 minutes
 Weekend : 08:20 AM to 11:30 PM every 30-60 minutes

442 City QVB to Balmain East Wharf (Loop Service)

Mon-Fri : 05:30 AM to 11:40 PM every 10 minutes
 Weekend : 07:00 AM to 11:40 PM every 10 minutes



WALKING

WBPS is easily accessible for pedestrians from local areas and public bus stops on Robert Street and Victoria Road. The nearest public bus stops are within 100 metres, which is a 2 minute walk. See the Active Travel Map on page 4 for walking routes you can easily access.



CYCLING

WBPS is surrounded by on-road and off-road bike routes that can connect you to the broader network.

See the Active Travel Map on page 4 for more information and the map on page 5 for dedicated bike parking areas available at WBPS.



FERRIES

Balmain East Wharf is located 2.6 km away from the WBPS. The wharf is serviced by the F4 ferry route from Pyrmont to Circular Quay. Once at the wharf there is a bus stop on Darling Street serviced by the 442 service which runs every 10 minutes. The 442 will stop at the venue on Robert Street.

Balmain Wharf is serviced by the F3 and F8 ferry routes.

The ferry timetable is shown below:

F3 Parramatta to Circular Quay

Mon-Fri : 08:00 AM to 11:30 PM every 60 minutes
 Weekend : 08:00 AM to 11:30 PM every 60 minutes

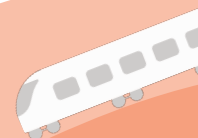
F4 Circular Quay to Pyrmont Bay

Mon-Fri : 06:00 AM to 08:00 PM every 20-30 minutes
 Weekend : 08:00 AM to 08:00 PM every 20-30 minutes

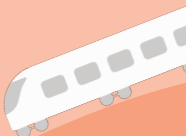
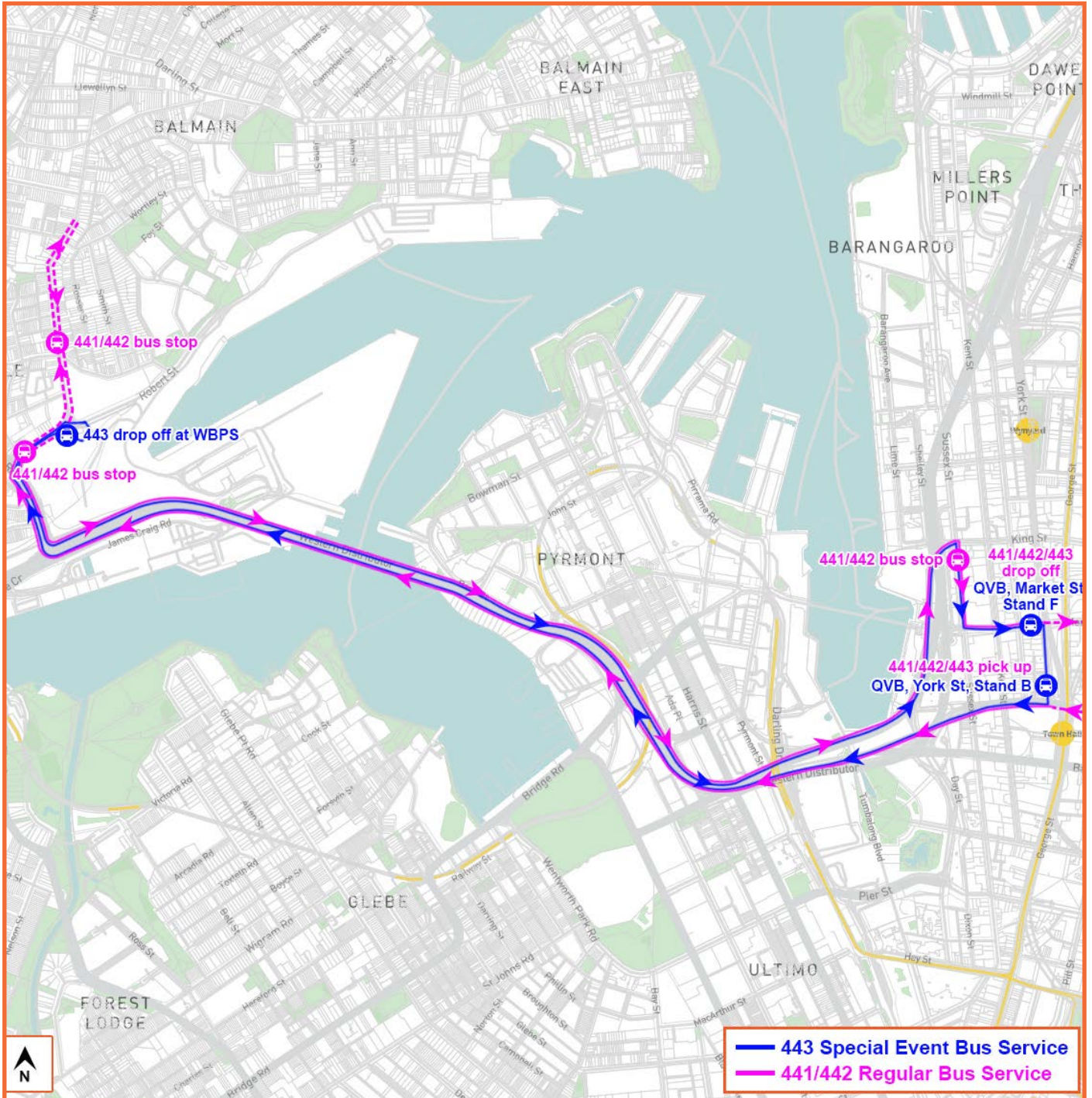
F8 Cockatoo Island to Circular Quay

Mon-Fri : Check Trip Planner
 Weekend : Check Trip Planner

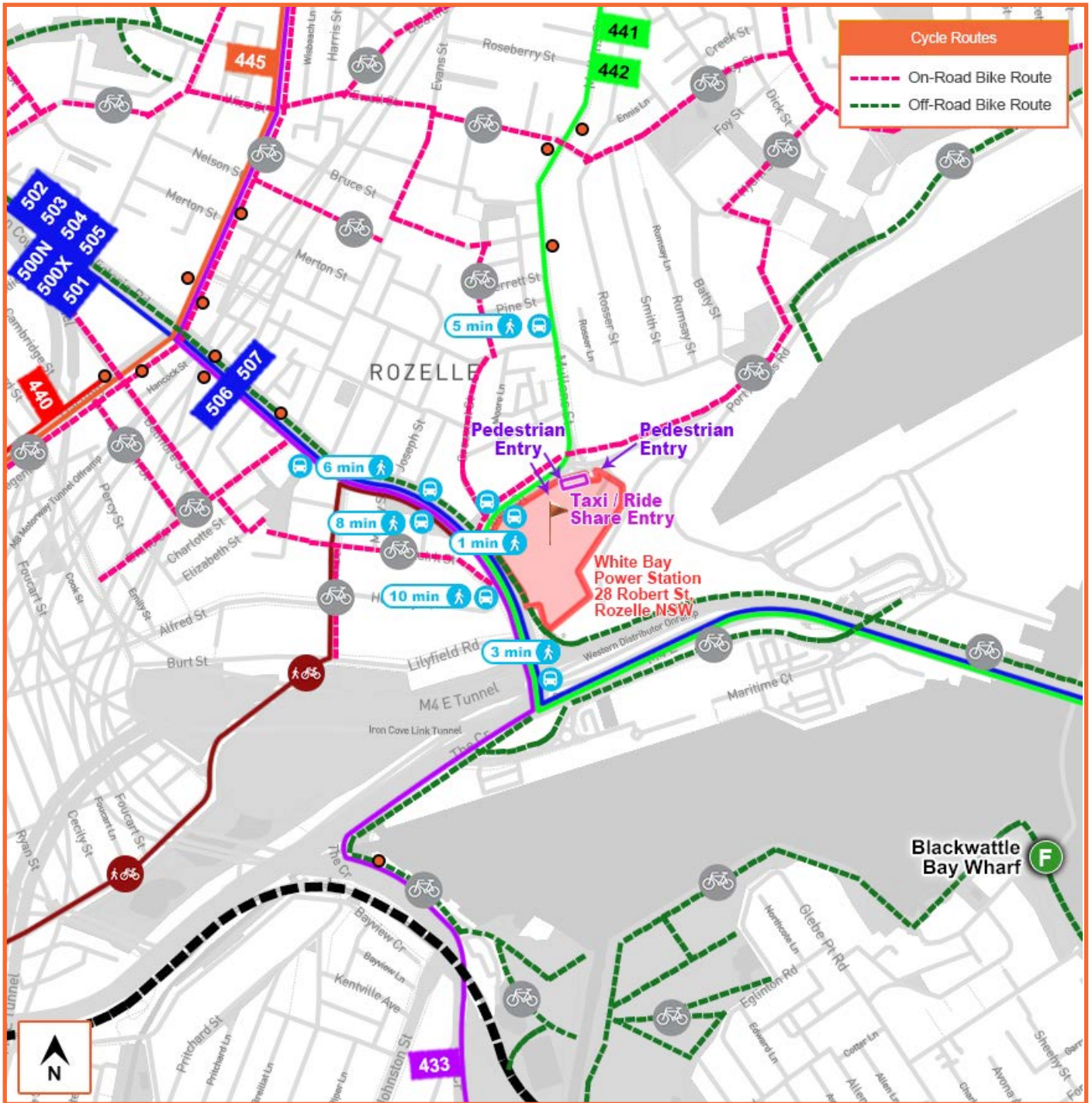
For other ferry stops, such as Blackwattle Bay, see transportnsw.info.

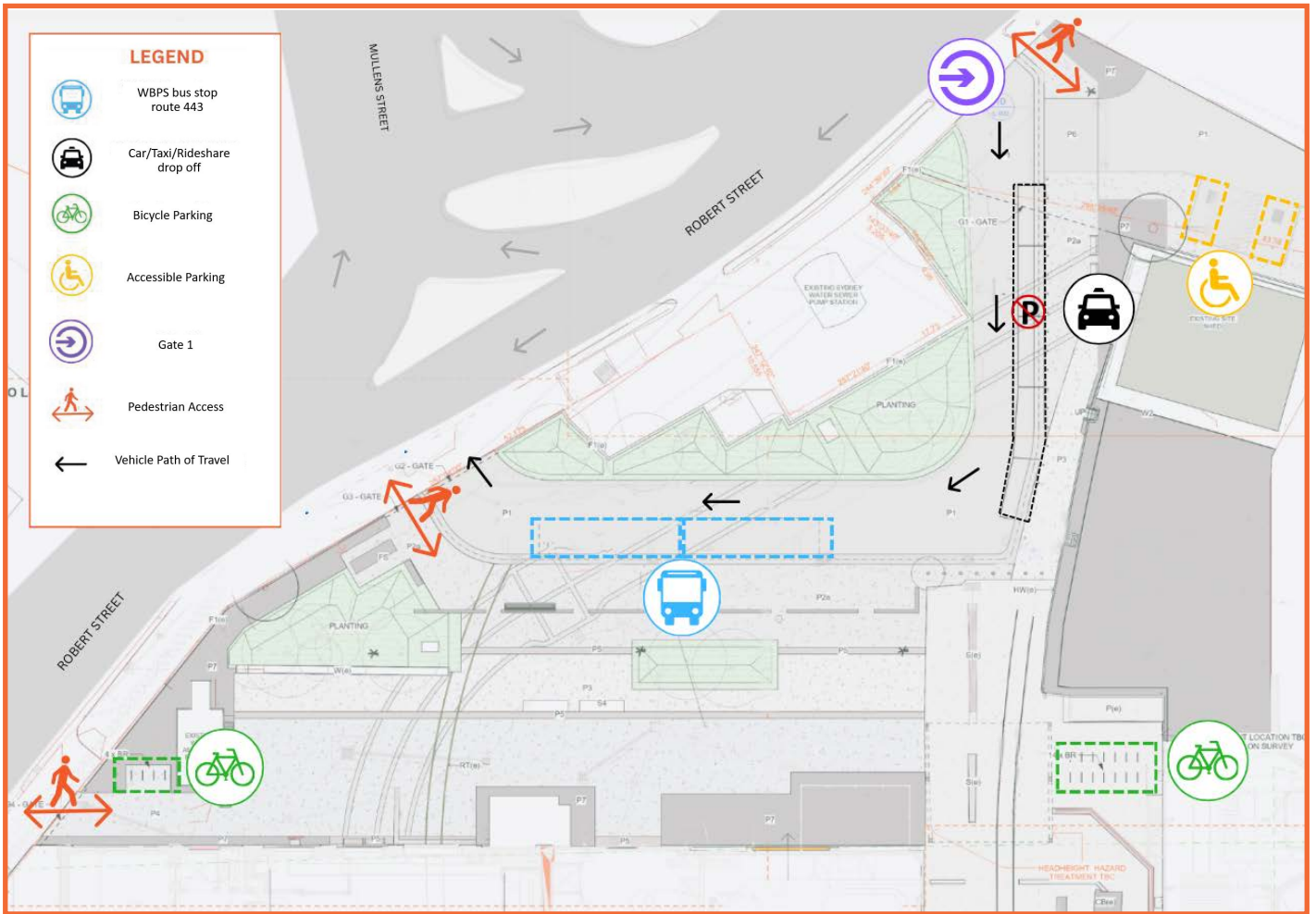


BUS SERVICES



ACTIVE TRAVEL MAP





VENUE ACCESS

Pedestrian access to the WBPS is provided via three access points located on Robert Street site frontage, as shown on the above map. These provide convenient access to the broader active and public transport network

Vehicular access (e.g. Rideshare and Taxis) is via the entry-only driveway at Gate 1 to the northeast of the WBPS frontage to Robert Street. Vehicles will circulate one-way clockwise to pick-up and drop-off passengers, before departing via the exit-only driveway onto Robert Street at the WBPS's northwest frontage. There is no parking available at the WBPS or in nearby streets.

FACILITIES

To encourage sustainable travel, WBPS is equipped with facilities including:

- Racks for 36 bicycles
- Dedicated shuttle bus pick up/drop off zone
- Two accessible car parking spaces
- No other car parking on-site

