



# Review of Environmental Factors The Cooks to Cove GreenWay (In-Corridor Works)

---

## Appendix H: Aboriginal Due Diligence Assessment (ELA, 2020)

---

June 2021



Greenway In-Corridor Works –  
Aboriginal Heritage Due Diligence Assessment

---

**Inner West Council**

---

## DOCUMENT TRACKING

<b>Project Name</b>	Greenway In-Corridor Works – Aboriginal Heritage Due Diligence Assessment
<b>Project Number</b>	20SYD - 16451
<b>Project Manager</b>	Rebecca Ben-Haim
<b>Prepared by</b>	Daniel Claggett
<b>Reviewed by</b>	Karyn McLeod
<b>Approved by</b>	Daniel Magdi
<b>Status</b>	Final
<b>Version Number</b>	1
<b>Last saved on</b>	28 October 2020

This report should be cited as 'Eco Logical Australia, 2020 *Greenway In-Corridor Works – Aboriginal Heritage Due Diligence Assessment* . Prepared for Inner West Council'

## ACKNOWLEDGEMENTS

This document has been prepared by Eco Logical Australia Pty Ltd with assistance from Inner West Council

### *Disclaimer*

*This document may only be used for the purpose for which it was commissioned and in accordance with the contract between Eco Logical Australia Pty Ltd and Inner West Council. The scope of services was defined in consultation with Inner West Council, by time and budgetary constraints imposed by the client, and the availability of reports and other data on the subject area. Changes to available information, legislation and schedules are made on an ongoing basis and readers should obtain up to date information. Eco Logical Australia Pty Ltd accepts no liability or responsibility whatsoever for or in respect of any use of or reliance upon this report and its supporting material by any third party. Information provided is not intended to be a substitute for site specific assessment or legal advice in relation to any matter. Unauthorised use of this report in any form is prohibited.*

Template 2.8.1

## Contents

<b>1. Introduction .....</b>	<b>1</b>
1.1 Project background.....	1
1.2 Assessment Process.....	1
<b>2. Basis for Cultural Heritage Management .....</b>	<b>3</b>
<b>3. Assessment Process .....</b>	<b>4</b>
3.1 Identify if the Proposed Activity will Disturb the Ground Surface .....	4
3.2 Database Searches and Known Information Sources .....	4
3.2.1 AHIMS Search .....	4
3.2.2 Local, State and National Heritage Registers.....	6
3.2.3 Previous Archaeological Investigation .....	8
3.3 Landscape Assessment .....	10
3.4 Predictive Model.....	11
3.5 Visual Inspection.....	14
3.6 Impact Avoidance Assessment .....	15
<b>4. Statutory Requirements.....</b>	<b>16</b>
<b>5. Conclusions and Recommendations .....</b>	<b>17</b>
5.1 Conclusion .....	17
5.2 Recommendations.....	17
<b>References .....</b>	<b>18</b>
<b>Appendix A AHIMS Search Results .....</b>	<b>19</b>

## List of Figures

Figure 1: The Study Area .....	2
Figure 2: AHIMS registered sites in/within the vicinity of the study area .....	7
Figure 3: Soil landscapes and hydrology of the study area.....	13
Figure 4: Shared path near Taverners Hill light rail station .....	14
Figure 5: Hawthorne Canal near the northern end of the study area .....	14
Figure 6: Train infrastructure, Cadigal Park .....	14
Figure 7: Study area Cadigal Park.....	14
Figure 8: Waratah Flour Mills and light rail line, study area to the right.....	15
Figure 9: Hawthorn Canal and study area adjacent to Hoskins Park.....	15
Figure 10: Study area at West Lewisham.....	15
Figure 11: Study area adjacent to the Allies Flour Mills.....	15

## List of Tables

Table 1: Search Parameters for the AHIMS database search .....	4
Table 2: Search results for the AHIMS database search .....	4
Table 3: Frequencies of site types and contexts .....	5
Table 4: Summary of the Cumberland subregion (Source: Morgan 2001) .....	10
Table 5: Predictive model.....	12

# 1. Introduction

## 1.1 Project background

Eco logical Australia (ELA) was engaged by the Inner West Council to prepare an Aboriginal Heritage Due Diligence Assessment to support the construction of a shared-use path, lighting and landscaping within the Inner West Light Rail Corridor and adjacent land (hereafter referred to as ‘the study area’; Figure 1). The In-Corridor package is the result of the updated concept design for the GreenWay completed in June 2020 and consists of two discrete areas known as the central links and the southern links between Dulwich Hill and Lewisham in Sydney's inner western suburbs.

This assessment has been undertaken in accordance with the *Due Diligence Code of Practice for the protection of Aboriginal Objects in New South Wales* (DECCW 2010a) to identify if Aboriginal objects are likely to be located within the proposed study area and, if so, whether the proposed works have the potential to harm those objects.

## 1.2 Assessment Process

The methods undertaken during this assessment include:

- A search of the Aboriginal Heritage Information Management System (AHIMS) register maintained by Heritage NSW, Department of Premier and Cabinet (Heritage NSW) to establish if there are any previously recorded Aboriginal objects or places within the study area
- A search of the Ashfield Local Environmental Plan (LEP) 2013, the Leichhardt LEP 2013 and Marrickville LEP 2011 Schedule 5 (Environmental Heritage), the NSW State Heritage Inventory (SHI) and the Australian Heritage Database in order to determine if there are any sites of archaeological significance or sensitivity located within the study area
- A desktop review of relevant previous archaeological assessments to understand the local archaeological context and assist in predicting the likely occurrence of unrecorded archaeological sites or objects
- A site inspection to identify any Aboriginal sites and areas of sensitive landforms.

The aim of this report is to establish whether known or additional unrecorded Aboriginal objects are present within the study area and determine whether further assessment and/or an Aboriginal Heritage Impact Permit (AHIP) is required.

The due diligence process involves *“taking reasonable and practical measures to determine whether your actions will harm an Aboriginal object and, if so, what measures can be taken to avoid that harm”* (DECCW 2010a:4).

If harm cannot be avoided, further technical studies and approvals will be required (see section 4).

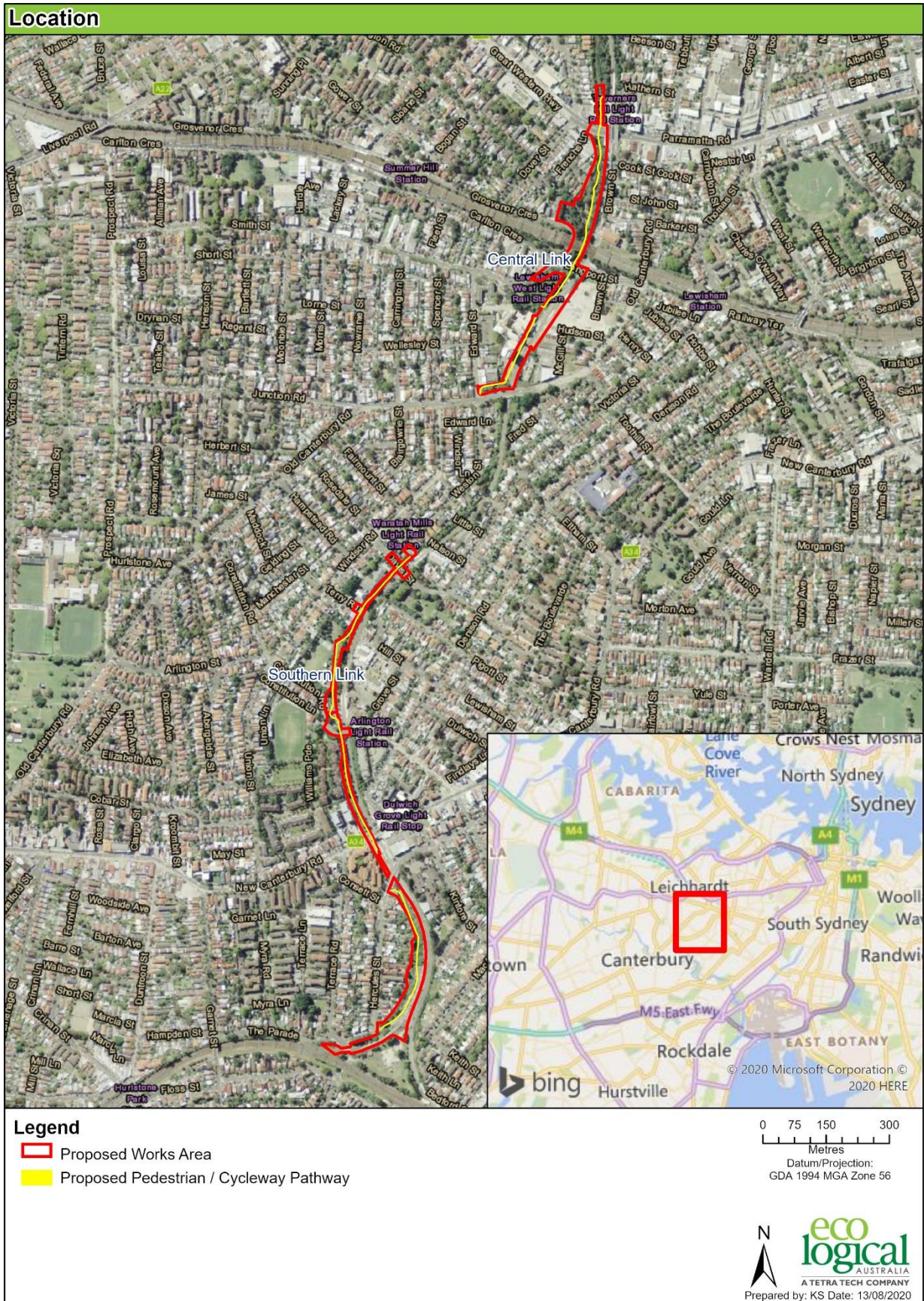


Figure 1: The Study Area

## 2. Basis for Cultural Heritage Management

*Places of cultural significance enrich people's lives, often providing a deep and inspirational sense of connection to community and landscape, to the past, and to lived experiences ... they are irreplaceable and precious (Australia ICOMOS Burra Charter 2013:1).*

Traditionally, heritage and archaeological assessments have focused on the significance of the tangible elements of cultural heritage (Brown 2008). Items such as structures and archaeological artefacts have been considered predominantly in terms of their scientific/research potential and representativeness (New South Wales Heritage Office 2015:20-24). By focusing on the scientific qualities of heritage, many of the intangible qualities of heritage were not considered. This is especially crucial when participating in the management and protection of Aboriginal cultural heritage. By nature, Aboriginal cultural heritage is multi-faceted: it consists not only of tangible structures and objects of value for scientific investigations, but also of a deeply complex array of intangible expressions, such as stories, memories, and traditions. Many of the rights and interests of Aboriginal communities in their own heritage is formed on the basis of this intangibility. It stems from their spirituality, customary law, original ownership, and continuing custodianship (Australian Heritage Commission 2002:5). These intangible expressions often share a strong link with the landscape. Byrne *et al.* (2003:3) describe this connection in the form of a map, where individuals:

*Carry around in [their] heads a map of the landscape which has all these places and their meanings detailed on it. When we walk through our landscapes the sight of a place will often trigger the memories and the feelings [that] go with them ... it is the landscape talking to us.*

Crucially, those who are not connected to the landscape in question will not be able to discern these intangible meanings embedded in the landscape; they can only come to recognise the significance by consulting with local knowledge holders (Byrne *et al.* 2003:3). And, even so, they may vary between individuals, reflecting unique experiences.

By recognising the rights and interests of Aboriginal knowledge holders and community members in their cultural heritage, all parties involved in the identification, conservation, and management of this cultural heritage must acknowledge that Aboriginal people (Australian Heritage Commission 2002:6):

- Are the primary source of information on the value of their heritage and how this is best conserved
- Must have an active role in any heritage planning processes
- Must have input into primary decision-making in relation to their heritage so that they can continue to fulfil their obligations towards this heritage
- Must control the intellectual property and other information relating specifically to their heritage, as this may be an integral aspect of its heritage value.

As such, cultural heritage sites and objects are fundamental elements of Aboriginal peoples' identities, connections, and belonging to their communities. The careful protection and management of this heritage is essential for the preservation of connection between past, present, and future.



## 3. Assessment Process

### 3.1 Identify if the Proposed Activity will Disturb the Ground Surface

The proposed works will require landscaping, land grading and earthworks in order to create the in-corridor area adjacent the Inner West light rail line. These activities will disturb the ground surface; therefore, the due diligence process moves to the next stage.

### 3.2 Database Searches and Known Information Sources

#### 3.2.1 AHIMS Search

The AHIMS database is maintained by Heritage NSW and regulated under Section 90Q of the *National Parks and Wildlife Act 1974* (NPW Act). The AHIMS database holds information and records regarding the registered Aboriginal archaeological sites (Aboriginal objects, as defined under the Act) and declared Aboriginal places that exist in NSW.

A search of the AHIMS database was conducted on 3 August 2020 to identify if any registered Aboriginal sites were present within, or adjacent to the study area (Appendix A).

The AHIMS database search was conducted using the search parameters in Table 1 below.

**Table 1: Search Parameters for the AHIMS database search**

Search Parameters	
GDA Zone	56
Eastings	319762 - 336451
Northings	6242354 - 6252853
Buffer	50 m

The AHIMS search result are summarised in Table 2 below.

**Table 2: Search results for the AHIMS database search**

Search Results	
Aboriginal sites recorded	113
Aboriginal places declared	0

No Aboriginal sites have previously been recorded inside the study area or within 1 km. The majority of the AHIMS sites within the search area are located adjacent to the Cooks River and its tributaries, the Parramatta River and Sydney Harbour and the Sydney CBD.

The distribution of recorded Aboriginal sites within the search area is shown in Figure 2. The frequencies of site types and contexts recorded within the AHIMS database search area are listed in Table 3 below.

**Table 3: Frequencies of site types and contexts**

Site Context	Site Features	Number	%
<b>Valid</b>	Aboriginal Ceremony & Dreaming	1	0.9
	Aboriginal Resource & Gathering	1	0.9
	Artefact	15	13.2
	Artefact; Midden; Aboriginal Ceremony and Dreaming	1	0.9
	Artefact; Midden; Rock Engraving	1	0.9
	Artefact; Midden	1	0.9
	Artefact; Potential Archaeological Deposit (PAD)	2	1.8
	Burial, Artefact, Aboriginal Ceremony and Dreaming	1	0.9
	Grinding Groove	1	0.9
	Midden	11	9.6
	Modified Tree	3	2.7
	PAD	25	22.0
	Rock Engraving	1	0.9
	Shelter with Art	2	1.8
	Shelter with Deposit	6	5.2
	Shelter with Deposit; Shelter with Art	1	0.9
	Shelter with Deposit; Shelter with Midden	13	11.5
	Shelter with Deposit; Shelter with Midden; Aboriginal Ceremony & Dreaming	1	0.9
	Shelter with Midden	2	1.8
	Shelter with Midden, Shelter with Art	2	1.8
Shelter with PAD	6	5.2	
Water Hole	1	0.9	
<b>Destroyed</b>	Artefact	2	1.8
	Artefact; PAD	1	0.9
	Artefact; Aboriginal Resource & Gathering	1	0.9
	Hearth; PAD	1	0.9
	PAD	1	0.9
	Rock Engraving	2	1.8
	Midden	1	0.9
<b>Not a Site</b>	Burial	1	0.9
	PAD	3	2.7
	Midden	1	0.9
<b>Deleted</b>	Midden	1	0.9
<b>Total</b>		<b>113</b>	<b>100</b>

### 3.2.2 Local, State and National Heritage Registers

Searches of the Australian Heritage Database, the State Heritage Register (SHR), the Ashfield LEP 2013, Leichhardt LEP 2013 and Marrickville LEP 2011 covering the study area were conducted on 2 September 2020 in order to determine if any places of archaeological significance are located within the study area.

No Aboriginal archaeological sites recorded on these databases occur within the study area. Multiple historical heritage items listed in the Ashfield, Leichhardt and Marrickville LEPs occur within and adjacent to the study area.

A separate heritage assessment (Statement of Heritage Impact (SoHI)) has been prepared by ELA that assesses the proposed works and their potential to impact upon the significance of these historical heritage items (ELA 2020).

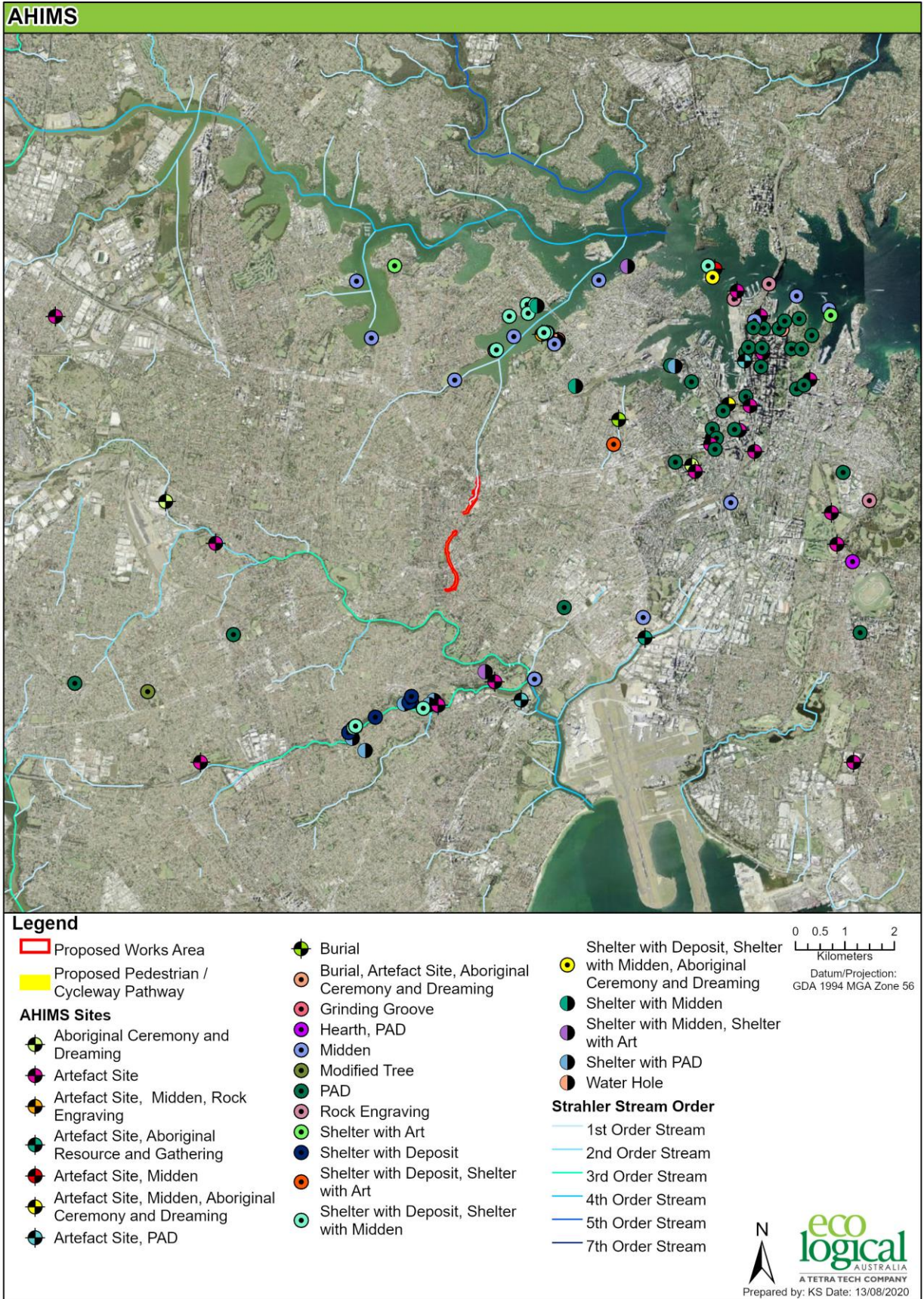


Figure 2: AHIMS registered sites in/within the vicinity of the study area

### 3.2.3 Previous Archaeological Investigation

There have been several archaeological studies conducted in the Inner West region of Sydney in recent years. A majority of these studies have focussed on historical archaeology, as the heavily disturbed nature of the region and its geological character make Aboriginal heritage rare. A summary of Aboriginal heritage assessments that have occurred within the Inner West Council LGA is presented below.

Archaeological and Heritage Management Solutions Pty Ltd, 2008. *Allied Flour Mills Site – Aboriginal Heritage Impact Assessment*. Prepared for EG Funds Management.

Archaeological Heritage Management Systems (AHMS) was engaged by EG Funds Management to undertake an Aboriginal heritage assessment of the Allied Flour Mills sites in Summer Hill, located directly adjacent to the Central Link portion of the current study area. Aboriginal community consultation formed a part of this study, which included site survey with a representative of the Metropolitan Local Aboriginal Land Council (LALC).

A majority of the site, including the entire area bordering the current study area, was assessed as having low archaeological potential due to significant levels of cutting and filling, as well as the long history of usage, exploitation and modification of Iron Cove Creek (Hawthorne Canal). A small portion in the western half of the site was determined to have moderate archaeological potential, based on historical use of the land in this area being low impact in nature (residential housing). Recommendations provided by the AHMS study stated that any development in the moderately sensitive section of the site would require subsurface investigation, but that no further archaeological assessment would be required for the rest of the study area.

CSJ Consulting, 2017. *Construction Heritage Management Plan: M4 East – Design and Construction*. Prepared for WestConnex.

CSJ Consulting were previously engaged to develop a heritage management plan to support the construction of M4 East between the suburbs Homebush and Haberfield, which forms part of the larger WestConnex project.

The study goes into detail regarding historic heritage within the area, but only gives brief mention to Aboriginal heritage. One AHIMS site was identified within the study area, but outside of the development footprint of the project. The study also identified two areas of potential archaeological sensitivity within the study area; but again, identified these areas as being outside the project footprint and will therefore not to be impacted. The study concluded that based on the terrain within the project footprint being highly disturbed and unlikely to contain unidentified Aboriginal archaeological objects and that further archaeological assessment was not necessary. This study was supported through its initial stages by consultation with the Aboriginal community but did not proceed beyond the second stage of consultation due to the lack of Aboriginal heritage values in the study area and the project gaining approval from the Metropolitan LALC.

Eco Logical Australia, 2019. 120C Old Canterbury Road, Summer Hill – Aboriginal Heritage Due Diligence Assessment. Prepared for The Yard 120C Pty Ltd.

ELA were previously engaged by The Yard 120C Pty Ltd to prepare a due diligence assessment for the proposed rezoning and development of 120C Old Canterbury Road, Summer Hill, located adjacent to a portion of the current Central Link study area.

Desktop assessment of the site identified it as having been heavily developed upon for multiple purposes, with impacts caused by the construction of the light rail track adjacent the study area, the conversion of Iron Cove Creek into the concreted Hawthorne Canal and the use of the area as a carpark and storage yard during the 20<sup>th</sup> century. Geotechnical testing of the area confirmed this disturbance, with boreholes drilled during geotechnical testing revealing a subsurface profile comprised of fill (including a 20 mm thick asphaltic concrete pavement) over residual clays overlying sandstone bedrock.

Site inspection undertaken by ELA Archaeologists confirmed this heavy disturbance, with a majority of the study area comprised of levelled land made up of gravelly fill material and regrowth vegetation. The entire study area was been identified as having nil to low archaeological potential.

Mary Dallas Consulting 2017. Cooks River Aboriginal History. Prepared for the Cooks River Alliance

This history has been written as part of the Cooks River Catchment Aboriginal History Project that has been undertaken by MDCA on behalf of the Cooks River Alliance. It aimed to undertake archival and oral history to compile, catalogue and synthesise existing research and known sources of information about Aboriginal history within the Cooks River catchment, and then to conduct targeted research to push our knowledge further. It examined both archaeological and historical records to undertake comprehensive research into the long history of Aboriginal associations with the Cooks River catchment from the archaeological past and the oral and documentary history of more recent times and up to the present.

The project distilled the information into a detailed, readable Aboriginal history of the Cooks River catchment and assembled source materials and research in a manner that allows the development of resources targeted to a diverse range of users across different media.

### 3.3 Landscape Assessment

The study area is situated within the Cumberland subregion of the Sydney Basin bioregion. The geology, landforms, soils and vegetation typical of the Cumberland subregion are described in Table 4 below:

**Table 4: Summary of the Cumberland subregion (Source: Morgan 2001)**

Subregion	Geology	Characteristic Landforms	Typical Soils	Vegetation
Cumberland	Triassic Wianamatta groups shales and sandstones. A downwarped block on the coastal side of the Lapstone monocline. Intruded by a small number of volcanic vents and partly covered by Tertiary river gravels and sands. Quaternary alluvium along the mains streams.	Low rolling hills and wide valleys in a rain shadow area below the Blue Mountains. At least three terrace levels evident in the gravel splays. Volcanics from low hills in the shale landscapes. Swamps and lagoons on the floodplain of the Nepean River.	Red and yellow texture contrast soils on slopes, becoming harsher and sometimes affected by salt in tributary valley floors. Pedal uniform red to brown clays on volcanics. Poor uniform stony soils, often with texture contrast profiles on older gravels, high quality loams on modern floodplain alluvium.	Grey box, forest red gum, narrow-leaved ironbark woodland with some spotted gum on the shale hills. Hard-leaved scribbly gum, rough-barked apple and old man banksia on alluvial sands and gravels. Broad-leaved apple, cabbage gum and forest red gum with abundant swamp oak on river flats. Tall spike rush, and juncus with Parramatta red gum in lagoons and swamps.

Due to its size, several soil landscapes occur within the study area, including the Blacktown Residual (REbt) soil landscape, the Birrong fluvial soil landscape (FLbg) and the Gymea erosional soil landscape (ERgy).

Blacktown soils consist of shallow to moderately deep soils with a relatively low susceptibility to erosion. Blacktown soils are conducive to artefact survivability, however the acidity within in these soils quickly removes organics. In addition, the tendency of these soils to deflate often result in a temporal collapse where archaeological objects from multiple time periods can accumulate within a single layer.

Birrong soils occur within the floodplains of Wianamatta Group shales on the Cumberland Lowlands, and typically consist of deep, yellow podzolic soils and heavy alluvial deposits. Due to the fluvial nature of the landscape these soils are situated in, soils are loose are highly prone to erosion, reducing chance for archaeological deposits within this landscape to retain stratigraphic integrity.

Gymea soils occur atop Hawkesbury sandstone, on undulating rises and low hills. Soils within this landscape consist of shallow to moderately deep earthy siliceous sands, their siliceous nature due to the breakdown and inclusion of underlying Hawkesbury sandstone. Similar to Birrong soils, Gymea soils are highly prone to erosion, reducing chance for archaeological deposits within this landscape to retain stratigraphic integrity (Bannerman and Hazelton 1990).

There are no natural watercourses inside of or within 200 m of the study area. The waterway depicted within the Central Link study area (Figure 3) comprises the Hawthorne Canal, a former creek line that was channelised in the late 19<sup>th</sup> century and is now a storm water drain. There is also an unmapped and unlined drainage channel that approximately follows an ephemeral creek line within the corridor to the east of Hercules Street. The drainage channel is piped below Jack Shanahan Reserve. As advised by Inner

West Council, this area has also had significant disturbance during the construction of the goods line and then the light rail construction.

An archaeologically sensitive landscape is an area that has the potential for archaeological material to be present within it. According to the *Due Diligence Code of Practice* (DECCW 2010a), archaeologically sensitive landscapes can include areas:

- Within 200m of waters
- Located within a sand dune system
- Located on a ridge top, ridge line, headland
- Located within 200m below or above a cliff face
- Within 20m of or in a cave, rock shelter, or a cave mouth
- Is on land that is not disturbed land

The Due Diligence Code of Practice (DECCW 2010a:18) defines disturbed land as areas that have any land that:

*“Has been the subject of a human activity that has changed the land’s surface, being changes that remain clear and observable. Examples include ploughing, construction of rural infrastructure (such as dams and fences), construction of roads, trails and tracks (including fire trails and tracks and walking tracks), clearing vegetation, construction of buildings and the erection of other structures, construction or installation of utilities and other similar services (such as above or below ground electrical infrastructure, water or sewerage pipelines, stormwater drainage and other similar infrastructure) and construction of earthworks.”*

### 3.4 Predictive Model

Understanding of the life of Aboriginal groups within the Inner West region prior to European occupation of the area is not well understood, due to the lack of surviving archaeological and historical records within the area. However, what can be inferred from archaeological and environmental data is that a major focal point of Aboriginal life and activities within the Inner West region was the Cooks River and its tributaries. Shell midden sites and other marine animal remains that have survived modern development in the area reflect the importance of riverine resources to inland Aboriginal groups living within the Cumberland Plain, with the Cooks River serving as the primary source of fresh water and marine resources in the Inner West region.

The Aboriginal groups making up the areas containing and surrounding the Cooks River consisted of the Wangal, Gadigal and Gameygal clans, with intercommunication and interrelationships between these groups being common.

Illustrations by European settlers depicting Aboriginal groups living within the Inner West region provide information regarding their lifestyle, culture and technologies. Imagery depicting bark canoes, trees cut with toe holds to enable the hunting of possums and temporary bark shelters give an idea of the variety of ways Aboriginal groups took advantage of the abundant resources present in the area prior to and in the early stages of European settlement of the Sydney Basin (Irish 2017).



Based on the material evidence and range of archaeological sites across the region, it is clear that Aboriginal people have been utilising the land and resources within the Sydney region for thousands of years. The predictive model outlined in Table 5 below has been developed for the study area based on the AHIMS search results, landscape assessment, and regional and local Aboriginal archaeological context outlined above.

**Table 5: Predictive model**

Site Type	Description	Likelihood to occur
Open camp sites/stone artefact scatters/isolated finds	Open camp sites represent past Aboriginal subsistence and stone knapping activities and include archaeological remains such as stone artefacts and hearths. This site type usually appears as surface scatters of stone artefacts in areas where vegetation is limited and ground surface visibility increases.  Isolated finds may represent a single item discard event or be the result of limited stone knapping activity. The presence of such isolated artefacts may indicate the presence of a more extensive, in situ buried archaeological deposit, or a larger deposit obscured by low ground visibility.	Low – due to the heavy level of ground disturbance present in the study area and a lack of archaeologically sensitive features, it is unlikely that this site type will occur.
Potential Archaeological Deposit	Potential Archaeological Deposits (or PADs) are areas where there is no surface expression of stone artefacts, but due to a landscape feature there is a strong likelihood that the area will contain buried deposits of stone artefacts.	Low - due to the heavy level of ground disturbance present in the study area and a lack of archaeologically sensitive features, it is unlikely that this site type will occur.
Scarred or carved trees	Tree bark was utilised by Aboriginal people for various purposes, including the construction of shelters (huts), canoes, paddles, shields, baskets and bowls, fishing lines, cloaks, torches and bedding, as well as being beaten into fibre for string bags or ornaments (sources cited in Attenbrow 2002: 113). Trees may also have been scarred in order to gain access to food resources (e.g. cutting toe-holds so as to climb the tree and catch possums or birds), or to mark locations such as tribal territories. Such scars, when they occur, are typically described as scarred trees.	Low – the study area has been cleared of mature growth vegetation, making it unlikely for this site type to occur.

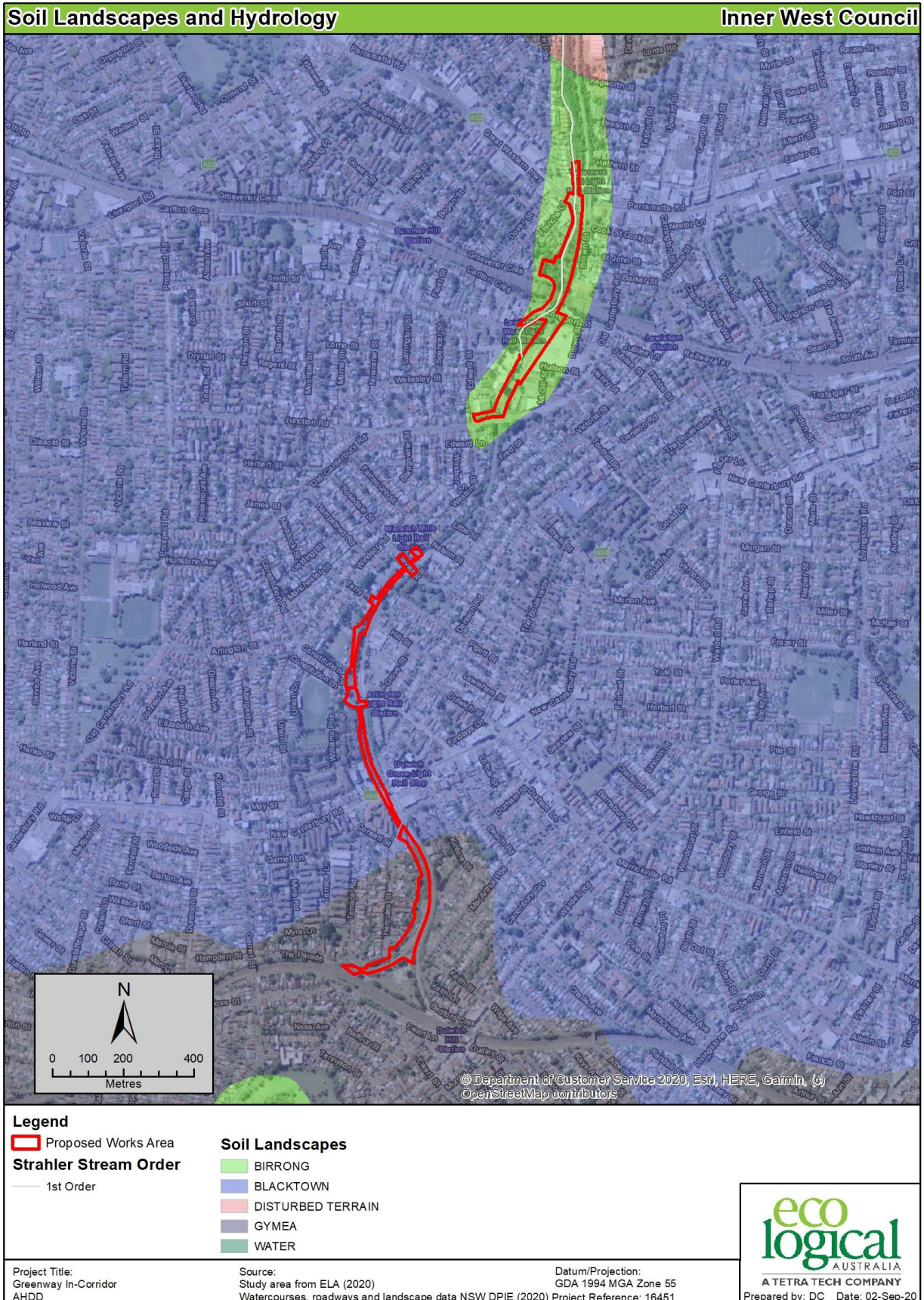


Figure 3: Soil landscapes and hydrology of the study area

### 3.5 Visual Inspection

A site visit was conducted by Karyn McLeod (ELA Principal Heritage Consultant) on Friday 4 September 2020. Visual inspection aimed to identify Aboriginal objects if present and assess the archaeological potential of the study area.

The study area comprises bitumen bike/walking tracks and undeveloped land on either side of the Hawthorne Canal and the light rail corridor. The study area is located in densely developed urban areas and is between 30 m wide at its narrowest point and 105 m at the widest point at Cadigal Reserve. Adjoining development comprises residential houses and apartments, parks, major and minor roads, light rail stations and infrastructure corridors. Sections of the study area, particularly the northern section, slope steeply to the canal and are planted with native species as a result of the various bush care projects since the 1970s. In the southern part of the study area the light rail line is constructed in steep cuts for the majority of its length between Constitution Road and Hercules Street and then on a filled embankment south of Hercules Street with flat areas adjacent to Allied Flour Mills.

The study area is highly disturbed by the construction of multiple brick works between the 1850s to 1890s, the Hawthorne Canal in the 1880s, residential subdivision and development of roads from the 1870s, the construction of the Rozelle goods line between 1910-1916 and the recent Light Rail development.



Figure 4: Shared path near Taverners Hill light rail station



Figure 5: Hawthorne Canal near the northern end of the study area



Figure 6: Train infrastructure, Cadigal Park



Figure 7: Study area Cadigal Park



Figure 8: Waratah Flour Mills and light rail line, study area to the right



Figure 9: Hawthorn Canal and study area adjacent to Hoskins Park



Figure 10: Study area at West Lewisham



Figure 11: Study area adjacent to the Allies Flour Mills

### 3.6 Impact Avoidance Assessment

The proposed shared-used path and associated landscaping will require earthworks that will directly impact the ground surface of the site. The visual inspection did not identify any previously unregistered archaeological sites and that the entire area has been subject to heavy urbanisation and ground disturbance. Based on these ground disturbances and an absence of archaeologically sensitive features, there is low potential for Aboriginal objects to occur.

## 4. Statutory Requirements

Aboriginal objects and places in New South Wales are afforded protection under the NPW Act irrespective of whether or not they are registered on AHIMS. Strict penalties apply for engaging in activities that inflict harm to an Aboriginal cultural heritage site or object without consent for activities under the NPW Act. Under Part 6 of the NPW Act, consent or authorisation for harmful activities may be given under an AHIP. Should harm be inflicted upon an Aboriginal site or object, there are five defences:

- The harm was authorised under an AHIP;
- The proponent exercised due diligence prior to causing the harm and is able to demonstrate this;
- The harm was caused during activities that complied with a code of practice as described in Part 6A of the *National Parks and Wildlife Regulation 2009* (New South Wales). For example, undertaking archaeological test excavations in accordance with the *Code of Practice for Archaeological Investigation of Aboriginal Objects in New South Wales* (DECCW 2010c);
- The harm was caused as part of a low-impact activity or omission under the regulation, and the proponent was not aware of the presence of Aboriginal cultural material; or
- The harm caused during activities that are exempted under Section 87A of the NPW Act. For example, emergency firefighting or bushfire hazard reduction work, as defined by the *Rural Fires Act 1997* (New South Wales).

To assess the requirement of an AHIP, Heritage NSW necessitates that an Aboriginal Cultural Heritage Assessment (ACHA) is prepared in accordance with the *Guide to Investigating, Assessing, and Reporting on Aboriginal Cultural Heritage in New South Wales* (OEH 2011) and the *Due Diligence Code of Practice for the Protection of Aboriginal Objects in New South Wales* (DECCW 2010a).

These two guides establish a set of guidelines to aid land users in being aware of how their activities could damage Aboriginal cultural heritage sites and advise Archaeologists of the requirements that must be followed during the investigation of Aboriginal cultural heritage sites. If an AHIP is required, Heritage NSW necessitates that it is further supported by a copy of the approval for the development or infrastructure issued under, in this case, Part 5 of the *Environmental Planning and Assessment Act 1979* (EP&A Act) in the form of a Review of Environmental Factors (REF).

## 5. Conclusions and Recommendations

### 5.1 Conclusion

The purpose of this Aboriginal Heritage Due Diligence Assessment is to identify if there are registered Aboriginal sites and/or sensitive landforms which may indicate the presence of Aboriginal sites and may therefore require further assessment and approval under Part 6 of the NPW Act.

ELA has undertaken an extensive search of the AHIMS database maintained by Heritage NSW and a review of available background reports discussing past Aboriginal heritage assessment that have been undertaken within the Inner West area.

The AHIMS data has been mapped over on the preliminary development area (Figure 2) showing zero AHIMS sites in the study area or within 1 km. The lack of Aboriginal heritage assessments of the Inner West area reflects the low survival rate of Aboriginal sites in the region due to the early and ongoing heavy disturbance and urbanisation of the area.

A site inspection undertaken by ELA Principal Consultant Karyn McLeod on Friday 4 September 2020 confirmed this heavy disturbance, with the study area comprising bitumen bike/walking tracks, the Hawthorne Canal and the light rail corridor. The study area is located in densely developed urban areas and no areas of archaeological potential were identified.

Due to the above assessment, Aboriginal objects are unlikely to be present in the study area and the proposed works will not impact sites and objects. As such, no further assessment and mitigation measures will be required to ensure no harm will occur.

### 5.2 Recommendations

Based on the findings of this due diligence and the requirement of the NPW Act the following is recommended.

#### ***Recommendation 1 - General measures***

Aboriginal objects are protected under the NPW Act regardless if they are registered on AHIMS or not. If suspected Aboriginal objects, such as stone artefacts are located during future works, works must cease in the affected area and an archaeologist called in to assess the finds. If the finds are found to be Aboriginal objects, Heritage NSW must be notified under section 89A of the NPW Act. Appropriate management and avoidance or approval under a section 90 AHIP should then be sought if Aboriginal objects are to be moved or harmed.

In the extremely unlikely event that human remains are found, works should immediately cease, and the NSW Police should be contacted. If the remains are suspected to be Aboriginal, Heritage NSW may also be contacted at this time to assist in determining appropriate management.

## References

Archaeological and Heritage Management Solutions Pty Ltd, 2008. *Allied Flour Mills Site – Aboriginal Heritage Impact Assessment*. Prepared for EG Funds Management.

Australian Heritage Commission, 2002. *Ask First: A Guide to Respecting Indigenous Heritage Places and Values*.

Bannerman, S.M., and P.A. Hazelton, 1990. *Soil Landscapes of the Penrith 1:100,000 Sheet*. Sydney: Soil Conservation Service of NSW.

Brown, S. 2008. 'Mute or mutable? Archaeological significance, research, and cultural heritage management in Australia'. *Australian Archaeology*, 67:19-30.

*The Burra Charter: The Australia ICOMOS Charter for Places of Cultural Significance 2013*.

Byrne, D., Brayshaw, H. and Ireland, T. 2003. *Social Significance: A Discussion Paper*. Hurstville, Australia: New South Wales National Parks and Wildlife Service. The Department of Climate Change and Water, 2010a. *Due Diligence Code of Practice for the Protection of Aboriginal Objects in New South Wales*.

Irish, P., 2017. *Aboriginal History Along The Cooks River*. Prepared for the Cooks River Alliance.

CSJ Consulting, 2017. *Construction Heritage Management Plan: M4 East – Design and Construction*. Prepared for WestConnex.

The Department of Environment, Climate Change and Water, 2010a. *Due Diligence Code of Practice for the Protection of Aboriginal Objects in New South Wales*.

The Department of Climate Change and Water, 2010c. *Code of Practice for Archaeological Investigation of Aboriginal Objects in New South Wales*

Eco Logical Australia, 2019. *120C Old Canterbury Road, Summer Hill – Aboriginal Heritage Due Diligence Assessment*. Prepared for The Yard 120C Pty Ltd.

Morgan, G. 2001. *Delineation and description of the Eastern Environmental Subregions (provinces) in New South Wales Study*. Hurstville: NSW NPWS.

New South Wales Heritage Office. 2015. *Assessing Heritage Significance*.

The Office of Environment and Heritage, 2011. *Guide to Investigating, Assessing, and Reporting on Aboriginal Cultural Heritage in New South Wales*.

## Appendix A AHIMS Search Results



Office of Environment & Heritage

### AHIMS Web Services (AWS) Extensive search - Site list report

Your Ref/PO Number : 16451a

Client Service ID : 524799

SiteID	SiteName	Datum	Zone	Easting	Northing	Context	Site Status	SiteFeatures	SiteTypes	Reports
45-6-2597	Wynyard St Midden	AGD	56	333469	6247920	Open site	Valid	Shell : -, Artefact : -	Midden	102494,10276 3,102765
	<u>Contact</u>									
45-6-2339	Haslams Ck 1	AGD	56	319810	6251690	Open site	Valid	Artefact : -	Open Camp Site	102196
	<u>Contact</u>									
45-6-2358	K1(same as site 45-6-2198)	AGD	56	329510	6244350	Open site	Deleted	Shell : -, Artefact : -	Midden	
	<u>Contact</u>									
45-6-2382	Goat Island 2	AGD	56	333100	6252480	Closed site	Valid	Artefact : -, Shell : -, Aboriginal Ceremony and Dreaming : -	1330,1331	
	<u>Contact</u>									
45-6-2278	Lilyfield Cave	GDA	56	330433	6250467	Closed site	Valid	Shell : -, Artefact : -, Potential Archaeological Deposit (PAD) : -	Shelter with Midden	102201
	<u>Contact</u>									
45-6-2299	First Government House	GDA	56	334612	6251612	Open site	Valid	Burial : -, Aboriginal Ceremony and Dreaming : -, Artefact :-	Burial/s, Historic Place	102494,10276 3,102765
	<u>Contact</u>									
45-6-2651	William St PAD	AGD	56	334800	6250220	Open site	Valid	Potential Archaeological Deposit (PAD) : -	4552	102494,10276 3,102765
	<u>Contact</u>									
45-6-2647	KENS Site 1	AGD	56	333750	6250785	Open site	Valid	Artefact : -, Potential Archaeological Deposit (PAD) : -	1589,1670	99857,100494, 102494,10276 3,102765
	<u>Contact</u>									
45-6-2676	Johnstons Creek	AGD	56	331100	6249100	Closed site	Valid	Art (Pigment or Engraved) : 2, Artefact : 5		102142,10276 3
	<u>Contact</u>									
45-6-2666	Wattle Street PAD 1	GDA	56	333200	6249602	Open site	Valid	Potential Archaeological Deposit (PAD) : -		102494,10276 3,102765
	<u>Contact</u>									
45-6-2671	Wolli Creek 3	AGD	56	327550	6243825	Open site	Valid	Artefact : 3	1738	
	<u>Contact</u>									

Report generated by AHIMS Web Service on 03/08/2020 for Declan Coman for the following area at Datum :GDA, Zone : 56, Eastings : 319762 - 336451, Northings : 6242354 - 6252853 with a Buffer of 50 meters. Additional Info : ADD. Number of Aboriginal sites and Aboriginal objects found is 114

This information is not guaranteed to be free from error omission. Office of Environment and Heritage (NSW) and its employees disclaim liability for any act done or omission made on the information and consequences of such acts or omission.





**AHIMS Web Services (AWS)**  
Extensive search - Site list report

Your Ref/PO Number : 16451a

Client Service ID : 524799

SiteID	SiteName	Datum	Zone	Easting	Northing	Context	Site Status	SiteFeatures	SiteTypes	Reports
45-6-2663	Mountain Street Ultimo	GDA	56	333199	6249418	Open site	Valid	Artefact : -, Potential Archaeological Deposit (PAD) : -		102494,10276 3,102765
	<u>Contact</u>	<u>Recorders</u>	Mary Dallas Consulting Archaeologists (MDCA),Mr.Matthew Kelleher,Kelleher Nigh							
45-6-2680	Broadway Picture Theatre PAD 1	AGD	56	333150	6249000	Open site	Valid	Potential Archaeological Deposit (PAD) : -	1719	102142,10249 4,102763,1027 65
	<u>Contact</u>	<u>Recorders</u>	Jim Wheeler							
45-6-2737	Tempe House 1	AGD	56	329230	6243930	Open site	Partially Destroyed	Artefact : -, Potential Archaeological Deposit (PAD) : -		99680,100447, 102150,10345 2
	<u>Contact</u>	<u>Recorders</u>	Doctor,Jo McDonald							
45-6-2843	Canada Bay Midden	AGD	56	329550	6251900	Closed site	Valid	Shell : -		100436
	<u>Contact</u> T Russell	<u>Recorders</u>	Kate Sullivan							
45-6-2838	420 George Street PAD	AGD	56	334080	6250670	Open site	Not a Site	Potential Archaeological Deposit (PAD) : -		102494,10276 3,102765
	<u>Contact</u>	<u>Recorders</u>	Doctor,Tim Owen							
45-6-2960	Jackson Landing Shelter	GDA	56	332442	6250870	Closed site	Valid	Potential Archaeological Deposit (PAD) : -		102494,10276 3,102765
	<u>Contact</u>	<u>Recorders</u>	Mary Dallas Consulting Archaeologists (MDCA),Mr.Paul Irish							
45-6-2979	UTS PAD 1 14-28 Ultimo Rd Syd	GDA	56	333650	6249590	Open site	Valid	Potential Archaeological Deposit (PAD) : -		102494,10276 3,102765
	<u>Contact</u>	<u>Recorders</u>	Dominic Steele Archaeological Consulting,Mr.Dominic Steele							
45-6-3748	Sydenham to Bankstown PAD02 (S2B PAD02)	GDA	56	320305	6244456	Open site	Valid	Potential Archaeological Deposit (PAD) : -		
	<u>Contact</u>	<u>Recorders</u>	Artefact - Cultural Heritage Management - Pyrmont,Ms.Alyce Haast							
45-6-3749	Sydenham to Bankstown PAD 01 (S2B PAD01)	GDA	56	323514	6245442	Open site	Valid	Potential Archaeological Deposit (PAD) : -		
	<u>Contact</u>	<u>Recorders</u>	Artefact - Cultural Heritage Management - Pyrmont,Ms.Alyce Haast							
45-6-3729	UNSW Sand Body Area of Sensitivity	GDA	56	336190	6245480	Open site	Valid	Potential Archaeological Deposit (PAD) : -		
	<u>Contact</u>	<u>Recorders</u>	Ms.Fenella Atkinson,Coast History & Heritage							
45-6-3704	Tay Reserve Artefact	GDA	56	335723	6247268	Open site	Valid	Artefact : -		
	<u>Contact</u>	<u>Recorders</u>	Artefact - Cultural Heritage Management - Pyrmont,Mr.Michael Lever							

Report generated by AHIMS Web Service on 03/08/2020 for Declan Coman for the following area at Datum :GDA, Zone : 56, Eastings : 319762 - 336451, Northings : 6242354 - 6252853 with a Buffer of 50 meters. Additional Info : ADD. Number of Aboriginal sites and Aboriginal objects found is 114  
This information is not guaranteed to be free from error omission. Office of Environment and Heritage (NSW) and its employees disclaim liability for any act done or omission made on the information and consequences of such acts or omission.



Office of Environment & Heritage

**AHIMS Web Services (AWS)**  
Extensive search - Site list report

Your Ref/PO Number : 16451a  
Client Service ID : 524799

SiteID	SiteName	Datum	Zone	Easting	Northing	Context	Site Status	SiteFeatures	SiteTypes	Reports
45-6-3705	Kent and Erskine St PAD	GDA	56	333876	6251145	Open site	Valid	Potential Archaeological Deposit (PAD) :-		
	<u>Contact</u>									
45-6-3693	Callan Park Scared Tree	GDA	56	330004	6251406	Open site	Valid	Modified Tree (Carved or Scarred) :-		
	<u>Contact</u>									
45-6-3694	Callan Park Waterhole	GDA	56	330060	6251377	Open site	Valid	Water Hole :-		
	<u>Contact</u>									
45-6-3695	Callan Park Grinding Groove (possible)	GDA	56	330080	6251407	Open site	Valid	Grinding Groove :-		
	<u>Contact</u>									
45-6-3696	Callan Park Cultural Tree	GDA	56	330061	6251398	Open site	Valid	Aboriginal Resource and Gathering :-		
	<u>Contact</u>									
45-6-3762	Harrington IFS01	GDA	56	334178	6251888	Open site	Destroyed	Artefact : 1		
	<u>Contact</u>									
45-6-3697	SR-OVRH-1	GDA	56	326178	6243095	Closed site	Valid	Potential Archaeological Deposit (PAD) :-		
	<u>Contact</u>									
45-6-3698	WC-OVRH-1	GDA	56	325918	6243345	Closed site	Valid	Potential Archaeological Deposit (PAD) :-		
	<u>Contact</u>									
45-6-3699	WC-OVRH-2	GDA	56	326969	6244040	Closed site	Valid	Potential Archaeological Deposit (PAD) :-		
	<u>Contact</u>									
45-6-3700	WC-OVRH-4	GDA	56	327571	6244109	Closed site	Valid	Potential Archaeological Deposit (PAD) :-		
	<u>Contact</u>									
45-6-3701	WC-OVRH-3	GDA	56	327472	6244023	Closed site	Valid	Potential Archaeological Deposit (PAD) :-		
	<u>Contact</u>									
45-6-0519	Moores Wharf	AGD	56	333600	6252200	Open site	Valid	Artefact :-	Open Camp Site	808
	<u>Contact</u>									

Report generated by AHIMS Web Service on 03/08/2020 for Declan Coman for the following area at Datum :GDA, Zone : 56, Eastings : 319762 - 336451, Northings : 6242354 - 6252853 with a Buffer of 50 meters. Additional Info : ADD. Number of Aboriginal sites and Aboriginal objects found is 114  
This information is not guaranteed to be free from error omission. Office of Environment and Heritage (NSW) and its employees disclaim liability for any act done or omission made on the information and consequences of such acts or omission.



## AHIMS Web Services (AWS) Extensive search - Site list report

Your Ref/PO Number : 16451a

Client Service ID : 524799

SiteID	SiteName	Datum	Zone	Easting	Northing	Context	Site Status	SiteFeatures	SiteTypes	Reports
45-6-2145	France/Emile Bay, Concord. <a href="#">Contact</a>	AGD	56	325900	6252400	Open site	Valid	Shell : -, Artefact : -	Midden	1809,1911
		<a href="#">Recorders</a>	Mr.R Taplin					<a href="#">Permits</a>		
45-6-0262	Rodd Point;Rodd Park; <a href="#">Contact</a>	AGD	56	328700	6251000	Open site	Valid	Shell : -, Artefact : -	Midden	2047
		<a href="#">Recorders</a>	Val Attenbrow,Michael Guider					<a href="#">Permits</a>		
45-6-2547	Nanny Goat Hill 1;NGH 1; <a href="#">Contact</a>	AGD	56	328700	6244300	Open site	Valid	Artefact : -	Open Camp Site	
		<a href="#">Recorders</a>	Michael Guider					<a href="#">Permits</a>		
45-6-0283	Rozelle Hospital 1;Rozelle Ho5555; <a href="#">Contact</a>	AGD	56	329760	6251360	Closed site	Valid	Shell : -, Artefact : -	Shelter with Midden	
		<a href="#">Recorders</a>	Val Attenbrow					<a href="#">Permits</a>		
45-6-0615	Undercliffe Road <a href="#">Contact</a>	AGD	56	328500	6244500	Closed site	Valid	Shell : -, Artefact : -, Art (Pigment or Engraved) : -	Midden,Shelter with Art	99514
		<a href="#">Recorders</a>	Ms.Bronwyn Conyers,D Burns					<a href="#">Permits</a>		
45-6-1900	White Horse Pt. <a href="#">Contact</a>	AGD	56	330800	6252420	Open site	Valid	Shell : -, Artefact : -	Midden	
		<a href="#">Recorders</a>	Michael Guider					<a href="#">Permits</a>		
45-6-1481	Rozelle Hospital 3 <a href="#">Contact</a>	AGD	56	329902	6251129	Open site	Valid	Shell : -, Artefact : -	Midden	
		<a href="#">Recorders</a>	Val Attenbrow,Michael Guider					<a href="#">Permits</a>		
45-6-2555	Rodd Island <a href="#">Contact</a>	AGD	56	329080	6251280	Open site	Valid	Shell : -, Artefact : -	Midden	
		<a href="#">Recorders</a>	Michael Guider					<a href="#">Permits</a>		
45-6-0618	Rozelle Hospital 2, Rozelle Hospital 1 <a href="#">Contact</a>	AGD	56	329650	6251330	Open site	Valid	Shell : -, Artefact : -, Art (Pigment or Engraved) : -	Midden,Rock Engraving	
		<a href="#">Recorders</a>	Val Attenbrow,Michael Guider					<a href="#">Permits</a>		
45-6-0647	Centennial Park <a href="#">Contact</a>	AGD	56	336273	6247961	Open site	Valid	Art (Pigment or Engraved) : -	Rock Engraving	
		<a href="#">Recorders</a>	ASRSYS					<a href="#">Permits</a>		
45-6-2142	Hen & Chicken Bay, Five Dock; <a href="#">Contact</a>	AGD	56	326200	6251250	Open site	Valid	Shell : -, Artefact : -	Midden	
		<a href="#">Recorders</a>	Mr.R Taplin					<a href="#">Permits</a>		
45-6-2414	Wolli_Creek 1.6; <a href="#">Contact</a>	AGD	56	326280	6243580	Closed site	Valid	Artefact : -	Shelter with Deposit	1452
		<a href="#">Recorders</a>	Tranby College					<a href="#">Permits</a>		
45-6-2415	Wolli_Creek 1.4; <a href="#">Contact</a>	AGD	56	325740	6243270	Closed site	Valid	Artefact : -	Shelter with Deposit	1452
		<a href="#">Recorders</a>	Tranby College					<a href="#">Permits</a>		
45-6-1142	Abbotsford;Kangaroo Feet Cave; <a href="#">Contact</a>	AGD	56	326670	6252712	Closed site	Valid	Art (Pigment or Engraved) : -	Shelter with Art	
		<a href="#">Recorders</a>	ASRSYS					<a href="#">Permits</a>		

Report generated by AHIMS Web Service on 03/08/2020 for Declan Coman for the following area at Datum :GDA, Zone : 56, Eastings : 319762 - 336451, Northings : 6242354 - 6252853 with a Buffer of 50 meters. Additional Info : ADD. Number of Aboriginal sites and Aboriginal objects found is 114

This information is not guaranteed to be free from error omission. Office of Environment and Heritage (NSW) and its employees disclaim liability for any act done or omission made on the information and consequences of such acts or omission.



## AHIMS Web Services (AWS) Extensive search - Site list report

Your Ref/PO Number : 16451a  
Client Service ID : 524799

SiteID	SiteName	Datum	Zone	Easting	Northing	Context	Site Status	SiteFeatures	SiteTypes	Reports
45-6-2564	Wolli Creek 2.5	AGD	56	327250	6243760	Closed site	Valid	Shell : -, Artefact : -	Shelter with Midden	
	<a href="#">Contact</a>									
	<a href="#">Recorders</a>									
45-6-2565	Wolli Creek 2.4	AGD	56	327010	6243900	Closed site	Valid	Artefact : -	Shelter with Deposit	
	<a href="#">Contact</a>									
	<a href="#">Recorders</a>									
45-6-2566	Wolli Creek 2.1	AGD	56	326960	6243880	Closed site	Valid	Artefact : -	Shelter with Deposit	
	<a href="#">Contact</a>									
	<a href="#">Recorders</a>									
45-6-2567	Wolli Creek	AGD	56	327250	6243760	Closed site	Valid	Shell : -, Artefact : -	Shelter with Midden	
	<a href="#">Contact</a>									
	<a href="#">Recorders</a>									
45-6-2568	Wolli Creek	AGD	56	327010	6244000	Closed site	Valid	Artefact : -	Shelter with Deposit	
	<a href="#">Contact</a>									
	<a href="#">Recorders</a>									
45-6-2580	Junction Lane	AGD	56	335070	6250410	Open site	Valid	Artefact : -	Open Camp Site	102494,10276 3,102765
	<a href="#">Contact</a>									
	<a href="#">Recorders</a>									
45-6-2581	Angel Place	GDA	56	334223	6251138	Open site	Valid	Artefact : -	Open Camp Site	97963,102494, 102763,10276 5
	<a href="#">Contact</a>									
	<a href="#">Recorders</a>									
45-6-2416	Wolli_Creek 1.3;	AGD	56	325840	6243370	Closed site	Valid	Shell : -, Artefact : -	Shelter with Midden	1452
	<a href="#">Contact</a>									
	<a href="#">Recorders</a>									
45-6-2417	Wolli_Creek 1.2;	AGD	56	325880	6243400	Closed site	Valid	Shell : -, Artefact : -	Shelter with Midden	1452
	<a href="#">Contact</a>									
	<a href="#">Recorders</a>									
45-6-2418	Wolli_Creek 1.1;	AGD	56	325880	6243400	Closed site	Valid	Artefact : -	Shelter with Deposit	1452
	<a href="#">Contact</a>									
	<a href="#">Recorders</a>									
45-6-2198	View Street	AGD	56	329500	6244350	Open site	Valid	Shell : -, Artefact : -	Midden	
	<a href="#">Contact</a>									
	<a href="#">Recorders</a>									
45-6-1934	Half Moon Bay Cave;	AGD	56	328990	6251690	Closed site	Valid	Shell : -, Artefact : -	Shelter with Midden	1330,1331
	<a href="#">Contact</a>									
	<a href="#">Recorders</a>									
45-6-1935	Sisters Bay Cave	AGD	56	329350	6251930	Closed site	Valid	Shell : -, Artefact : -	Shelter with Midden	
	<a href="#">Contact</a>									
	<a href="#">Recorders</a>									

Report generated by AHIMS Web Service on 03/08/2020 for Declan Coman for the following area at Datum :GDA, Zone : 56, Eastings : 319762 - 336451, Northings : 6242354 - 6252853 with a Buffer of 50 meters. Additional Info : ADD. Number of Aboriginal sites and Aboriginal objects found is 114  
This information is not guaranteed to be free from error omission. Office of Environment and Heritage (NSW) and its employees disclaim liability for any act done or omission made on the information and consequences of such acts or omission.



**AHIMS Web Services (AWS)**  
Extensive search - Site list report

Your Ref/PO Number : 16451a  
Client Service ID : 524799

SiteID	SiteName	Datum	Zone	Easting	Northing	Context	Site Status	SiteFeatures	SiteTypes	Reports
45-6-1936	Rodd Point Cave;	AGD	56	328730	6251010	Closed site	Valid	Shell : -, Artefact : -	Shelter with Midden	
	<a href="#">Contact</a>			<a href="#">Recorders</a>	Michael Guider			<a href="#">Permits</a>		
45-6-1939	MSB Tower;	GDA	56	333640	6252227	Open site	Destroyed	Art (Pigment or Engraved) : -	Rock Engraving	102763
	<a href="#">Contact</a>			<a href="#">Recorders</a>	Michael Guider			<a href="#">Permits</a>		
45-6-0751	Shea's Creek Dugong	GDA	56	331839	6245378	Open site	Destroyed	Artefact : -, Aboriginal Resource and Gathering : -, Non-Human Bone and Organic Material : -	Open Camp Site	
	<a href="#">Contact</a>			<a href="#">Recorders</a>	ASRSYS,AECOM Australia Pty Ltd - Sydney,Mr.Luke Kirkwood			<a href="#">Permits</a>		
45-6-1615	Bennelong Point	AGD	56	334800	6252100	Open site	Destroyed	Shell : -, Artefact : -	Midden	102763
	<a href="#">Contact</a>			<a href="#">Recorders</a>	ASRSYS			<a href="#">Permits</a>		
45-6-1496	Shea's Creek	AGD	56	331697	6245597	Open site	Not a Site	Shell : -, Artefact : -	Midden	30,591,940
	<a href="#">Contact</a>			<a href="#">Recorders</a>	ASRSYS			<a href="#">Permits</a>		
45-6-1954	Sisters Bay Cave 2	AGD	56	329510	6251920	Closed site	Valid	Shell : -, Artefact : -	Shelter with Midden	
	<a href="#">Contact</a>			<a href="#">Recorders</a>	Michael Guider			<a href="#">Permits</a>		
45-6-1955	Sisters Bay 3;	AGD	56	329370	6251750	Closed site	Valid	Shell : -, Artefact : -	Shelter with Midden	
	<a href="#">Contact</a>			<a href="#">Recorders</a>	Michael Guider			<a href="#">Permits</a>	3653,3690	
45-6-1957	Goat Island Cave;	AGD	56	333010	6252710	Closed site	Valid	Shell : -, Artefact : -	Shelter with Midden	
	<a href="#">Contact</a>			<a href="#">Recorders</a>	Michael Guider			<a href="#">Permits</a>		
45-6-1971	Rozelle Hospital 5, Rozelle Hospital 3	AGD	56	329740	6251360	Closed site	Valid	Shell : -, Artefact : -	Shelter with Midden	
	<a href="#">Contact</a>			<a href="#">Recorders</a>	Val Attenbrow,Michael Guider			<a href="#">Permits</a>		
45-6-1972	Rozelle Hospital 4	AGD	56	329690	6251360	Closed site	Valid	Shell : -, Artefact : -	Shelter with Midden	
	<a href="#">Contact</a>			<a href="#">Recorders</a>	Val Attenbrow,Michael Guider			<a href="#">Permits</a>		
45-6-1809	Birchgrove	AGD	56	331380	6252700	Closed site	Valid	Shell : -, Artefact : -, Art (Pigment or Engraved) : -	Midden,Shelter with Art	
	<a href="#">Contact</a>			<a href="#">Recorders</a>	Michael Guider			<a href="#">Permits</a>		
45-6-1853	Lilyvale	AGD	56	333950	6251600	Open site	Valid	Shell : -, Artefact : -	Midden	102763
	<a href="#">Contact</a>			<a href="#">Recorders</a>	Val Attenbrow,Andrew Ross			<a href="#">Permits</a>		

Report generated by AHIMS Web Service on 03/08/2020 for Declan Coman for the following area at Datum :GDA, Zone : 56, Eastings : 319762 - 336451, Northings : 6242354 - 6252853 with a Buffer of 50 meters. Additional Info : ADD. Number of Aboriginal sites and Aboriginal objects found is 114  
This information is not guaranteed to be free from error omission. Office of Environment and Heritage (NSW) and its employees disclaim liability for any act done or omission made on the information and consequences of such acts or omission.



Office of Environment & Heritage

**AHIMS Web Services (AWS)**  
Extensive search - Site list report

Your Ref/PO Number : 16451a

Client Service ID : 524799

SiteID	SiteName	Datum	Zone	Eastings	Northings	Context	Site Status	SiteFeatures	SiteTypes	Reports
45-6-0030	Dawes Point;Dawes Point Park;	GDA	56	334345	6252534	Open site	Destroyed	Art (Pigment or Engraved) : -	Rock Engraving	
	<u>Contact</u>	<u>Recorders</u>	Michael Guider					<u>Permits</u>		
45-6-2652	Ultimo PAD 1	GDA	56	333419	6249969	Open site	Valid	Potential Archaeological Deposit (PAD) : -		102494,10276 3,102765
	<u>Contact</u>	<u>Recorders</u>	Jim Wheeler,Mr.Matthew Kelleher,Kelleher Nightingale Consulting Pty Ltd (Generi					<u>Permits</u>	1598	
45-6-2654	Fraser Park PAD	AGD	56	330100	6245800	Open site	Valid	Potential Archaeological Deposit (PAD) : -		98669,104256, 104257
	<u>Contact</u>	<u>Recorders</u>	Navin Officer Heritage Consultants Pty Ltd					<u>Permits</u>	1639	
45-6-2687	Crown Street PAD 1	AGD	56	334950	6250300	Open site	Valid	Potential Archaeological Deposit (PAD) : -		102494,10276 3,102765
	<u>Contact</u>	<u>Recorders</u>	Dominic Steele Archaeological Consulting					<u>Permits</u>	2017	
45-6-2742	171-193 Gloucester Street PAD	AGD	56	333926	6251461	Open site	Valid	Potential Archaeological Deposit (PAD) : -		102763
	<u>Contact</u>	<u>Recorders</u>	Jim Wheeler					<u>Permits</u>	2143,2342,2766	
45-6-2745	University of Sydney Law Building PAD	AGD	56	332350	6248740	Open site	Valid	Potential Archaeological Deposit (PAD) : -		102201,10249 4,102763,1027 65
	<u>Contact</u>	<u>Recorders</u>	Doctor.Jo McDonald					<u>Permits</u>	2153,2320,2443	
45-6-2934	Yurong Cave	GDA	56	335595	6251900	Closed site	Valid	Art (Pigment or Engraved) : -		102763
	<u>Contact</u>	<u>Recorders</u>	Michael Guider,Mr.Paul Irish					<u>Permits</u>		
45-6-2935	Yurong 1	GDA	56	335555	6252020	Open site	Valid	Shell : 6		
	<u>Contact</u>	<u>Recorders</u>	Michael Guider,Mr.Paul Irish					<u>Permits</u>		
45-6-3071	445-473 Wattle Street PAD	GDA	56	333285	6249412	Open site	Valid	Potential Archaeological Deposit (PAD) : 1		
	<u>Contact</u>	<u>Recorders</u>	Biosis Pty Ltd - Sydney					<u>Permits</u>		
45-6-3081	200 George Street	GDA	56	334237	6251637	Open site	Not a Site	Potential Archaeological Deposit (PAD) : 1		103114
	<u>Contact</u>	<u>Recorders</u>	Ms.Sally MacLennan					<u>Permits</u>	3577,3934,4239	
45-6-2987	Poultry Market 1	GDA	56	333746	6249575	Open site	Valid	Artefact : 1		102494,10276 3
	<u>Contact</u>	<u>Recorders</u>	Ms.Samantha Higgs,Biosis Pty Ltd - Canberra					<u>Permits</u>	3506	

Report generated by AHIMS Web Service on 03/08/2020 for Declan Coman for the following area at Datum :GDA, Zone : 56, Eastings : 319762 - 336451, Northings : 6242354 - 6252853 with a Buffer of 50 meters. Additional Info : ADD. Number of Aboriginal sites and Aboriginal objects found is 114  
This information is not guaranteed to be free from error omission. Office of Environment and Heritage (NSW) and its employees disclaim liability for any act done or omission made on the information and consequences of such acts or omission.



**AHIMS Web Services (AWS)**  
Extensive search - Site list report

Your Ref/PO Number : 16451a  
Client Service ID : 524799

SiteID	SiteName	Datum	Zone	Easting	Northing	Context	Site Status	SiteFeatures	SiteTypes	Reports
45-6-3064	445-473 WATTLE ST PAD	GDA	56	333285	6249412	Open site	Valid	Potential Archaeological Deposit (PAD) : 1		102763
	<u>Contact</u>	<u>Recorders</u>	Biosis Pty Ltd - Sydney							
45-6-3155	Moore Park AS1	GDA	56	335613	6247909	Open site	Valid	Artefact : -		
	<u>Contact</u>	<u>Recorders</u>	Artefact - Cultural Heritage Management - Pyrmont,Artefact - Cultural Heritage Ma							
45-6-3502	Loftus PAD 01	GDA	56	334551	6251635	Open site	Valid	Potential Archaeological Deposit (PAD) : -	Permits 4019	
	<u>Contact</u>	<u>Recorders</u>	Artefact - Cultural Heritage Management - Pyrmont,Artefact - Cultural Heritage Ma							
45-6-3645	SFS-PAD	GDA	56	335846	6248721	Open site	Valid	Potential Archaeological Deposit (PAD) : 1	Permits 4292	
	<u>Contact</u>	<u>Recorders</u>	Miss.Sam Cooling,Curio Projects Pty Ltd							
45-6-3552	Smith Hogan and Spindlers Park Midden	GDA	56	331309	6249791	Open site	Not a Site	Shell : -, Burial : -		104371
	<u>Contact</u>	<u>Recorders</u>	Mr.Mark Simon							
45-6-3654	CRS AS 01 (Central Railway Station Artefact scatter 01)	GDA	56	334055	6249146	Open site	Valid	Artefact : -		
	<u>Contact</u>	<u>Recorders</u>	Artefact - Cultural Heritage Management - Pyrmont,Ms.Jennifer Norfolk							
45-6-3545	Elliot Reserve 1 (STRA-001)	GDA	56	323155	6247290	Open site	Valid	Artefact : 150		
	<u>Contact</u>	<u>Recorders</u>	Mr.Phil Hunt,Aboriginal Housing Office							
45-6-3546	Maria Reserve 1 (STRA-002)	GDA	56	322850	6242862	Open site	Valid	Artefact : 1		
	<u>Contact</u>	<u>Recorders</u>	Mr.Phil Hunt,Aboriginal Housing Office							
45-6-3547	St Annes Reserve 1 (STRA-003)	GDA	56	322145	6248135	Open site	Valid	Aboriginal Resource and Gathering : 150		
	<u>Contact</u>	<u>Recorders</u>	Mr.Phil Hunt,Aboriginal Heritage Office							
45-6-3446	71 Macquarie Street PAD	GDA	56	334663	6251783	Open site	Valid	Potential Archaeological Deposit (PAD) : -		
	<u>Contact</u>	<u>Recorders</u>	GML Heritage Pty Ltd + Context - Surry Hills,Ms.Jodi Cameron							
45-6-2629	Broadway 1	AGD	56	333060	6249100	Open site	Valid	Artefact : -		102494,10276 3,102765
	<u>Contact</u>	<u>Recorders</u>	Dominic Steele Archaeological Consulting							
45-6-2637	George street 1	AGD	56	333860	6249880	Open site	Valid	Artefact : -	Permits 1299	98238,102494, 102763,10276 5
	<u>Contact</u>	<u>Recorders</u>	Dominic Steele Archaeological Consulting							
45-6-0811	Goat Island;Parramatta River;	AGD	56	333150	6252650	Open site	Valid	Artefact : -, Shell : -	Midden,Open Camp Site	
	<u>Contact</u>	<u>Recorders</u>	Elizabeth Rich							

Report generated by AHIMS Web Service on 03/08/2020 for Declan Coman for the following area at Datum :GDA, Zone : 56, Eastings : 319762 - 336451, Northings : 6242354 - 6252853 with a Buffer of 50 meters. Additional Info : ADD. Number of Aboriginal sites and Aboriginal objects found is 114  
This information is not guaranteed to be free from error omission. Office of Environment and Heritage (NSW) and its employees disclaim liability for any act done or omission made on the information and consequences of such acts or omission.



**AHIMS Web Services (AWS)**  
Extensive search - Site list report

Your Ref/PO Number : 16451a  
Client Service ID : 524799

SiteID	SiteName	Datum	Zone	Easting	Northing	Context	Site Status	SiteFeatures	SiteTypes	Reports
45-6-2783	PAD Central Royal Botanic Gardens	AGD	56	334900	6251030	Open site	Valid	Potential Archaeological Deposit (PAD) : -		102494,10276 3,102765
	<u>Contact</u> T Russell							<u>Recorders</u> Haglund and Associates	<u>Permits</u> 2364	
45-6-2767	Tent Embassy	AGD	56	332680	6248680	Open site	Valid	Aboriginal Resource and Gathering : 1		102494,10276 3,102765
	<u>Contact</u> T Russell							<u>Recorders</u> Bill Lord	<u>Permits</u>	
45-6-2796	320-328 George St PAD	AGD	56	334100	6251050	Open site	Valid	Potential Archaeological Deposit (PAD) : -		102494,10276 3,102765
	<u>Contact</u> T Russell							<u>Recorders</u> Mr.Dominic Steele	<u>Permits</u> 2415	
45-6-2822	USYD: Central	AGD	56	332750	6248550	Open site	Valid	Artefact : -		100302,10249 4,102763,1027 65
	<u>Contact</u>							<u>Recorders</u> Jo McDonald Cultural Heritage Management see GML	<u>Permits</u> 2554	
45-6-3152	168-190 Day Street, Sydney PAD	GDA	56	333877	6250257	Open site	Not a Site	Potential Archaeological Deposit (PAD) : -		
	<u>Contact</u>							<u>Recorders</u> Mr.Josh Symons,Mr.Alex Timms	<u>Permits</u> 3789	
45-6-3116	Wynyard Walk PAD	GDA	56	333931	6251252	Open site	Destroyed	Potential Archaeological Deposit (PAD) : 1		
	<u>Contact</u>							<u>Recorders</u> GML Heritage Pty Ltd + Context - Surry Hills,GML Heritage Pty Ltd + Context - Surry	<u>Permits</u> 3670	
45-6-3217	Darling Central Midden	GDA	56	333530	6250101	Open site	Valid	Aboriginal Ceremony and Dreaming : 1, Artefact : 1, Shell : 1		
	<u>Contact</u>							<u>Recorders</u> Comber Consultants Pty Limited,Ms.Tory Stening	<u>Permits</u>	
45-6-3322	Timbrell Park Midden	GDA	56	327989	6250589	Open site	Valid	Shell : -		
	<u>Contact</u>							<u>Recorders</u> DPIE,Ms.Sam Higgs	<u>Permits</u>	
45-6-3324	RBG PAD 1	GDA	56	334802	6251224	Open site	Valid	Potential Archaeological Deposit (PAD) : 1		
	<u>Contact</u>							<u>Recorders</u> AMAC Group P/L,Mr.Benjamin Streat	<u>Permits</u>	
45-6-3325	RBG PAD 2	GDA	56	335212	6251494	Open site	Valid	Potential Archaeological Deposit (PAD) : 1		
	<u>Contact</u>							<u>Recorders</u> AMAC Group P/L,Mr.Benjamin Streat	<u>Permits</u>	
45-6-3327	RBG PAD 3	GDA	56	334957	6251832	Open site	Valid	Potential Archaeological Deposit (PAD) : 1		

Report generated by AHIMS Web Service on 03/08/2020 for Declan Coman for the following area at Datum :GDA, Zone : 56, Eastings : 319762 - 336451, Northings : 6242354 - 6252853 with a Buffer of 50 meters. Additional Info : ADD. Number of Aboriginal sites and Aboriginal objects found is 114  
This information is not guaranteed to be free from error omission. Office of Environment and Heritage (NSW) and its employees disclaim liability for any act done or omission made on the information and consequences of such acts or omission.





**AHIMS Web Services (AWS)**  
Extensive search - Site list report

Your Ref/PO Number : 16451a

Client Service ID : 524799

SiteID	SiteName	Datum	Zone	Easting	Northing	Context	Site Status	SiteFeatures	SiteTypes	Reports
	<a href="#">Contact</a>	<a href="#">Recorders</a>								
45-6-3245	DoncasterAve PAD	GDA	56	336037	6246916	Open site	Destroyed	Hearth : -, Potential Archaeological Deposit (PAD) :-		
	<a href="#">Contact</a>	<a href="#">Recorders</a>								
45-6-3246	RSY 1	GDA	56	336060	6242862	Open site	Partially Destroyed	Artefact :-	4188	
	<a href="#">Contact</a>	<a href="#">Recorders</a>								
45-6-3252	Wiley Park Scar Tree 1	GDA	56	321779	6244287	Open site	Valid	Modified Tree (Carved or Scarred) :-		
	<a href="#">Contact</a>	<a href="#">Recorders</a>								
45-6-3253	Wiley Park Scar Tree 2	GDA	56	321779	6244287	Open site	Valid	Modified Tree (Carved or Scarred) :-		
	<a href="#">Contact</a>	<a href="#">Recorders</a>								
45-6-3338	The Bays Precinct PAD02	GDA	56	332354	6250885	Open site	Valid	Potential Archaeological Deposit (PAD) :-		
	<a href="#">Contact</a>	<a href="#">Recorders</a>								
45-6-3339	The Bays Precinct PAD01	GDA	56	332779	6250555	Open site	Valid	Potential Archaeological Deposit (PAD) :-		
	<a href="#">Contact</a>	<a href="#">Recorders</a>								

Report generated by AHIMS Web Service on 03/08/2020 for Declan Coman for the following area at Datum :GDA, Zone : 56, Eastings : 319762 - 336451, Northings : 6242354 - 6252853 with a Buffer of 50 meters. Additional Info : ADD, Number of Aboriginal sites and Aboriginal objects found is 114  
This information is not guaranteed to be free from error omission. Office of Environment and Heritage (NSW) and its employees disclaim liability for any act done or omission made on the information and consequences of such acts or omission.

