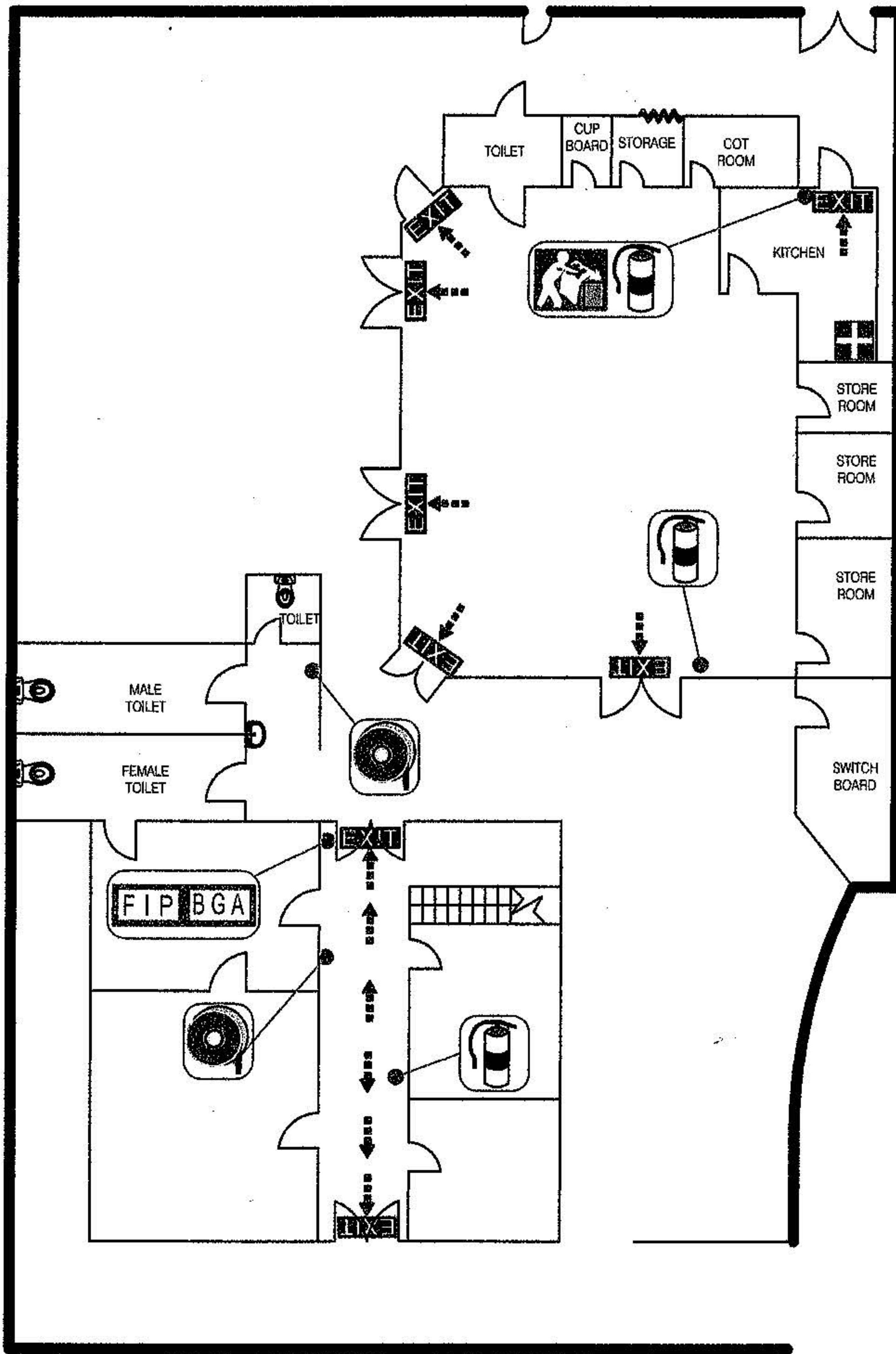


# EVACUATION DIAGRAM

NAME : ANNANDALE NEIGHBOURHOOD CENTRE  
 ADDRESS : 79 JOHNSTON STREET, ANNANDALE NSW  
 GROUND LEVEL



NOT TO SCALE

## EVACUATION PROCEDURE

### RACE PRINCIPLE

**STAGE 1:- REMOVE** people, occupants and staff away from the danger.

**STAGE 2:- ALERT** the Fire Service. Telephone "000". Notify Warden/chief Warden.

**STAGE 3:- CONTAIN** the danger (fire) where possible, where safe to do so and if trained to do so.

**STAGE 4:- EVACUATE:** Follow (chief) warden's instruction, close doors behind you and go to the assembly area.



FIRE EXTINGUISHER (CO2 TYPE)



FIRE BLANKET



FIRE HOSE REEL



FIRE INDICATOR PANEL



BREAK GLASS ALARM

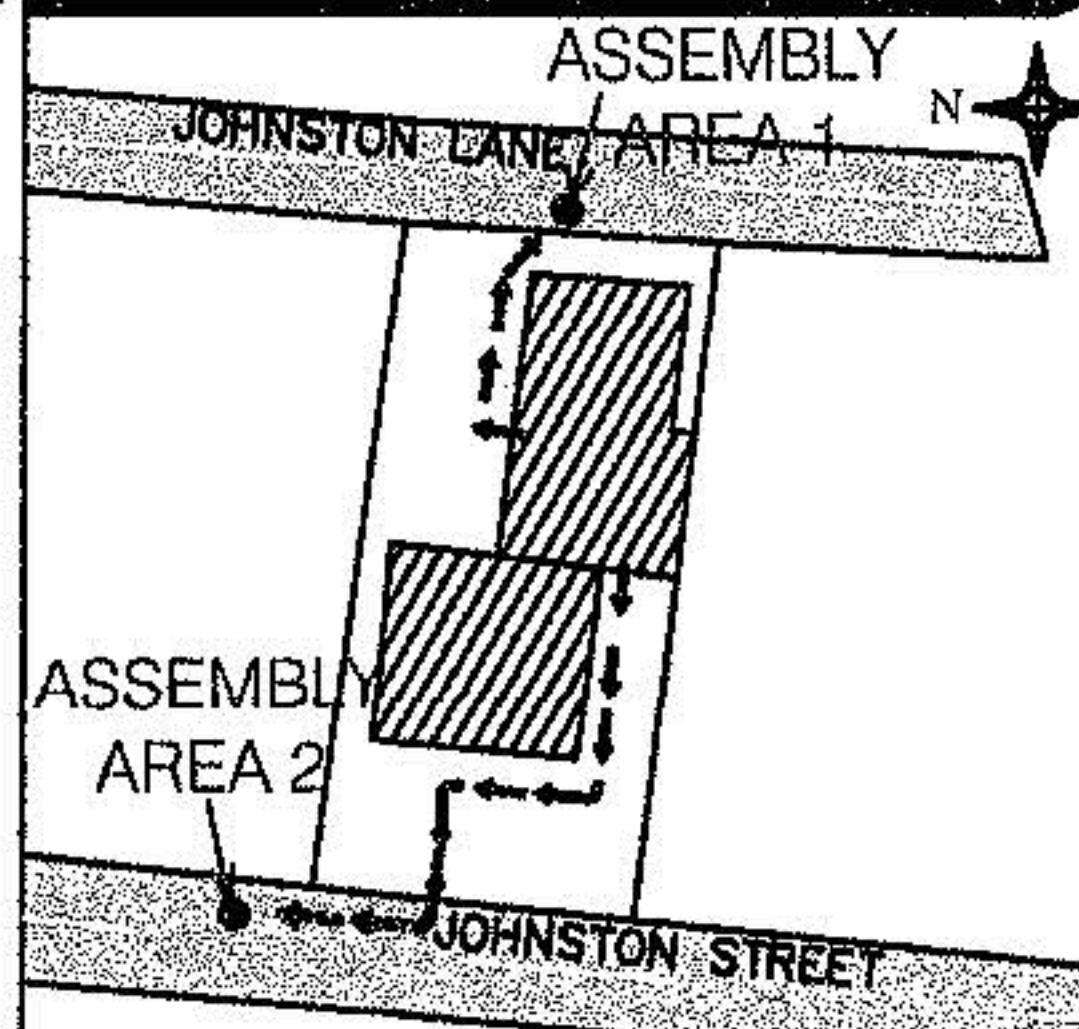


FIRST AID BOX



EXIT SIGN/ROUTE

## SITE LOCATION



Prepared by:  
 SPS Engineers Pty Ltd  
 Contact: 1800 799 147  
[www.spsservices.com.au](http://www.spsservices.com.au)  
 Date Prepared:  
 04-November-2013  
 Validity: 5 Years  
 To be printed in A3 size