

# PROPOSED PLANT SPECIES FOR RESPECTIVE AREAS

## SHELTERED COURTYARDS AND STAIRWAYS



Star Jasmine fixed to walls and structures



WALKING IRIS



BIRDS NEST



BROMELIADS



VARIETY OF GINGERS



BIRD OF PARADISE



GOLDEN CANE PALMS



HIBISCUS



GYMEA LILY



RAPHIS PALM



TREE FERNS



KING FERN



BANGALOWS & GYMEA LILIES



KENTIA PALMS

## INTERNAL PUBLIC SPACE



BLUEBERRY ASH



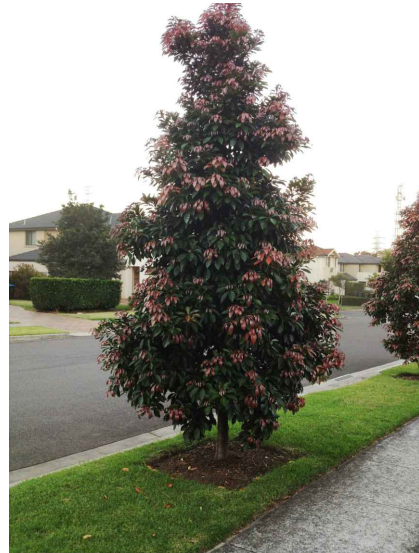
OLIVE TREES



LEMON SCENTED MYRTLE



MAGNOLIA LITTLE GEM



EUMUNDII QUANDONG



RAPHIOLEPIS



AGAVE



CARDBOARD PLANT



ALTERNANTHERA



VARIOUS HEDGES



LOMANDRA TANIKA



ISOLEPIS



WESTRINGIA



WALKING IRIS



COMBINATION OF VARIOUS  
GROUNDCOVER



PHILODENDRON XANADU

## PLANT SCHEDULE PUBLIC SPACES

Botanical name	Common name	mature spread
<b>LARGE TREES up to 25 m mature height</b>		
Angophora costata	Sydney Red Gum	15 m
Eucalyptus citriodora	Lemon Scented Gum	10 m
<b>SMALL/ MEDIUM FEATURE TREES up to 10 m mature height</b>		
Backhousia citriodora	Lemon Scented Myrtle	4-6 m
Dyopsis lutescens	Golden Cane Palm	4-6 m
Elaeocarpus reticulatus	Blueberry Ash	2-4 m
Elaeocarpus Eumundii	Eumundii Quandong	3 m
Howea forsteriana	Kentia Palm	3 m
Magnolia Little Gem / Exmouth	Evergreen Magnolia	3 m
Olea sp	Olive Tree	4-6 m
<b>SHRUBS/ PERENNIALS/ FEATURE PLANTS (up to 2 m mature height)</b>		
Agave attenuata	Agave	0.7 m
Alpinia caerulea	Redback Ginger	2 m
Alpinia Zerumbet 'variegata'	Variegated Ginger	2 m
Calathea zebrina	Zebra Plant	0.6 m
Carissa macrocarpa	Natal Plum	1 m
Crassula ovata	Jade Plant	0.6 m
Doranthus excelsa / palmeri	Gymea Lily	3 m
Philodendron Zanzibar	Dwarf Philodendron	1.5 m
Philodendron 'Roj Congo'	Red Philodendron	1.5 m
Rhapis Excelsa	Rhapis Palm	3 m
Rosmarinus officinalis	Rosemary	1 m
Rosmarinus prostratus	Prostrate Rosemary	0.5 m
Todea barbara	King Fern	3 m
Yucca elephantophyes 'Silver Star'	Yucca	3-4 m
Zamia furfuracea	Cardboard Plant	1.5 m
<b>GROUNDCOVERS/ CLIMBERS / HERBS</b>		
Bromeliads	Bromeliads	1 m
Dichondra repens 'Silver Fall'	Silver Dichondra	0.1 m
Liriope 'Evergreen Giant'	Liriope	0.3 m
Neomarrhaea gracilis	Walking Iris	0.5 m
Pandora jasminoides	Wonga Wonga Vine	3 m
Thymus citriodorus	Lemon thyme	0.3 m
Trachelospermum jasminoides	Star Jasmine	2 m
Trachelospermum tricolor	Tricolor jasmine	1 m
Tulbaghia violacea Silver Lace	Silver Wild Garlic	0.3 m

## PLANT SCHEDULE / ROOF TOP GARDENS

Botanical name	Common name	mature spread
<b>SMALL/ MEDIUM FEATURE TREES up to 8m mature height</b>		
Citrus limon Eureka	Lemon Tree	3m
Citrus hystrix	Kaffir Lime	3m
Dracena draco	Dragon Tree	3 m
Olea sp	Olive Tree	4-6 m
Hibiscus tiliaceus	Hibiscus	4 m
Magnolia 'Little Gem'	Evergreen magnolia	4-6 m
Plumeria acutifolia	Frangipani	6-8 m
<b>SHRUBS/ PERENNIALS/ FEATURE PLANTS (up to 2 m mature height)</b>		
Agave attenuata	Agave	0.7 m
Alcantara imperialis 'Rubra'	Alcantara bromeliad	1 m
Anigozanthos Big Orange	Kangaroo Paw	1.2 m
Aloe cultivars	Aloe	2 m
Banksia ericifolia Cherry Candles	Dwarf Heath Banksia	1 m
Baeckea virgata	Twiggy Heath Myrtle	0.5 m
Doranthus palmeri	Gymea Lily	1.8 m
Eriostemon myoporoides	Wax Flower	1.2 m
Carissa macrocarpa	Natal Plum	1 m
Crassula ovata	Jade Plant	0.6 m
Helichrysum petiolare	Licorice Plant	0.5 m
Metrosideros thomasi	NZ Christmas Bush	2.5 m
Strelitzia reginae / parvifolia	Bird of paradise	2 m
Yucca elephantophyes 'Silver Star'	Yucca	3-4 m
Zamia furfuracea	Cardboard Plant	1.5 m
<b>Herbs and edible shrubs</b>		
<b>GROUNDCOVERS/ CLIMBERS</b>		
Dichondra repens 'Silver Fall'	Silver Dichondra	0.1 m
Hardenbergia violacea	Happy Wanderer	1.5 m
Bougainvillea Scarlet Ohara	Bougainvillea	5 m

## PLANT SCHEDULE / STREETSCAPE

Botanical name	Common name	mature spread
<b>STREET TREES up to 20 m mature height</b>		
Lophostemon confertus	Brushbox	15 m
Tristanopsis laurina 'Luscious'	Water Gum	4 m
<b>SHRUBS AND FEATURE PLANTS up to 2-3 m height</b>		
Alternanthera 'Little Ruby'	Purple leaf Alternanthera	1 m
Doranthus excelsa	Gymea Lily	2 m
Furcraea foetida variegata	Giant Cabuya variegated leaf	2 m
Philodendron Xanadu	Dwarf Philodendron	1.5 m
Westringia fruticosa	Coastal Rosemary	1 m
<b>GROUNDCOVERS/ NATIVE GRASSES</b>		
Diets vegeta	Diets	1 m
Liriope	Liriope	0.3 m
Lomandra Tanika	Dwarf Lomandra	0.5 m
Neomarrhaea gracilis	Walking Iris	0.5 m

## PLANT MATERIAL

67 - 75 LORDS ROAD, LEICHHARDT

LANDSCAPE MASTER PLAN

PLANNING PROPOSAL  
SK 06 issue B September 2018

ARCHITECT

Stewart Hollenstein + MATTHEW PULLINGER ARCHITECT

CLIENT

PLATINO  
PROPERTIES



Umbaco  
LANDSCAPE ARCHITECTS  
Suite 104, 283 Alfred Street  
North Sydney NSW 2060  
T 02 9955 6772  
www.umbaco.com.au





SCALE 1 : 500 @ A1  
1: 1000 @ A3

0 5 10m 20m 40m

## DESIGN PRINCIPLES

- 1 Establish welcoming and legible public entry to the site
- 2 Provide shared vehicular and pedestrian access to contribute to the fine grain of the surrounding area
- 3 Establish generous green publicly accessible space for multifunctional use
- 4 Provide a comfortable family area
- 5 Provide secondary pedestrian connections with courtyard seating areas
- 6 Vehicular entry to basement carpark located above 1 in 100 year flood level

## PUBLIC REALM

- 7 Link secondary pedestrian connections to future possible pathway through Lambert Park site to Marion Station
- 8 Retain existing Brush Boxes where possible
- 9 Revegetate existing degraded bank with native species to support habitat corridor along Greenway in consultation with Council's Greenway coordinator
- 10 Establish new street trees
- 11 Strengthen pedestrian connection to Railway underpass
- 12 Enhance safety along Lords Road and create a more pedestrian friendly connection between Kegworth Public School and the railway underpass

## LEGEND



EXISTING TREES  
TO BE RETAINED



PROPOSED TREES



SHARED PEDESTRIAN  
VEHICULAR ZONE



SECONDARY  
CONNECTIONS



IMPROVED STREET  
CONNECTION



EXISTING RAILWAY UNDERPASS IS AN IMPORTANT CONNECTION NODE AND CAN BE ENHANCED WITH LANDSCAPE TREATMENTS



EXISTING DEGRADED VEGETATION ADJOINING TO RAILWAY TRACK WILL BE REVEGETATED USING NATIVE SPECIES SUPPORTING GREENWAY CORRIDOR



EXISTING BRUSH BOXES WILL BE REATAINED WHERE POSSIBLE AND THEIR CONDITIONS WILL BE IMPROVED DUE TO THEIR LOCATION IN FRONT GARDENS



RESIDENTIAL GARDENS AND COURTYARDS WILL FACE DAVIES LANE



NEW STREET TREES WILL BE INCORPORATED INTO LORDS ROAD NATURE STRIPS. EASTERN SIDE OF LORDS ROAD FOOTPATH MAY BE WIDENED TO ACCOMMODATE FOR PEDESTRIAN TRAFFIC TO AND FROM KENWORTH PUBLIC SCHOOL

## LANDSCAPE PRINCIPLES

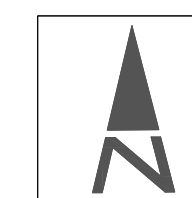
67 - 75 LORDS ROAD, LEICHHARDT

LANDSCAPE MASTER PLAN

PLANNING PROPOSAL

SK 01 issue C

September 2018



ARCHITECT

Stewart Hollenstein + MATTHEW PULLINGER ARCHITECT

CLIENT

PLATINO  
PROPERTIES

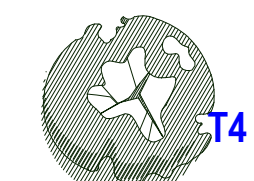


**Umbaco**  
LANDSCAPE ARCHITECTS  
Suite 104, 283 Alfred Street  
North Sydney NSW 2060  
T 02 9955 6772  
www.umbaco.com.au



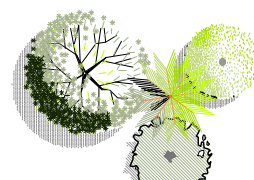


- # LEGEND
- 1 A welcoming entry piazza with feature trees and site specific sculptural elements reflecting site context
  - 2 A tree lined shared vehicular - pedestrian zone with feature paving
  - 3 Attractive secondary site access offering sunken courtyard seating area with pergola over. Potential re-use of recycled timber material from site
  - 4 A generous open space allowing for large public gathering with terraced seating around. The lawns could potentially be used as a site detention basin.
  - 5 A separate secluded space that could be used for small gatherings, lunches and a rest place including a small shelter. Feature recycled brick paving can be used here, reflecting site's history.
  - 6 Seating terraces with access stairs.
  - 7 Timber deck with opportunity to lounge and overlook the wide lawns
  - 8 Walkway through landscaped corridors with attractive lighting and additional seating through to public pedestrian link.
  - 9 Vehicular exit
  - 10 Vehicular entry with pergola allowing for climbers to soften driveway walls and balustrading.
  - 11 Lords Road footpath widened, new street trees added to road verge to facilitate safe, easy access toward Kegworth Public School
  - 12 New street trees
  - 13 Upgraded connection to Railway underpass including new pedestrian crossing
  - 14 Future possible pathway
  - 15 Railway corridor to be rehabilitated with native vegetation




T4

EXISTING TREES TO BE RETAINED AND PROTECTED



PROPOSED TREES

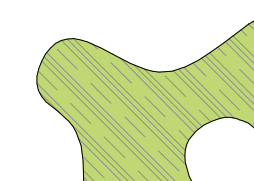


8.23

RL 7.55

EXISTING LEVELS

PROPOSED LEVELS



REHABILITATED NATIVE VEGETATION

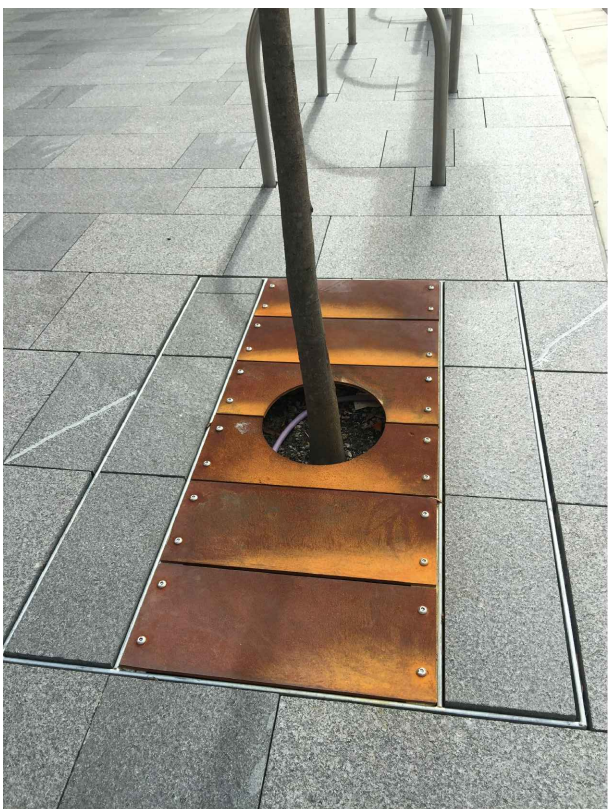




**SECTION A** 1 : 100 @ A1 1 : 200 @ A3



A generous open space with terraced seating around and opportunity for large public gathering ( Clemton Park Village)



Street furniture and public elements with industrial feel will be designed



Pavings will delineate pedestrian and vehicular traffic and provide functional framework to elements



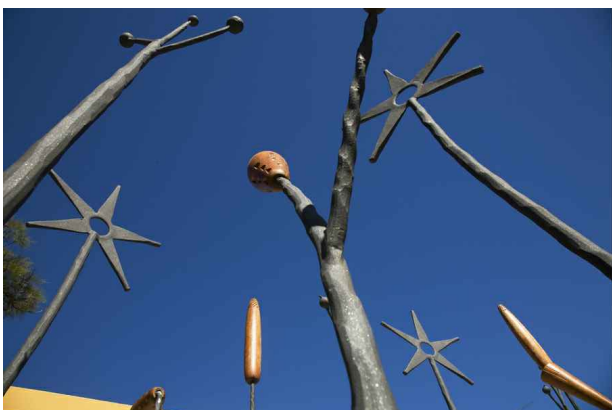
Timber deck will be located in upper corner of piazza



A formal entry piazza will feature trees such as Olives or Lemon trees



A feature shelter with seating in a secluded northern corner of public open space



Public art installation will reflect site's history (Artworks by Jane Cavanough) Local artists could be commissioned to deliver art works.

# INTERNAL PUBLIC SPACE

67 - 75 LORDS ROAD, LEICHHARDT

LANDSCAPE MASTER PLAN

PLANNING PROPOSAL  
SK 03 issue F September 2018

ARCHITECT

Stewart Hollenstein + MATTHEW PULLINGER ARCHITECT

CLIENT

PLATINO PROPERTIES

Umbaco LANDSCAPE ARCHITECTS  
Suite 104, 283 Alfred Street  
North Sydney NSW 2060  
T 02 9955 6772  
www.umbaco.com.au





**SECTION B**    1 : 50 @ A1    1 : 100 @ A3



Public art and landscape features could reflect site history



Paving in courtyards could be recycled



Shade loving plants will be thriving in sheltered corridors flanking the stairs



Native ferns will be used



Existing timber trusses could be re-used for landscape construction in public space



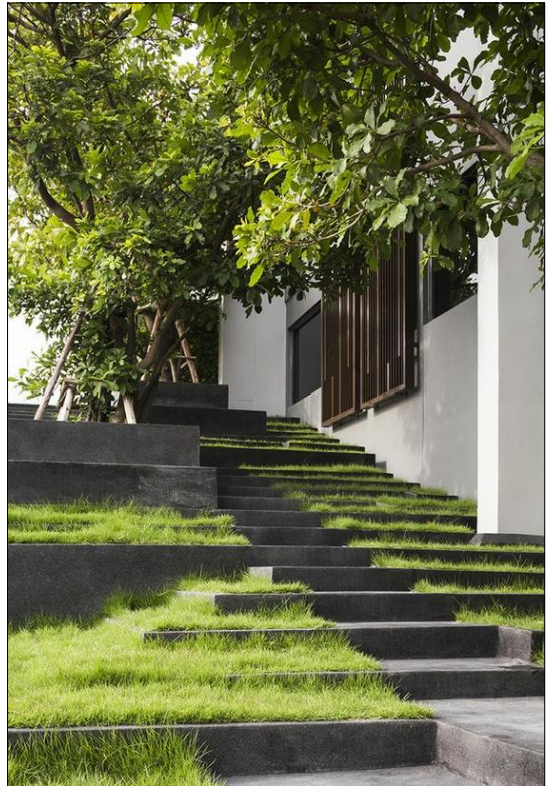
Courtyard like atmosphere can be created in transitional corridors using feature lighting and seating



Climbers could be used to cover walls



Wisteria will have a cooling effect trailed over pergola



Steps will be landscaped

**STREET CONNECTIONS**  
67 - 75 LORDS ROAD, LEICHHARDT

LANDSCAPE MASTER PLAN

PLANNING PROPOSAL  
SK 04 issue F    September 2018

ARCHITECT

Stewart Hollenstein + MATTHEW PULLINGER ARCHITECT

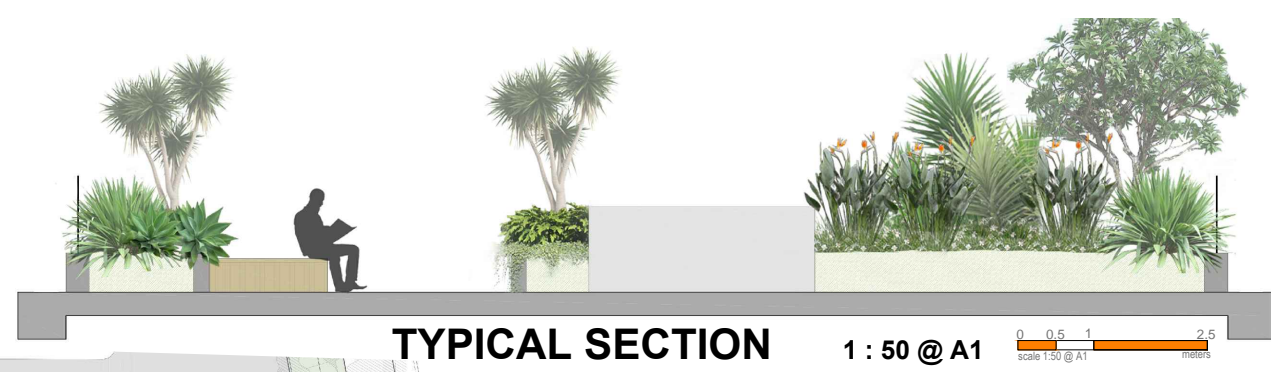
CLIENT

PLATINO PROPERTIES



**Umbaco**  
LANDSCAPE ARCHITECTS  
Suite 104, 283 Alfred Street  
North Sydney NSW 2060  
T 02 9955 6772  
www.umbaco.com.au





**COMMUNAL GARDENS**  
Vegetable gardens could also be included on roof tops, providing fresh produce for the residents. Select fruit trees, herbs and culinary plants could be grown.



Low water demand and sun tolerant species

**ROOF TOP GARDENS**  
Roof gardens will provide secluded spaces / rooms where separate parties can enjoy recreation. Each roof top area will have a comfortable seating and lounging areas, BBQs may also be included.  
Plant material is a selection of durable, reliable and sun and wind tolerant species. Refer SK06 for more details.  
Areas of roof for gardens will be shared with PV energy panels.

# ROOF TOP GARDENS

67 - 75 LORDS ROAD, LEICHHARDT

LANDSCAPE MASTER PLAN

PLANNING PROPOSAL  
SK 05 issue F September 2018



ARCHITECT  
**Stewart Hollenstein + MATTHEW PULLINGER ARCHITECT**

CLIENT  
**PLATINO PROPERTIES**

**Umbaco**  
LANDSCAPE ARCHITECTS  
Suite 104, 283 Alfred Street  
North Sydney NSW 2060  
T 02 9955 6772  
www.umbaco.com.au