

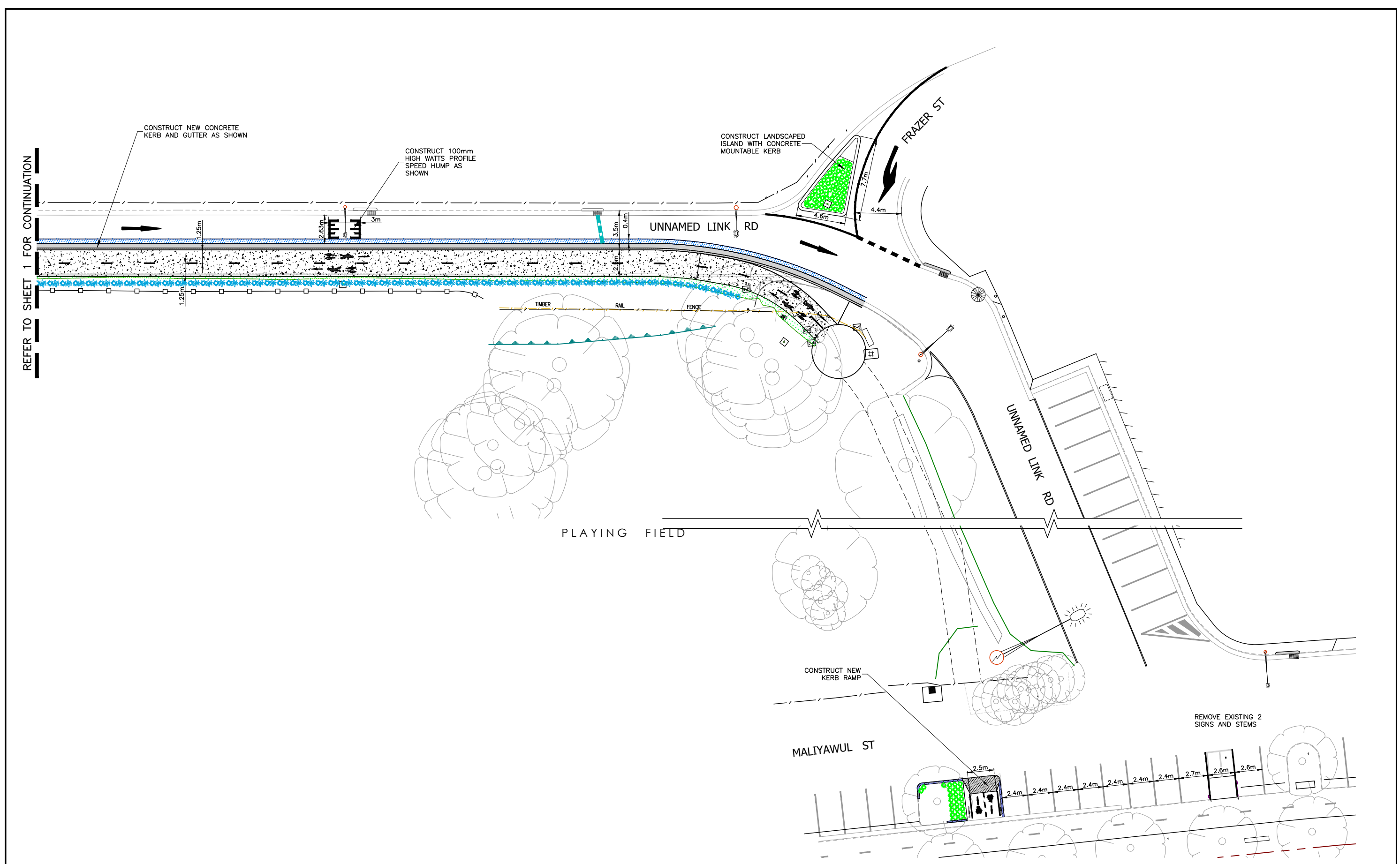


REFER TO SHEET 2 FOR CONTINUATION

1 GENERAL ARRANGEMENT PLAN (1 of 2)  
NTS



NOTIFICATION PLAN

CHECKED & APPROVED	SURVEYED BY ADAM DILLON 07-07-22		2-14 FISHER STREET, PETERSHAM NSW 2049 Ph: 02 9392 5000 PO Box 14 PETERSHAM council@innerwest.nsw.gov.au Web: https://www.innerwest.nsw.gov.au		SURV. GEN.	COORDINATE SYSTEM	UN-NAMED LINK ROAD, LILYFIELD MARY STREET TO FRAZER STREET PROPOSED SHARED BIKE PATH GENERAL ARRANGEMENT PLAN (1 of 2)	PROJECT NO.	SHEET NO.
	APPROVED FOR CONSTRUCTION				DESIGNED BY ASHFAQ AHMAD 14-07-22	R.M.S. A.G.L. / SHELL PIPELINES SYDNEY WATER TELSTRA / OPTUS AUSGRID NOTICE OF ENTRY KERB & GUTTER NOTICES DATE		ASSUMED	SCALES (ORIGINAL A1) NTS



2 GENERAL ARRANGEMENT PLAN (2 OF 2)  
NTS

NOTIFICATION PLAN

CHECKED & APPROVED	SURVEYED BY ADAM DILLON 07-07-22	 <p>2-14 FISHER STREET, PETERSHAM NSW 2049 Ph: 02 9392 5000 Post: PO Box 14 PETERSHAM council@innerwest.nsw.gov.au Web: https://www.innerwest.nsw.gov.au</p>		SURV. GEN.	COORDINATE SYSTEM	UN-NAMED LINK ROAD, LILYFIELD				PROJECT NO.	SHEET NO.
APPROVED FOR CONSTRUCTION	DESIGNED BY ASHFAQ AHMAD 14-07-22			R.M.S.	ASSUMED	MARY STREET TO FRAZER STREET				303099	2 of 2
	DRAWN BY ASHFAQ AHMAD 14-07-22			A.G.L. / SHELL PIPELINES	NTS	PROPOSED SHARED BIKE PATH				PLAN NO. 10216	
				SYDNEY WATER	NTS	GENERAL ARRANGEMENT PLAN (2 of 2)				SHEET REV #	
				TELSTRA / OPTUS							
				AUSGRID							
				NOTICE OF ENTRY							
				KERB & GUTTER							
				NOTICES	DATE	REV.	DATE	DESCRIPTION	APPROV.		