

**LEGEND**

NEW CAR PARKING SPACE

EXISTING CAR PARKING SPACE

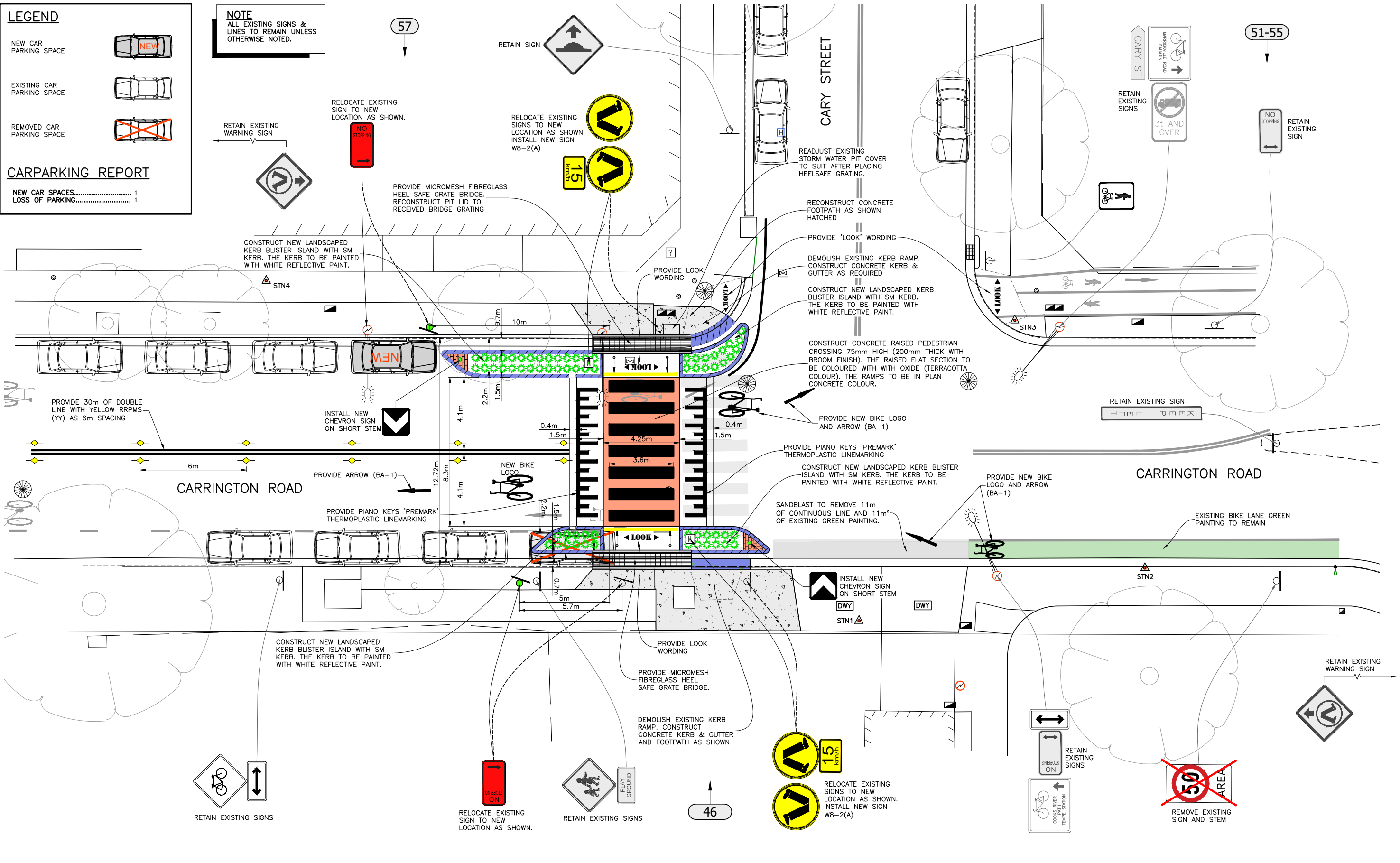
REMOVED CAR PARKING SPACE

**CARPARKING REPORT**

NEW CAR SPACES..... 1

LOSS OF PARKING..... 1

**NOTE**  
ALL EXISTING SIGNS & LINES TO REMAIN UNLESS OTHERWISE NOTED.



**1 GENERAL ARRANGEMENTS**  
Scale: 1:100

SCALE 1:100 (A1)  
SCALE 1:200 (A3)

COMMUNITY CONSULTATION

CHECKED & APPROVED SURVEYED BY ADAM DILLON 09-05-2023 DESIGNED BY ASHFAQ AHMAD 29-05-2023 DRAWN BY ASHFAQ AHMAD 29-05-2023	<p><b>INNER WEST</b></p> <p>2-14 FISHER STREET, PETERSHAM NSW 2049          Ph. 02 9392 5000          Post: PO Box 14 PETERSHAM          council@innerwest.nsw.gov.au          Web: https://www.innerwest.nsw.gov.au</p>	SURV. GEN. R.M.S. A.G.L. / SHELL PIPELINES SYDNEY WATER TELSTRA / OPTUS AUSGRID NOTICE OF ENTRY KERB & GUTTER NOTICES DATE	COORDINATE SYSTEM ASSUMED SCALES (ORIGINAL A1) 1:100 REV. DATE DESCRIPTION APPROV.	CARRINGTON ROAD, MARRICKVILLE AT CARY STREET INTERSECTION PROPOSED RAISED PEDESTRIAN CROSSING GENERAL ARRANGEMENTS		PROJECT NO. 303082	SHEET NO. 1 of 1
				PLAN NO. 10249		SHEET REV #	