



# **INNER WEST COUNCIL**

**WestConnex and Western Harbour  
Tunnel public meeting**

**Saturday 26 May 2018 2:00pm  
Balmain Town Hall**

**#HandsOffInnerWest**



# **INNER WEST COUNCIL**

**David Birds  
Group Manager Strategic Planning  
Inner West Council**

## State Government Major Infrastructure Projects



### Council's position:

- **Opposition to inner-Sydney motorways**
- **Public transport solutions**
- **Opposition to Tigers site as a construction dive-site for Western Harbour Tunnel**
- **Opposition to over-use of White Bay**
- **Cumulative and long-term impacts of infrastructure frenzy: noise, traffic and air quality**

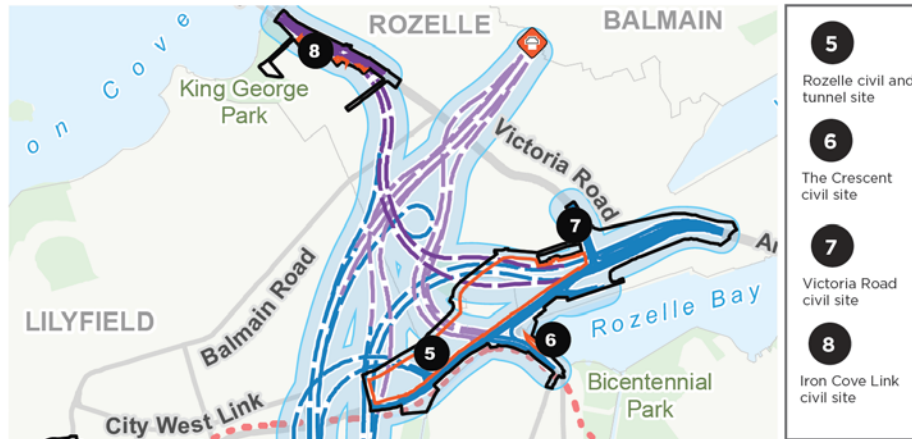
## WestConnex Stages 1, 2 & 3



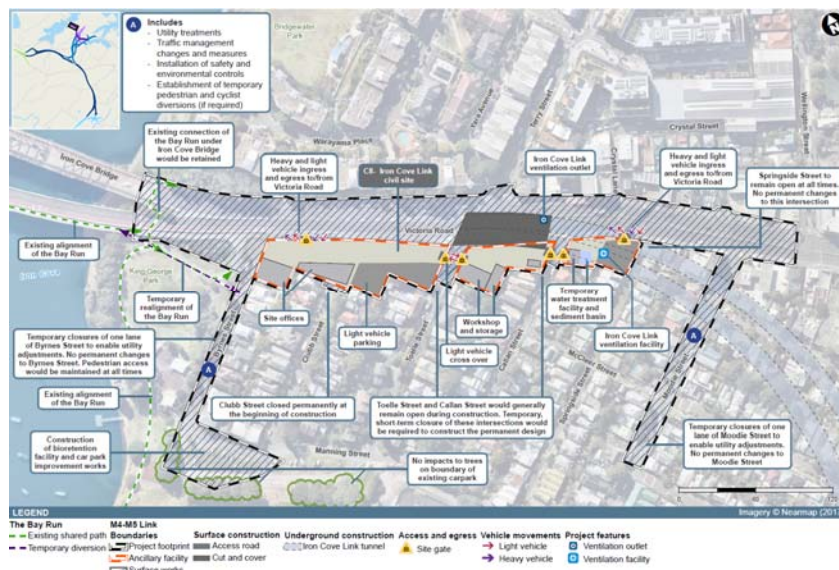
## WestConnex Stage 3

- Approved 17 April 2018
- Council keen to ensure that the unacceptable construction impacts from Stages 1 and 2 are not repeated for Stage 3
- Council's main local concerns with Stage 3: construction and operational impacts, compulsory acquisitions and potential for cracking of buildings
- Stage 3 creates multiple construction sites across the Inner West, including a truck marshalling and employee parking area at White Bay

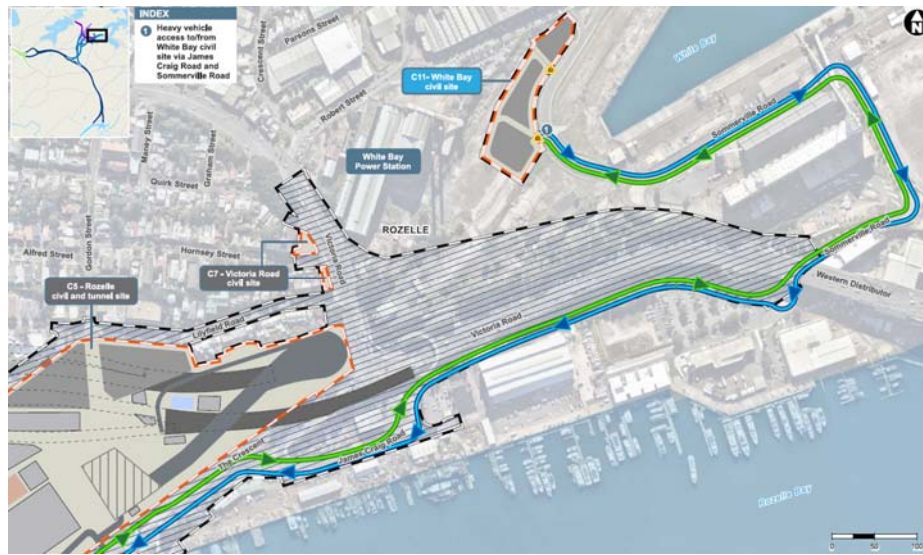
## WestConnex - Rozelle construction sites



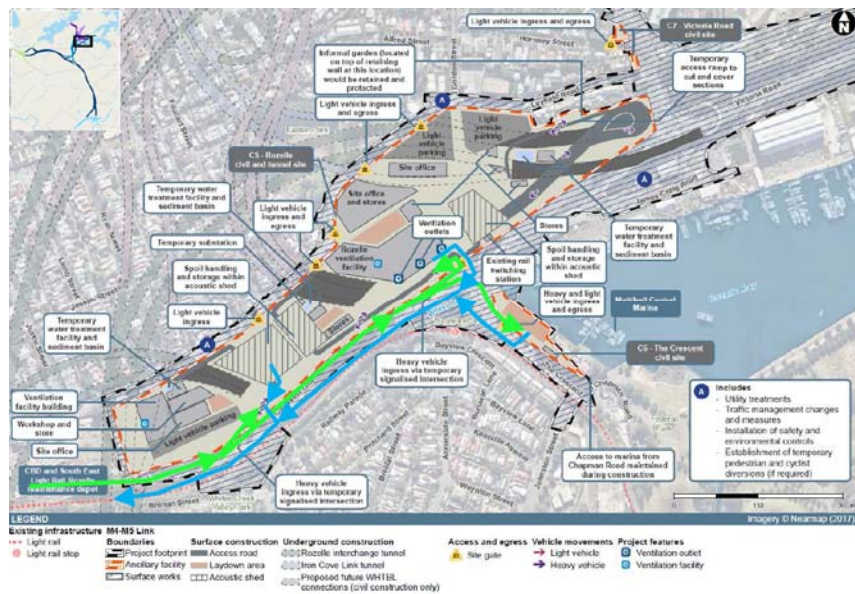
## WestConnex construction site at Iron Cove



## WestConnex White Bay truck stabling area and trucking route



## WestConnex construction sites at Rozelle, The Crescent & Victoria Road

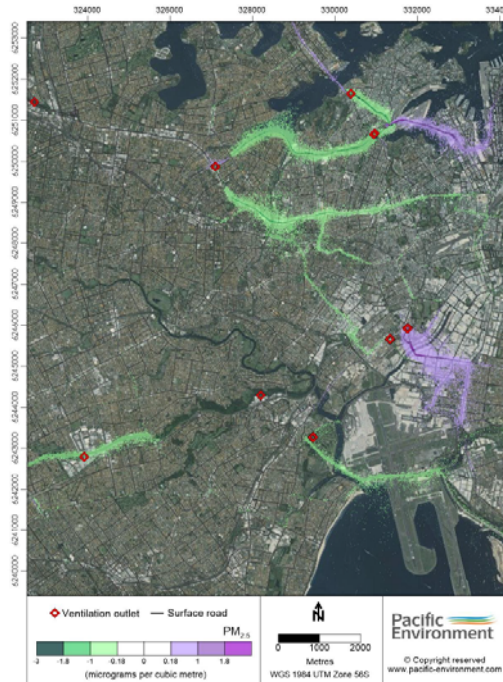


**WestConnex operational traffic: air quality**

Pollution at the surface and at vent stacks

**Stage 3 stacks in Council area:**

- \* Rozelle Rail Yards (3)
- \* Victoria Road (1)
- \* Haberfield (3)
- \* St Peters (2)



**WestConnex - three 35m tall vent stacks, Rozelle Rail Yards**



**WestConnex - one 20m tall vent stack, Victoria Road, Rozelle**



## Western Harbour Tunnel

Concept Design  
expected July 2018

Environmental Impact  
Statement (EIS)  
expected later in 2018

### Main local issues:

- Dive-site at former Balmain Leagues Club site
- Construction site at Rozelle Rail Yards
- Harbour foreshore activities
- Harbour dredging & laying tunnel sections



## State Government Major Infrastructure Projects



### Glebe Island / White Bay



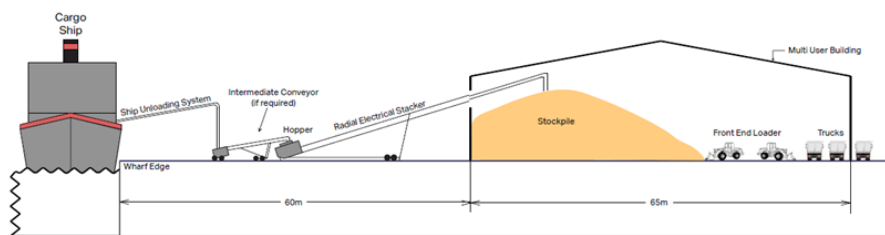
### Glebe Island Multi-user Port Facility and Concrete Batching Plant



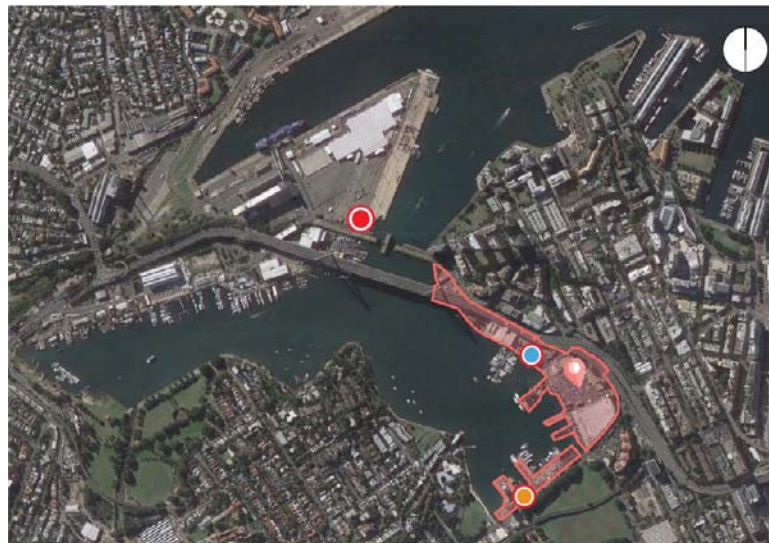


## Multi-user Port Facility - Activities & Issues

- Ship off-loading, storage and dispatch of sand, aggregate and other dry bulk construction materials
- Operating 24/7
- Delivery by water, dispatch by road
- Issues – noise, dust, light spill & traffic



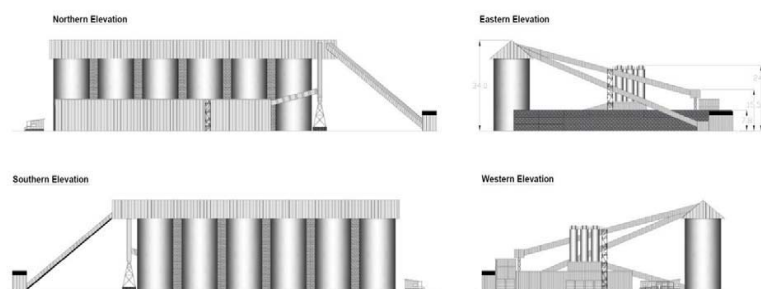
## Concrete Batching Plant



● The Site   
 ● Hanson Blackwattle Bay Aggregate Facility   
 ● Hymix Concrete Facility

## Concrete Batching Plant Activities

- Relocation of existing facilities at Blackwattle Bay and Pyrmont to Glebe Island
- Operating up to 24/7, producing up to 1 million cubic metres of concrete a year
- Site would include: aggregate storage silos, handling facility, enclosed concrete batching facility, site office building, ancillary infrastructure & parking



## Cumulative Impacts at White Bay

- Council believes the proposals represent over-use of White Bay
- Council is concerned about noise, dust, lighting and traffic impacts on surrounding residents from all proposed uses at White Bay
- White Bay impacts are in addition to significant impacts from multiple WestConnex and Western Harbour Tunnel construction sites
- Potential Western Harbour Tunnel construction site

### **Cumulative Traffic Impacts**

- Multi-user facility - approx. 1200 trucks movements/day
- Concrete batching works – approx. 2000 trucks movements/day
- M4-M5 Link - approx. 280 trucks movements/day
- Western Harbour Tunnel - approx. 130 trucks movements/day
- Total Truck Movements– over 3500 trucks movements/day

### **Council's Position**

- Council opposes these projects and if they proceed will continue to seek to minimise impacts and obtain the best outcomes possible
- Council provides information and assistance – available from strategic planning staff, including the WestConnex Unit [westconnex@innerwest.nsw.gov.au](mailto:westconnex@innerwest.nsw.gov.au)
- Council is in constant communication with the community and State agency reps to improve outcomes
- Department of Planning compliance officers operate from Council part-time
- Further information is available on Council's website



# INNER WEST COUNCIL

## #HandsOffInnerWest

### **Phone Premier Gladys Berejiklian P: 8574 5000 and ask**

- **Why isn't the State Government filtering emissions from ventilation stacks with outputs on a level with many residents?**
- Why is the State Government wasting money on WestConnex rather than a globally recognised 21st Century solution like public transport?
- **Why can't the Premier, Planning Minister and Education Minister stand up for Rozelle kids the way they stood up for kids in their own electorates?**
- How can the State Government consider a massive open mine site so close to a school with nearly 1000 children?
- **How will noise and vibration from excavation affect or impact our children's chances of being able to learn for the next five years of construction?**
- What protections has the Government got in place to protect Rozelle Public School students from the clouds of dust and spoil they'll be digging up?
- **How will construction traffic navigate narrow Rozelle residential streets?**
- How will 24/7 non-stop drilling and construction affect not only the value of Rozelle homes, but their structure and safety?
- **Inner West Council has investigated urgently needed traffic calming for local streets – will the State Government fund them?**