

GENERAL LEGEND

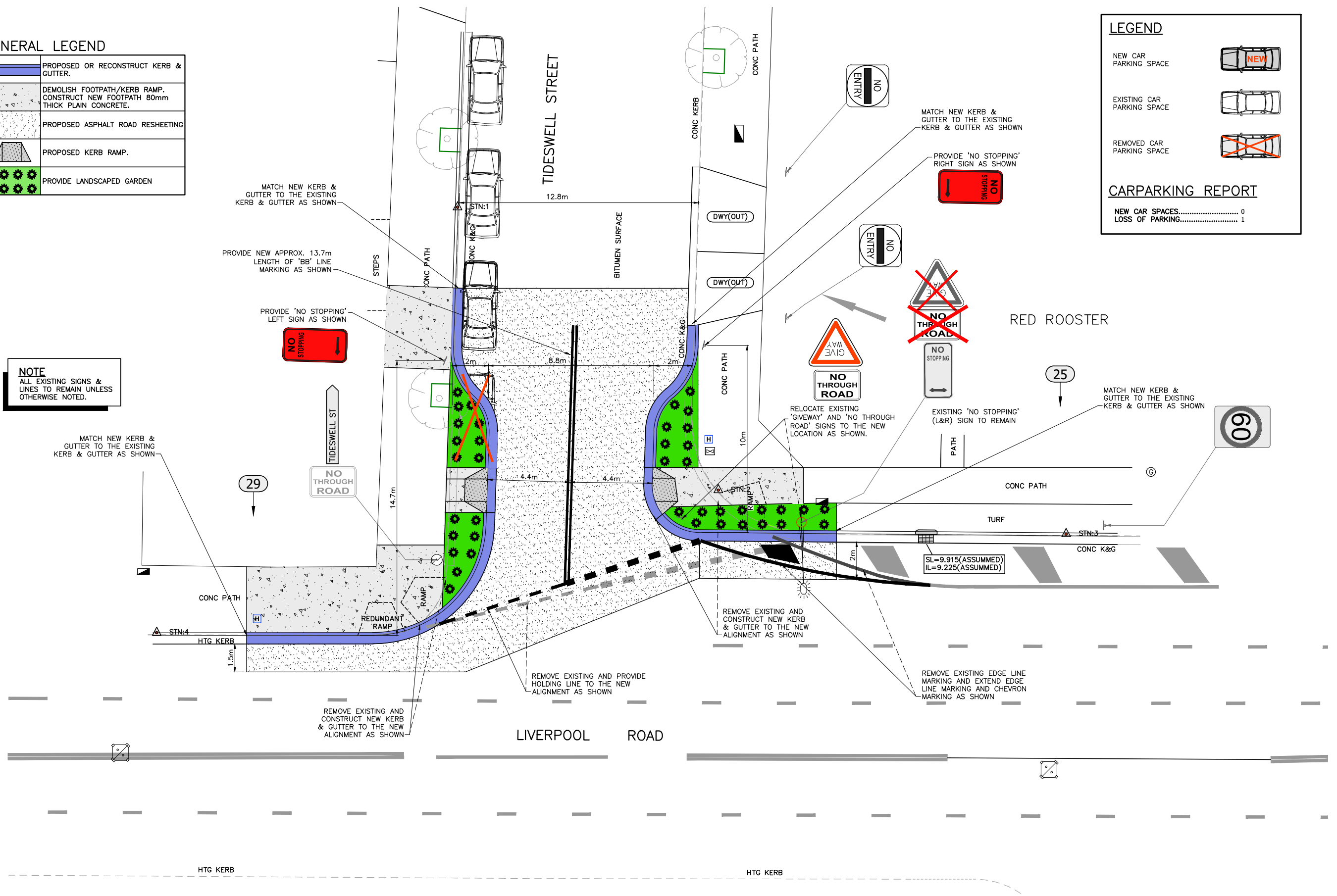
	PROPOSED OR RECONSTRUCT KERB & GUTTER.
	DEMOLISH FOOTPATH/KERB RAMP. CONSTRUCT NEW FOOTPATH 80mm THICK PLAIN CONCRETE.
	PROPOSED ASPHALT ROAD RESHEETING
	PROPOSED KERB RAMP.
	PROVIDE LANDSCAPED GARDEN

LEGEND

NEW CAR PARKING SPACE	
EXISTING CAR PARKING SPACE	
REMOVED CAR PARKING SPACE	

CARPARKING REPORT

NEW CAR SPACES..... 0
 LOSS OF PARKING..... 1



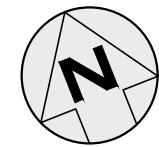
NOTE
 ALL EXISTING SIGNS & LINES TO REMAIN UNLESS OTHERWISE NOTED.

\\nc-flo01\innerwest.nsw.gov.au\asset and Environment\GIS\CD\24\51197\303082-ASH-Tideswell\0303082-ASH-Tideswell\0303082-10254-Plan.dwg

CHECKED & APPROVED	SURVEYED BY ADAM DILLON 23-6-23
APPROVED FOR CONSTRUCTION	DESIGNED BY RANJI 06-12-23
	DRAWN BY RANJI 06-12-23

INNER WEST

2-14 FISHER STREET, PETERSHAM NSW 2049
 Ph. 02) 9392 5000
 Post: PO Box 14 PETERSHAM
 e) council@innerwest.nsw.gov.au
 Web: https://www.innerwest.nsw.gov.au



SURV. GEN.	
R.M.S.	
A.G.L. / SHELL PIPELINES	
SYDNEY WATER	
TELSTRA / OPTUS	
AUSGRD	
NOTICE OF ENTRY	
KERB & GUTTER	
NOTICES	DATE

COORDINATE SYSTEM	ASSUMED
SCALES (ORIGINAL A1)	
	1:100

REV.	DATE	DESCRIPTION	APPROV.

TIDESWELL STREET, ASHFIELD
 AT LIVERPOOL ROAD INTERSECTION
 PROPOSED KERB EXTENSIONS
 COMMUNITY CONSULTATION

CONSULTATION	
PROJECT NO. 303082	SHEET NO. 1 of 1
PLAN NO. 10254	
SHEET REV #	