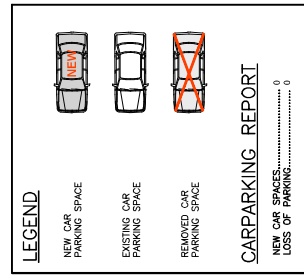
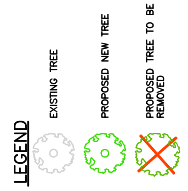
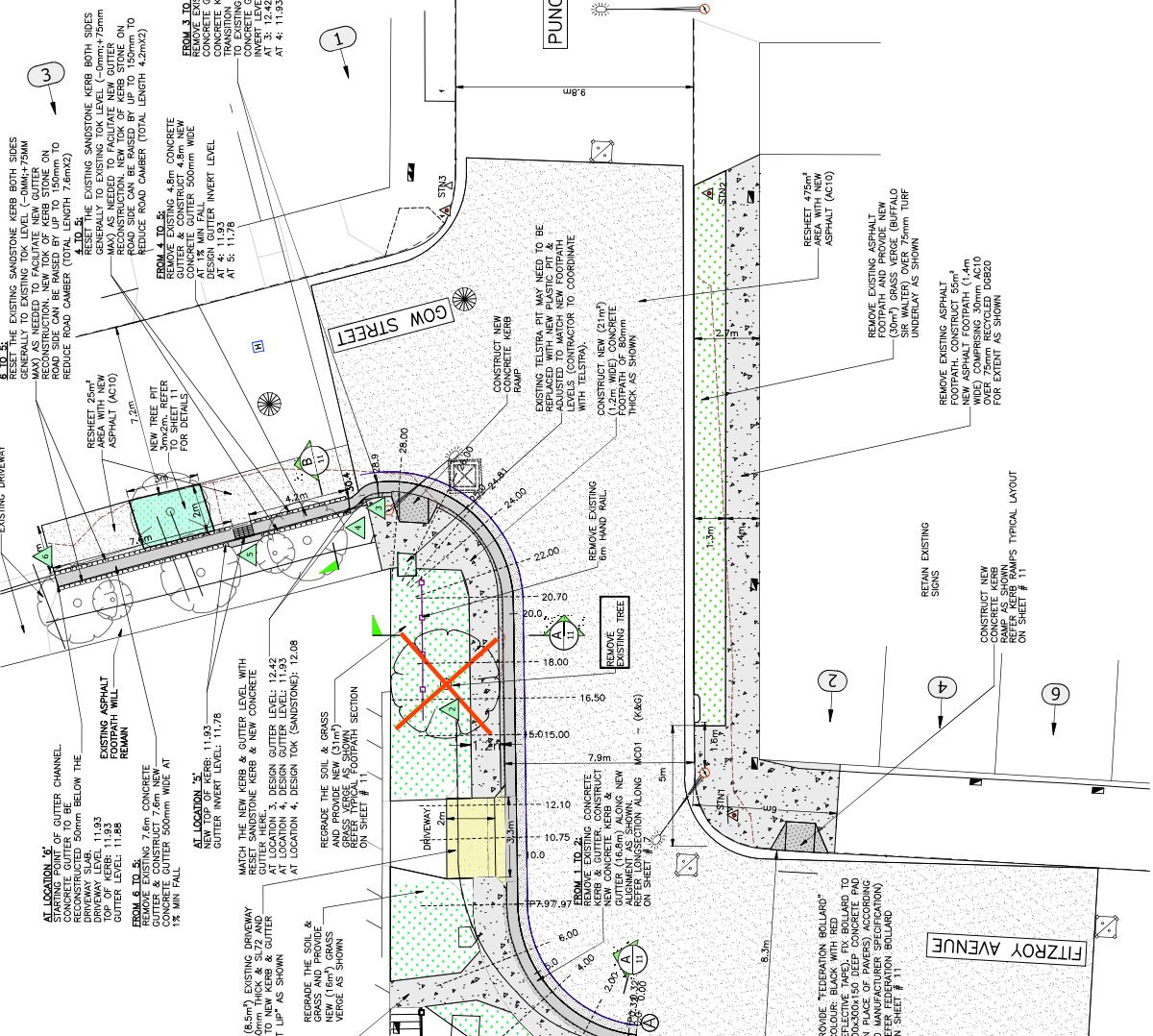


K&G / GUTTER / KERB	CONSTRUCTION/RESET SCHEDULE	LENGTH (m)
▲ to ▲	REMOVE EXISTING CONCRETE KERB & GUTTER. CONSTRUCT NEW CONCRETE KERB & GUTTER. (1.2m) 150mm HIGH ALONG NEW ALIGNMENT.	16.5
▲ to ▲	CONSTRUCT NEW CONCRETE KERB & GUTTER. 150mm HIGH ALONG THE ALIGNMENT SHOWN.	12.4
▲ to ▲	TRANSITION LENGTH. REMOVE EXISTING SANDSTONE KERB & GUTTER. CONSTRUCT NEW CONCRETE KERB & GUTTER. 150mm HIGH.	1.5
▲ to ▲	CONSTRUCT 500mm WIDE CONCRETE GUTTER WITH 1% MINIMUM SLOPE TO RESET SANDSTONE KERB WITH THE LEVEL SHOWN.	4.2
▲ to ▲	CONSTRUCT 500mm WIDE CONCRETE GUTTER WITH 1% MINIMUM SLOPE TO RESET SANDSTONE KERB WITH THE LEVEL SHOWN.	7.6



CARPARKING REPORT
 NEW CAR SPACES 0
 LOSS OF PARKING 0

GENERAL LEGEND

[Pattern]	PROPOSED KERB/KERB & GUTTER. REFER STANDARD DRAWING R1
[Pattern]	PROPOSED FOOTPATH 80mm THICK PLAIN CONCRETE. REFER STANDARD DRAWING F1
[Pattern]	PROPOSED 150mm DEEP VERTICAL CROSSING (VC). REFER STANDARD DRAWING VS & V4
[Pattern]	PROPOSED KERB RAMP. REFER STANDARD DRAWING F4
[Pattern]	PROPOSED TOPSOIL & TURF (BUFFALO SIR WALTER)
[Pattern]	PROPOSED ASPHALT ROAD RESHEETING
[Pattern]	PROPOSED ASPHALT ROAD HEAVY PATCHING
[Pattern]	PROPOSED RMS PEDESTRIAN FENCE - TYPE 1 (REFER TO TNSW ROBO DRAWINGS)
[Pattern]	DENOTES NEW TREE PIT OF HARDWOOD TIMBER EDGE 80mm DEEP x 45mm WIDTH FLUSH AT BOTTOM WITH 100mm DEEP PLASTIC SURROUND COVER (6 OFF) & FOREST FINES MULCH (75mm THICK)

INNER WEST
 2-14 FITZROY STREET, FITZROHAM NSW 2046
 P: 02 9392 4000
 F: 02 9392 4001
 Email: info@innerwest.com.au
 Web: https://www.innerwest.com.au

GENERAL ARRANGEMENT PLAN
 SCALE: 1:100

FOR CONSTRUCTION

PROJECT NO. 3031114
 SHEET NO. 4 of 15
 PLAN NO. 10224-A
 SHEET REV # A

GOW STREET, BIRCHGROVE
AT FITZROY AVENUE & PUNCH STREET
KERB EXTENSION & FOOTPATH CONSTRUCTION
GENERAL ARRANGEMENT PLAN

REV.	DATE	DESCRIPTION	DESIGNED BY	CHECKED BY	APPROVED BY
A	11/08/2020	FINAL DESIGN	JALIA UDON	JALIA UDON	JALIA UDON

COORDINATE SYSTEM: GDA2020
 SCALES (ORIGINAL): 1:100
 DATE: 11/08/2020