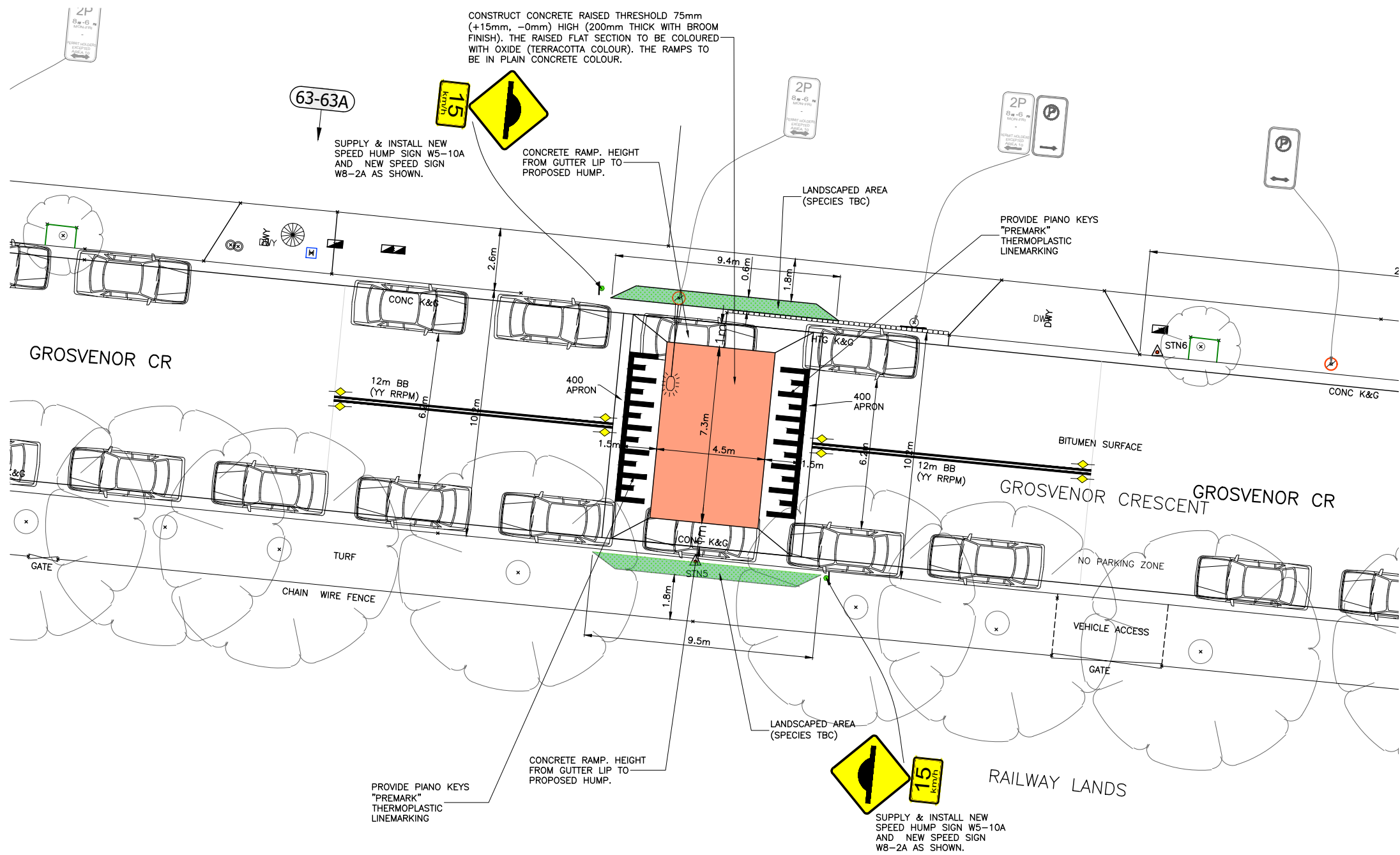


\\nc-ftp01.innerwest.nsw.gov.au\ncs\Assets and Environment\GIS\CS\24\51197\301485-SUM-GrosvenorSt-RaisedThresholds-Consultation\301485-10267-Plans.dwg



**RAISED THRESHOLD AT HOUSE # 62**  
SCALE 1:100

**LEGEND**

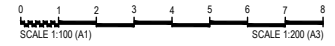
- NEW CAR PARKING SPACE
- EXISTING CAR PARKING SPACE
- REMOVED CAR PARKING SPACE

**CARPARKING REPORT**

NEW CAR SPACES..... 0

LOSS OF PARKING..... 0

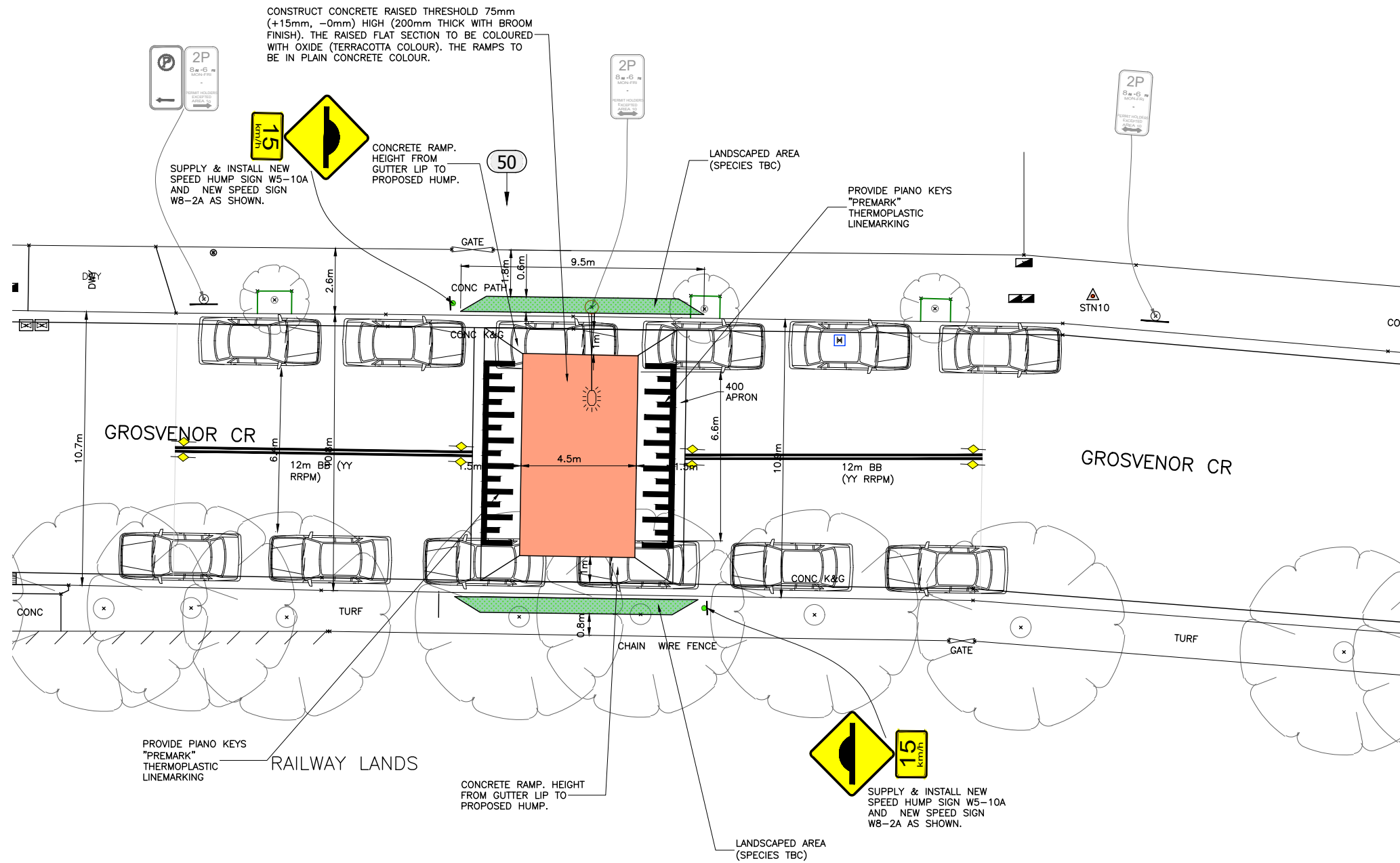
**NOTE**  
ALL EXISTING SIGNS AND LINES WILL REMAIN UNLESS OTHERWISE NOTED



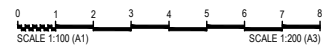
FOR TRAFFIC COMMITTEE

CHECKED & APPROVED	SURVEYED BY ADAM DILLON 26-10-23	 <b>INNER WEST</b> 2-14 FISHER STREET, PETERSHAM NSW 2049 Ph: 02 9392 5000 Post: PO Box 14 PETERSHAM council@innerwest.nsw.gov.au Web: https://www.innerwest.nsw.gov.au		SURV. GEN. R.M.S. A.G.L. / SHELL PIPELINES SYDNEY WATER TELSTRA / OPTUS AUSGRD NOTICE OF ENTRY KERB & GUTTER NOTICES DATE	COORDINATE SYSTEM GDA2020 SCALES (ORIGINAL A1)  1:100	<b>GROSVENOR CRESCENT, SUMMER HILL</b> SLOANE STREET TO LIVERPOOL ROAD PROPOSED - RAISED THRESHOLDS CONSULTATION PLAN (1 of 3)	PROJECT NO. 301485	SHEET NO. 1 of 3
APPROVED FOR CONSTRUCTION	DESIGNED BY JALAL UDDIN 05-01-2024		<b>10267</b>					PLAN NO.
	DRAWN BY JALAL UDDIN 05-01-2024							SHEET REV #

\\vec-fil001\innerwest.nsw.gov.au\assets and Environment\GIS\CD\24\51197\301485-SUM-GrosvenorSt-301485-10267-Plans.dwg



RAISED THRESHOLD AT HOUSE # 50  
SCALE 1:100



**LEGEND**

- NEW CAR PARKING SPACE
- EXISTING CAR PARKING SPACE
- REMOVED CAR PARKING SPACE

**CARPARKING REPORT**

NEW CAR SPACES..... 0  
LOSS OF PARKING..... 0

**NOTE**  
ALL EXISTING SIGNS AND LINES WILL REMAIN UNLESS OTHERWISE NOTED

FOR TRAFFIC COMMITTEE

<p>CHECKED &amp; APPROVED</p>	<p>SURVEYED BY ADAM DILLON 26-10-2023</p>			<p>SURV. GEN. R.M.S. A.G.L. / SHELL PIPELINES SYDNEY WATER TELSTRA / OPTUS AUSGRID NOTICE OF ENTRY KERB &amp; GUTTER NOTICES DATE</p>	<p>COORDINATE SYSTEM GDA2020 SCALES (ORIGINAL A1) 1:100</p>	<p><b>GROSVENOR CRESCENT, SUMMER HILL</b> SLOANE STREET TO LIVERPOOL ROAD PROPOSED - RAISED THRESHOLDS CONSULTATION PLAN (2 of 3)</p>	<p>PROJECT NO. 301485</p> <p>PLANNING NO. 10267</p> <p>SHEET REV #</p>	<p>SHEET NO. 2 of 3</p>
-------------------------------	---	--	--	---	---	---	--	-----------------------------

CONSTRUCT CONCRETE RAISED THRESHOLD 75mm (+15mm, -0mm) HIGH (200mm THICK WITH BROOM FINISH). THE RAISED FLAT SECTION TO BE COLOURED WITH OXIDE (TERRACOTTA COLOUR). THE RAMPS TO BE IN PLAIN CONCRETE COLOUR.

SUPPLY & INSTALL NEW SPEED HUMP SIGN W5-10A AND NEW SPEED SIGN W8-2A ON EXISTING POWER POLE.

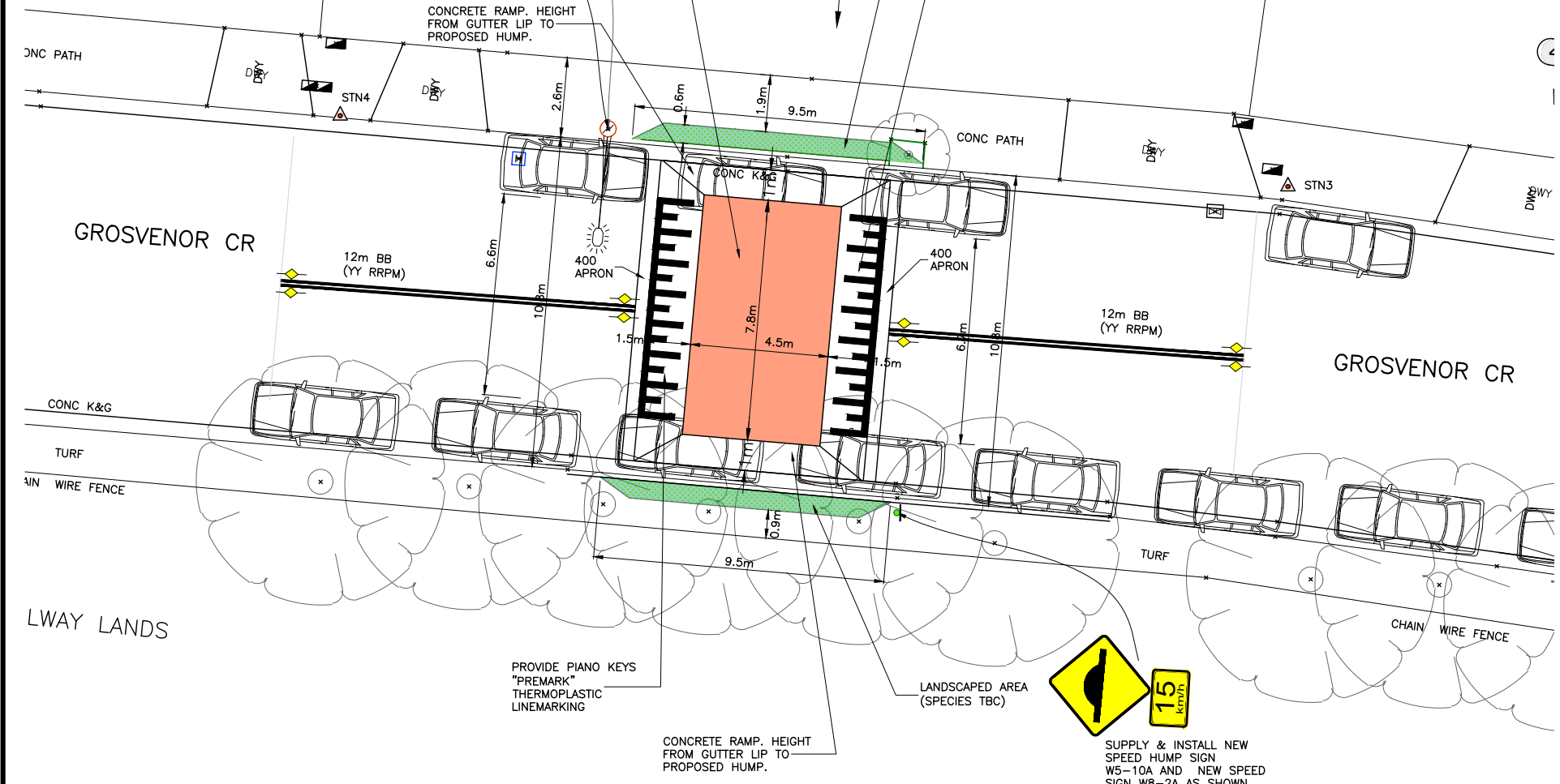


CONCRETE RAMP. HEIGHT FROM GUTTER LIP TO PROPOSED HUMP.

LANDSCAPED AREA (SPECIES TBC)

PROVIDE PIANO KEYS "PREMARK" THERMOPLASTIC LINEMARKING

47



RAISED THRESHOLD AT HOUSE # 47  
SCALE 1:100



SUPPLY & INSTALL NEW SPEED HUMP SIGN W5-10A AND NEW SPEED SIGN W8-2A AS SHOWN.

PROVIDE PIANO KEYS "PREMARK" THERMOPLASTIC LINEMARKING

LANDSCAPED AREA (SPECIES TBC)

CONCRETE RAMP. HEIGHT FROM GUTTER LIP TO PROPOSED HUMP.

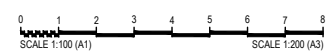
**LEGEND**

- NEW CAR PARKING SPACE
- EXISTING CAR PARKING SPACE
- REMOVED CAR PARKING SPACE

**CARPARKING REPORT**

NEW CAR SPACES..... 0  
LOSS OF PARKING..... 0

**NOTE**  
ALL EXISTING SIGNS AND LINES WILL REMAIN UNLESS OTHERWISE NOTED



FOR TRAFFIC COMMITTEE

CHECKED & APPROVED	SURVEYED BY ADAM DILLON 26-10-2023	<p><b>INNER WEST</b> 2-14 FISHER STREET, PETERSHAM NSW 2049 Ph: 02 9392 5000 Post: PO Box 14 PETERSHAM a) council@innerwest.nsw.gov.au Web: https://www.innerwest.nsw.gov.au</p>		SURV. GEN.	COORDINATE SYSTEM	<p>GROSVENOR CRESCENT, SUMMER HILL</p> <p>SLOANE STREET TO LIVERPOOL ROAD</p> <p>PROPOSED - RAISED THRESHOLDS</p> <p>CONSULTATION PLAN (3 of 3)</p>	PROJECT NO.	SHEET NO.
APPROVED FOR CONSTRUCTION	DESIGNED BY JALAL UDDIN 05-01-2024			R.M.S.	GDA2020		301485	3 of 3
	DRAWN BY JALAL UDDIN 05-01-2024			A.G.L. / SHELL PIPELINES	SYDNEY WATER		PLAN NO.	10267
		TELSTRA / OPTUS	AUSGRID	NOTICE OF ENTRY	1:100	SHEET REV #		
		KERB & GUTTER	NOTICES	DATE	REV.	DATE	DESCRIPTION	APPROV.